

DISCLAIMER:

This unrecorded Record of Survey was donated to the City of Tucson. The City of Tucson provides this data for your personal use "as is." Additionally, the City of Tucson provides this information with the understanding that it is not guaranteed to be accurate, correct or complete and conclusions drawn from such information are the responsibility of the user.

SAHUARA STREET

N.W. CORNER LOT 8

232.64 (M)

24.0

105.08

S 76°34'08" E

102.0

N.W. CORNER LOT 13

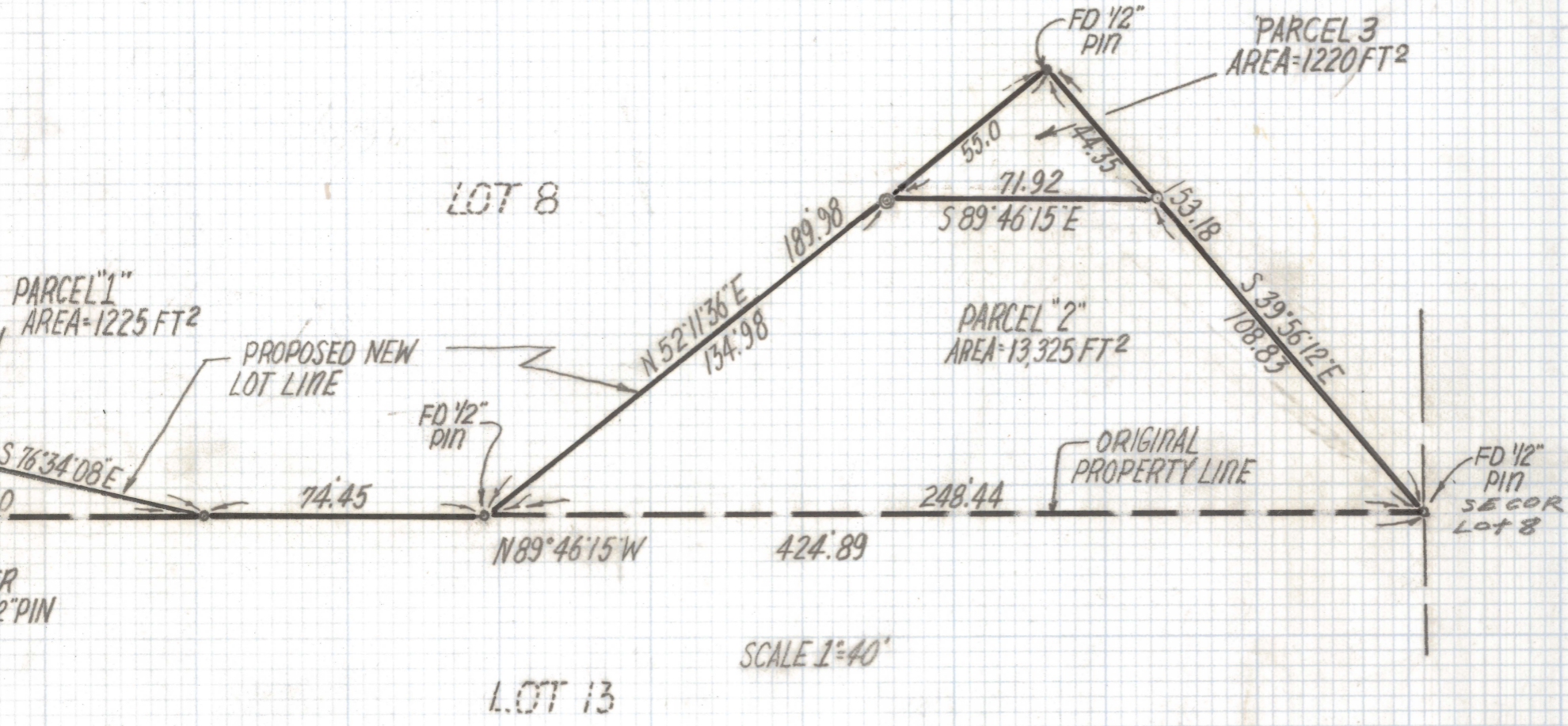
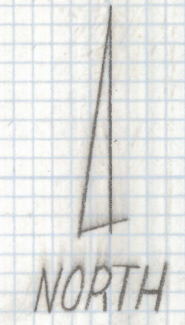
FD 1/2" PIN

N 0°29'13" W *

256.61 (M)

256.50 (R)

S.W. CORNER LOT 13



- NOTES**
- 1) ϕ INDICATES SET 1/2" PIN MKD L.S 25405 UNLESS NO
 - 2) M-MEASURED
 - 3) R-MAP OR DEED RECORD
 - 4) * BASIS OF BEARINGS N 0°29'13" W WEST LINE OF LOT 13 OF INDIAN HOUSE EST PER DOC 9048 AT PAGE 308

SCALE 1"=40'

SKETCH OF LEGAL DESCRIPTIONS

OF A PORTION OF LOT 8 OF INDIAN HOUSE ESTATES AS RECORDED IN BOOK 9 OF MAPS AND PLATS AT 18 IN THE OFFICE OF THE PIMA COUNTY RECORDER, PIMA COUNTY, ARIZONA.



EVERETT M. TRUEBLOOD
 REGISTERED LAND SURVEYOR
 TUCSON, ARIZONA
 JOB# 96-130

12-3-96 REVISED PARCEL 3
 8-26-96 REVISE NORTH LINE PARCEL 2