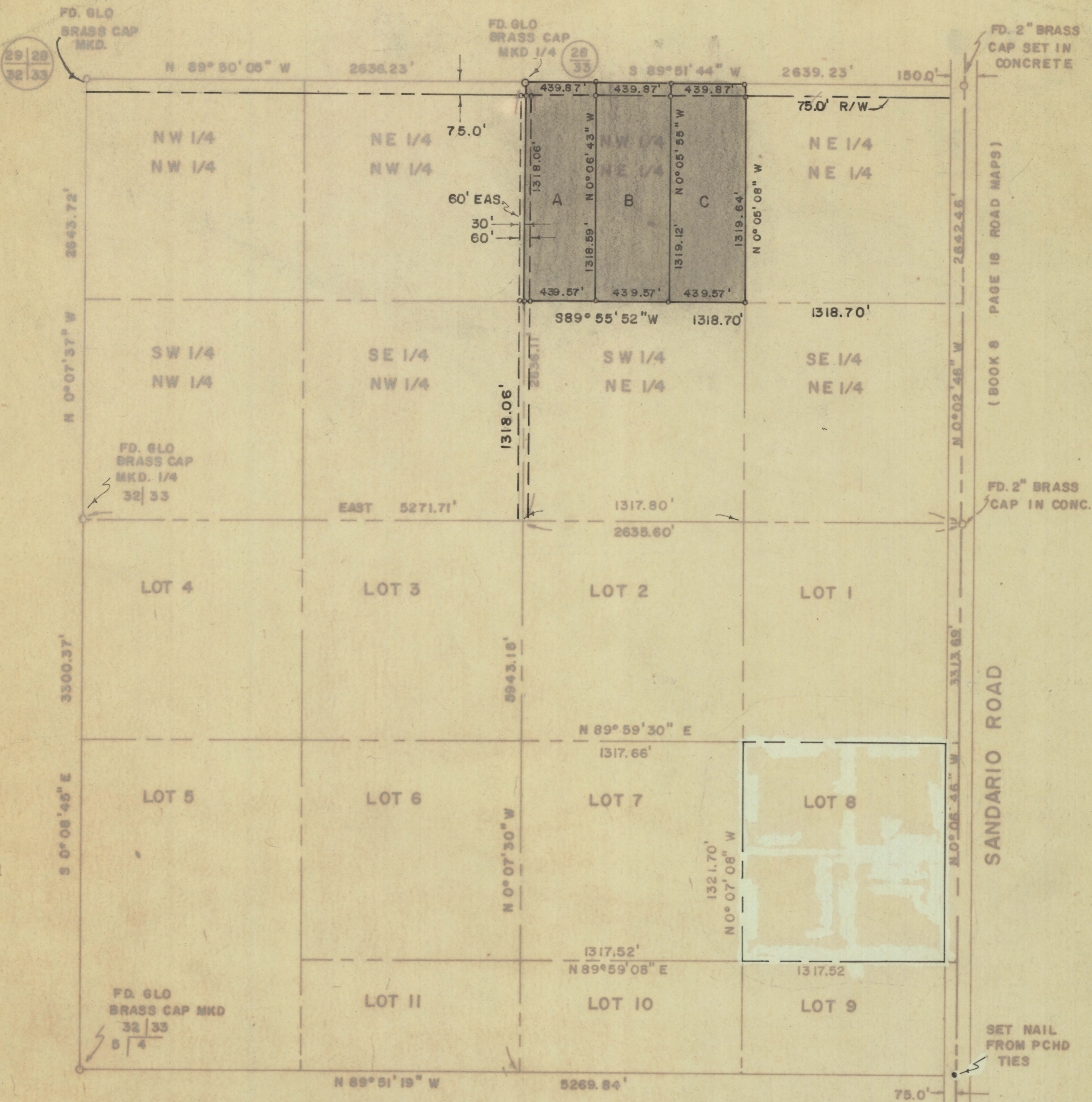


DISCLAIMER:

This unrecorded Record of Survey was donated to the City of Tucson. The City of Tucson provides this data for your personal use "as is." Additionally, the City of Tucson provides this information with the understanding that it is not guaranteed to be accurate, correct or complete and conclusions drawn from such information are the responsibility of the user.



RESULTS OF SURVEY

NOTES

- (1) INDICATES 5/8" STEEL PIN MKD. L.S. 4680 SET UNLESS NOTED
- (2) L.C.P. - LEAD CAP PIPE
- (3) INDICATES NAIL SET
- (4) SEE JOB # 73-99

OF THE NORTHWEST QUARTER OF THE NORTHEAST QUARTER OF SECTION 33, TOWNSHIP 12 SOUTH OF RANGE II EAST, GILA AND SALT RIVER BASE AND MERIDIAN, PIMA COUNTY, ARIZONA



ROBERT F. MELLEN
REGISTERED LAND SURVEYOR
TUCSON, ARIZONA

JOB # 78-95 AUGUST 78

Z-2020-103