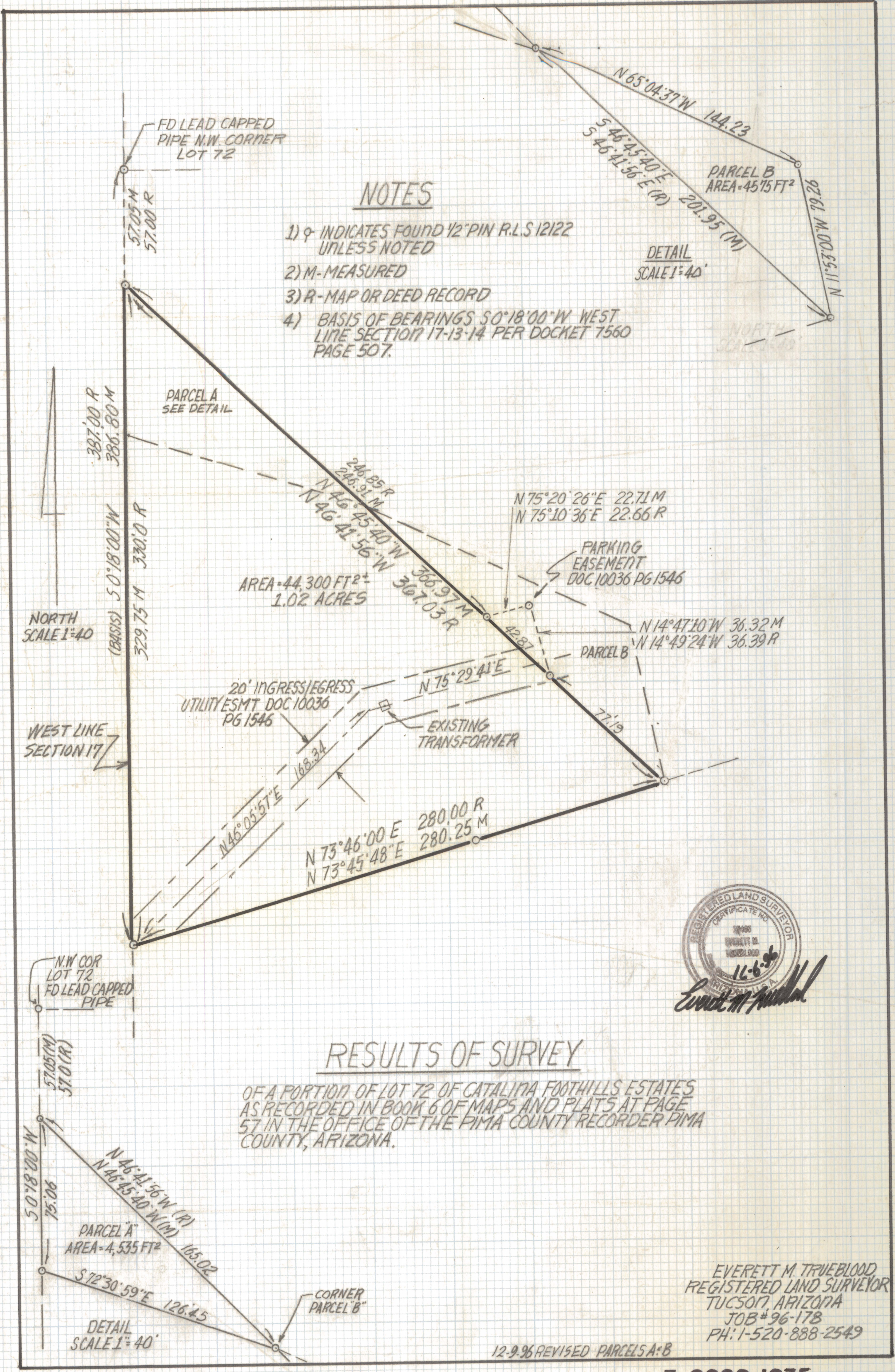


DISCLAIMER:

This unrecorded Record of Survey was donated to the City of Tucson. The City of Tucson provides this data for your personal use "as is." Additionally, the City of Tucson provides this information with the understanding that it is not guaranteed to be accurate, correct or complete and conclusions drawn from such information are the responsibility of the user.



NOTES

- 1) ϕ INDICATES FOUND 1/2" PIN R.L.S 12122 UNLESS NOTED
- 2) M-MEASURED
- 3) R-MAP OR DEED RECORD
- 4) BASIS OF BEARINGS S0°18'00"W WEST LINE SECTION 17-13-14 PER DOCKET 7560 PAGE 507.

DETAIL
SCALE 1:40

NORTH
SCALE 1:40

WEST LINE
SECTION 17



Everett M. Trueblood

RESULTS OF SURVEY

OF A PORTION OF LOT 72 OF CATALINA FOOTHILLS ESTATES AS RECORDED IN BOOK 6 OF MAPS AND PLATS AT PAGE 57 IN THE OFFICE OF THE PIMA COUNTY RECORDER PIMA COUNTY, ARIZONA.

EVERETT M. TRUEBLOOD
REGISTERED LAND SURVEYOR
TUCSON, ARIZONA
JOB # 96-178
PH: 1-520-888-2549

12-9-96 REVISED PARCELS A & B

Z-2020-1035