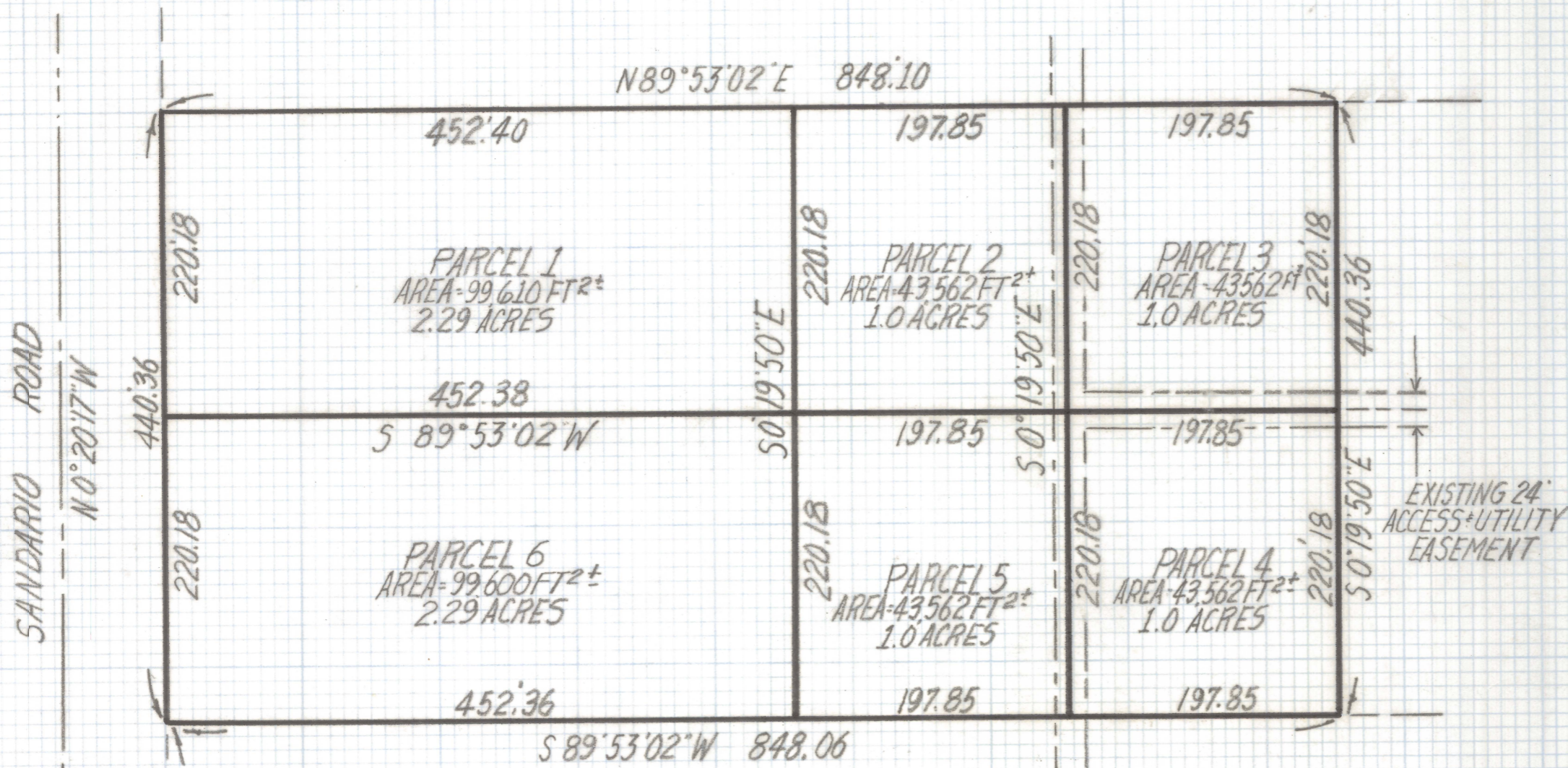


DISCLAIMER:

This unrecorded Record of Survey was donated to the City of Tucson. The City of Tucson provides this data for your personal use "as is." Additionally, the City of Tucson provides this information with the understanding that it is not guaranteed to be accurate, correct or complete and conclusions drawn from such information are the responsibility of the user.



SCALE 1"=100'

NOTE

- 1) WHOLE PARCEL CONTAINS 373,480 FT² 8.58 ACRES. THIS WAS SURVEYED BY SETTLEMAYER SURVEYS DATED AUG 15, 1989 N° 565-1101 B-1
- 2) SEE DOCKETS 9271/1155, 9725/570, 9272/1251 FOR EASEMENTS

SKETCH
OF

PROPOSED DIVISION OF A PROPERTY LOCATED IN A PORTION OF THE SOUTHWEST QUARTER OF THE NORTHWEST QUARTER OF SECTION 3 TOWNSHIP 13 SOUTH RANGE 11 EAST G.S.R.B:M PIMA COUNTY, ARIZONA.



EVERETT M. TRUEBLOOD
REGISTERED LAND SURVEYOR
TUCSON, ARIZONA
JOB# 96-180
PH: 1-520-888-2549

WEST 1/4 COR
SEC 3-13-11
75'
S 89° 53' 02" W