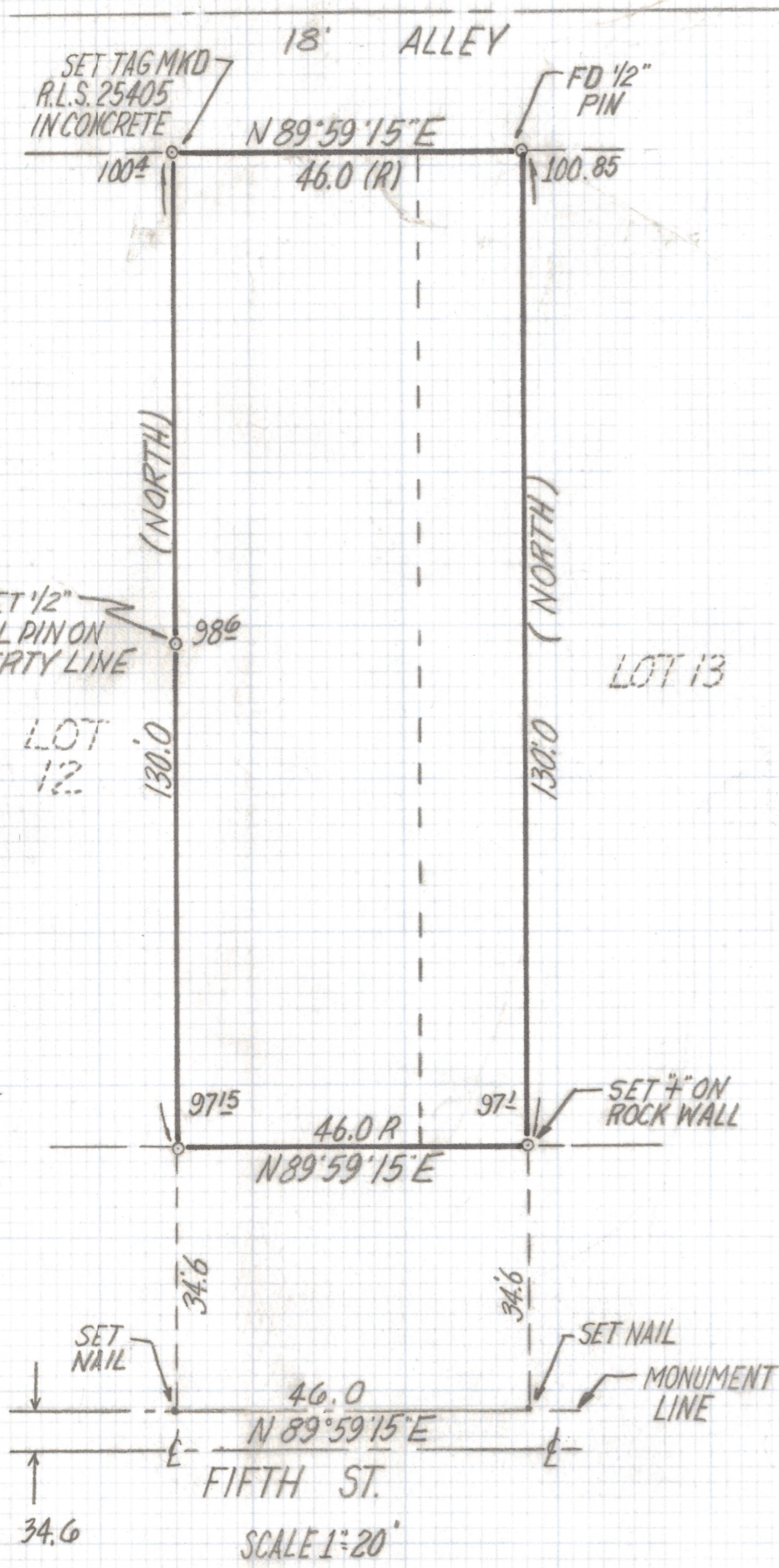


DISCLAIMER:

This unrecorded Record of Survey was donated to the City of Tucson. The City of Tucson provides this data for your personal use "as is." Additionally, the City of Tucson provides this information with the understanding that it is not guaranteed to be accurate, correct or complete and conclusions drawn from such information are the responsibility of the user.



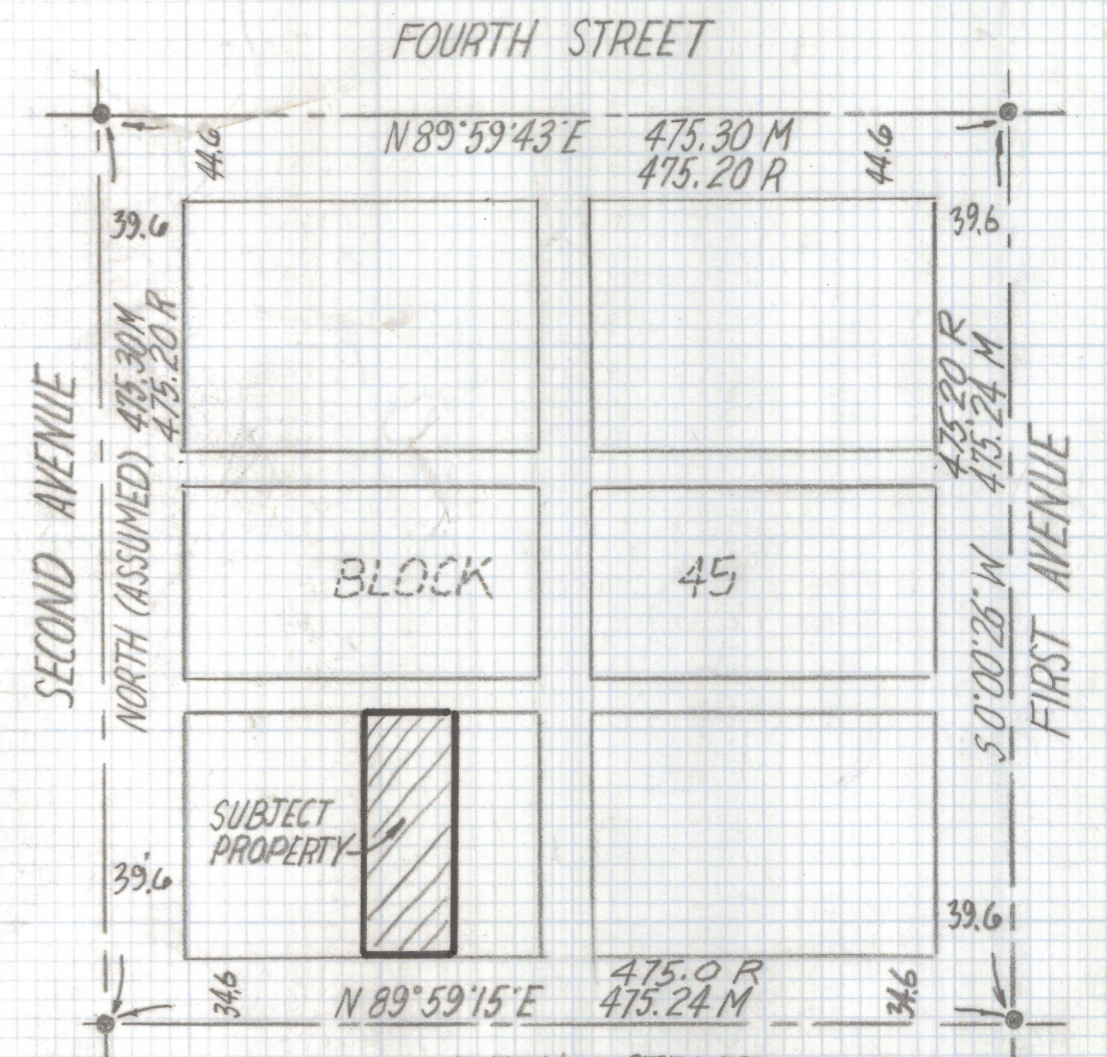
NORTH

NOTES

- 1) ● INDICATES FOUND 3/8" PIN IN HANDHOLE 5' NORTH OF CENTERLINE.
- 2) M- MEASURED
- 3) R- MAP OR DEED RECORD
- 4) BASIS OF BEARINGS NORTH (ASSUMED) CENTERLINE SECOND AVENUE
- 5) BASIS OF ELEVATION 100⁰⁰ TOP STEP OF CONCRETE PORCH.

RESULTS OF SURVEY

OF A PORTION OF LOT 12 AND 13 BLOCK 45 CITY OF TUCSON AS RECORDED IN BOOK 2 OF MAPS AND PLATS AT PAGE 41 IN THE OFFICE OF THE PIMA COUNTY RECORDER PIMA COUNTY ARIZONA.



FIFTH STREET LOCATION MAP

BLOCK 45 CITY OF TUCSON BOOK 2 PAGE 41 MAPS AND PLATS PIMA COUNTY, ARIZONA.

SCALE 1"=100'



EVERETT M. TRUEBLOOD
 REGISTERED LAND SURVEYOR
 TUCSON, ARIZONA
 JOB # 96-184
 PH: 1-520-888-2549