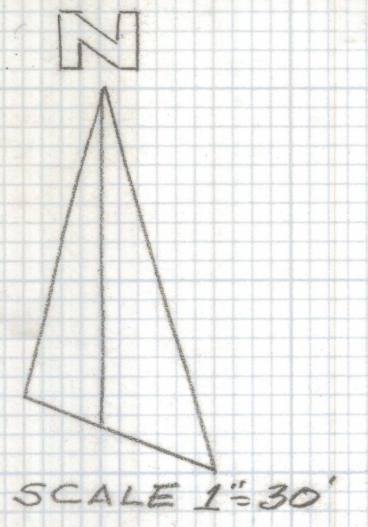
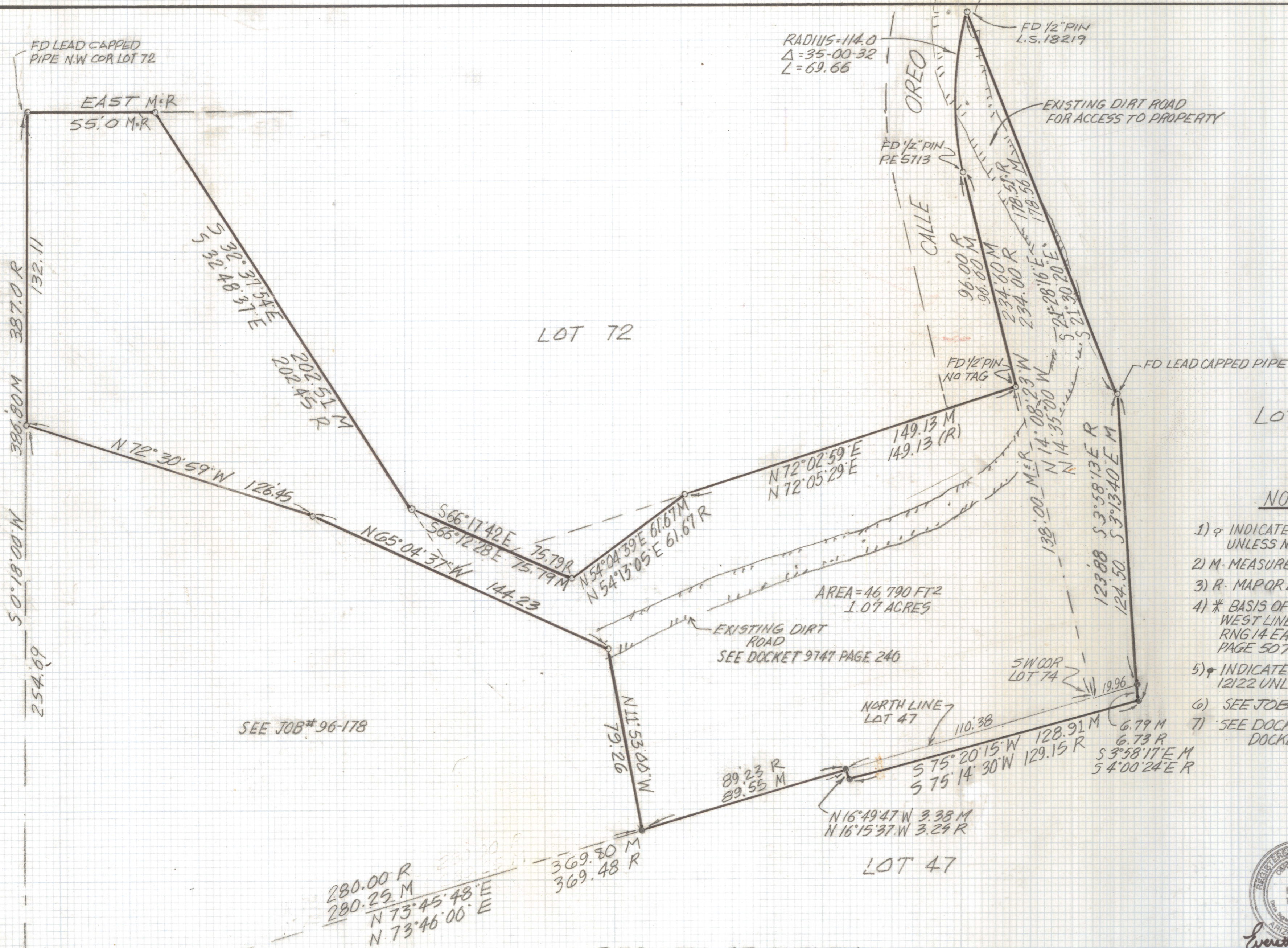


DISCLAIMER:

This unrecorded Record of Survey was donated to the City of Tucson. The City of Tucson provides this data for your personal use "as is." Additionally, the City of Tucson provides this information with the understanding that it is not guaranteed to be accurate, correct or complete and conclusions drawn from such information are the responsibility of the user.

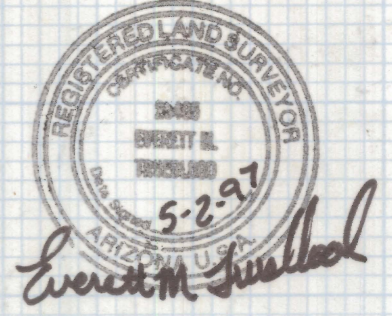


NOTES

- 1) ♀ INDICATES SET 1/2" PIN MKD R.L.S. 25405 UNLESS NOTED
- 2) M- MEASURED
- 3) R- MAP OR DEED RECORD
- 4) * BASIS OF BEARINGS 50° 28' 00" W WEST LINE SECTION 17 TWP 13 S RNG 14 EAST PER DOCKET 7560 PAGE 507
- 5) ♀ INDICATES FOUND 1/2" PIN RLS 12122 UNLESS NOTED
- 6) SEE JOB # 96-178
- 7) SEE DOCKET 8077 PAGE 1468 DOCKET 8077 PAGE 1460

RESULTS OF SURVEY

OF PORTIONS OF LOTS 47, 72 AND 74 OF CATALINA FOOTHILLS ESTATES AS RECORDED IN BOOK 6 OF MAPS AND PLATS AT PAGE 57 IN THE OFFICE OF THE PIMA COUNTY RECORDER PIMA COUNTY, ARIZONA.



DATE		REVISIONS	
EVERETT M. TRUEBLOOD LAND SURVEYING			
2300 West Ian Place Tucson, AZ 85741 (520) 888-2549			
Drawn By: EMT	Checked By: EMT	Date: 4-28-97	
Job No. 97-3	Scale: 1"=30'	Sheet 1 of 1	

Z-2020-1043