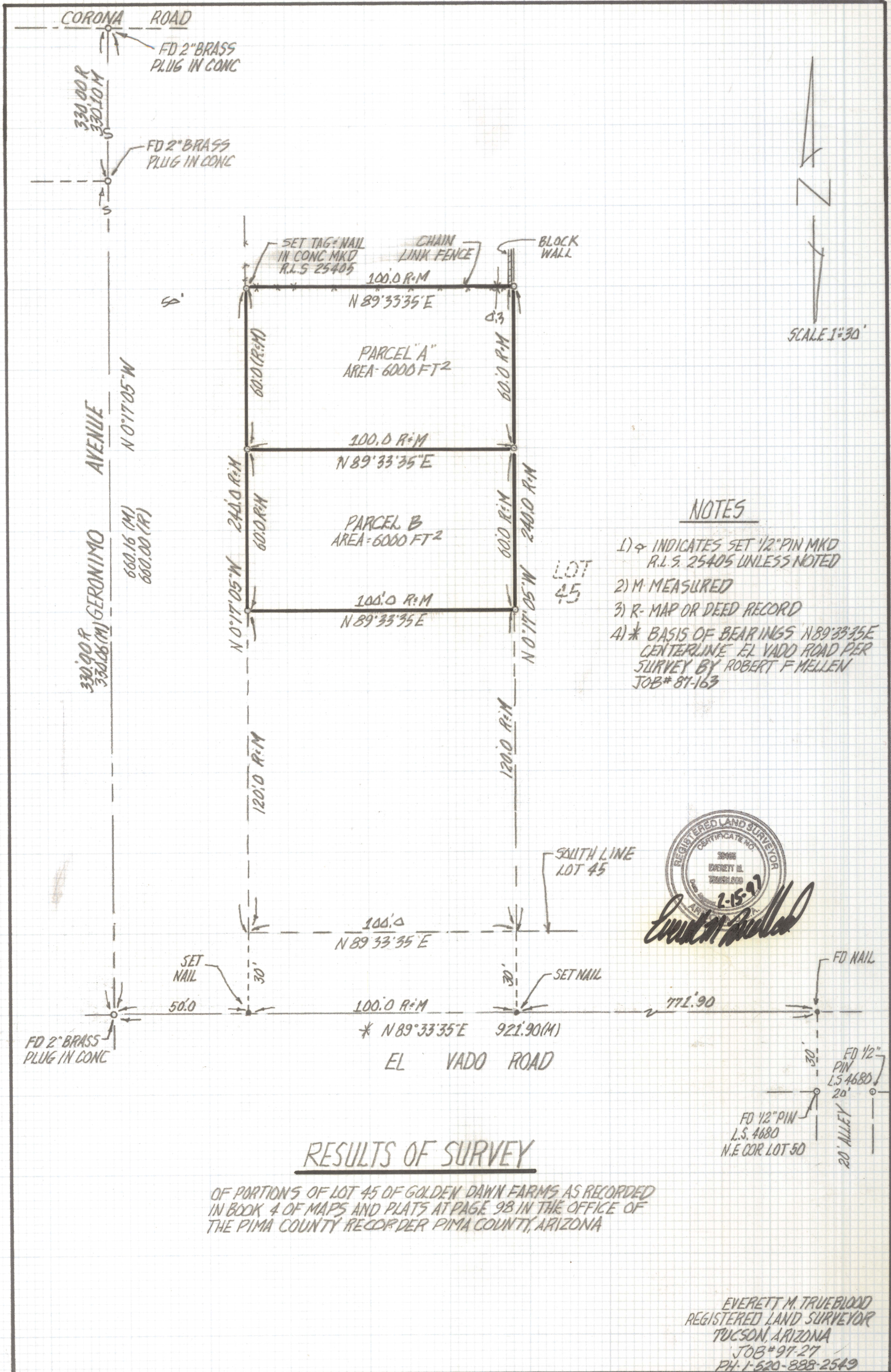


# **DISCLAIMER:**

**This unrecorded Record of Survey was donated to the City of Tucson. The City of Tucson provides this data for your personal use "as is." Additionally, the City of Tucson provides this information with the understanding that it is not guaranteed to be accurate, correct or complete and conclusions drawn from such information are the responsibility of the user.**



- NOTES**
- 1)  $\phi$  INDICATES SET 1/2" PIN MKD R.L.S. 25405 UNLESS NOTED
  - 2) M- MEASURED
  - 3) R- MAP OR DEED RECORD
  - 4) \* BASIS OF BEARINGS N 89° 33' 35" E CENTERLINE EL VADO ROAD PER SURVEY BY ROBERT F MELLEEN JOB# 87-163



**RESULTS OF SURVEY**

OF PORTIONS OF LOT 45 OF GOLDEN DAWN FARMS AS RECORDED IN BOOK 4 OF MAPS AND PLATS AT PAGE 98 IN THE OFFICE OF THE PIMA COUNTY RECORDER PIMA COUNTY, ARIZONA

EVERETT M. TRUEBLOOD  
 REGISTERED LAND SURVEYOR  
 TUCSON, ARIZONA  
 JOB# 97-27  
 PH: 1-520-888-2549