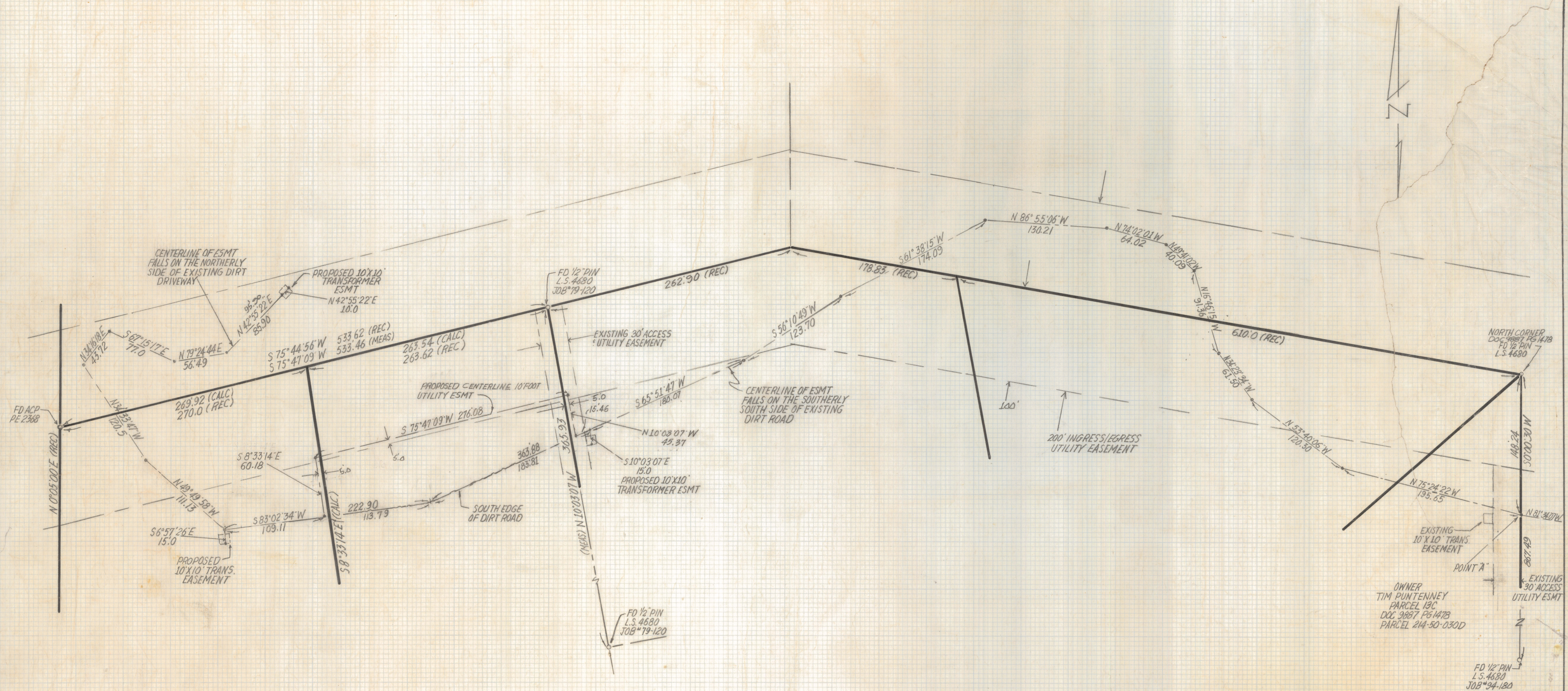


# **DISCLAIMER:**

**This unrecorded Record of Survey was donated to the City of Tucson. The City of Tucson provides this data for your personal use "as is." Additionally, the City of Tucson provides this information with the understanding that it is not guaranteed to be accurate, correct or complete and conclusions drawn from such information are the responsibility of the user.**



SKETCH  
OF  
LEGAL DESCRIPTION

OF A 10 FOOT UNDERGROUND ELECTRIC EASEMENT AND (3) 10'X10' TRANSFORMER EASEMENTS LOCATED IN A PORTION OF THE SOUTH HALF OF SECTION 27 TOWNSHIP 13 SOUTH RANGE 12 EAST G.S.R.B+M PIMA COUNTY, ARIZONA

LEGAL



DATE 4-2-97	REVISIONS EASEMENT LOCATION
4-14-97	EASEMENT LOCATION
<b>EVERETT M. TRUEBLOOD LAND SURVEYING</b> 2300 West Ian Place Tucson, AZ 85741 (520) 888-2549	
Drawn By: E.M.T.	Checked By: E.M.T.
Job No. 37-79	Date: 3-13-97
Scale: 1"=50'	Sheet 1 of 1

Z-2020-1050