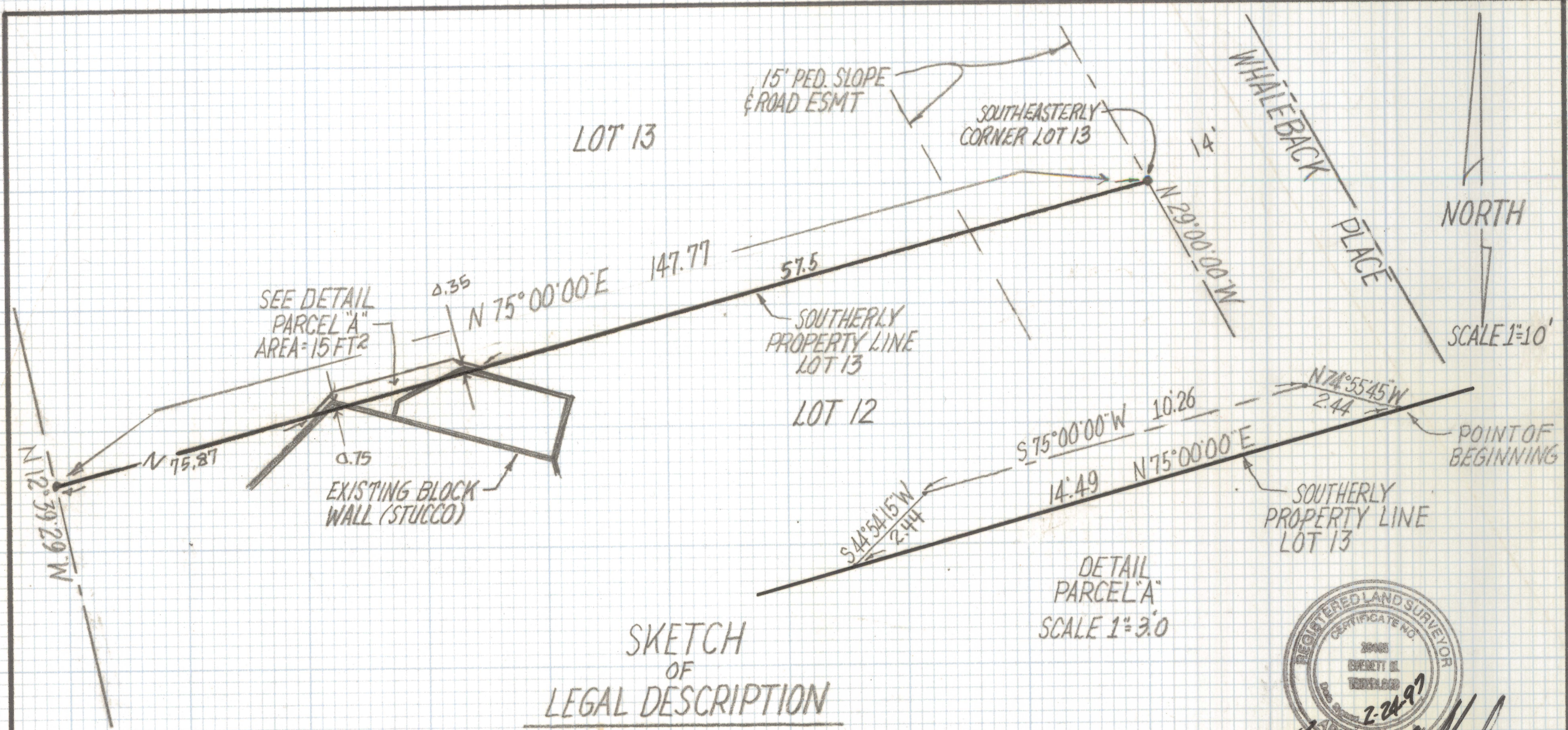


DISCLAIMER:

This unrecorded Record of Survey was donated to the City of Tucson. The City of Tucson provides this data for your personal use "as is." Additionally, the City of Tucson provides this information with the understanding that it is not guaranteed to be accurate, correct or complete and conclusions drawn from such information are the responsibility of the user.



SKETCH
OF
LEGAL DESCRIPTION

OF A PORTION OF LOT 13 WHALEBACK RIDGE ESTATES
AT VENTANA CANYON AS RECORDED IN BOOK 43 OF MAPS
AND PLATS AT PAGE 89 IN THE OFFICE OF THE PIMA
COUNTY RECORDER PIMA COUNTY ARIZONA.

DETAIL
PARCEL "A"
SCALE 1"=3.0'



Everett M. Trueblood
EVERETT M. TRUEBLOOD
REGISTERED LAND SURVEYOR
TUCSON, ARIZONA
JOB# 97-31
PH-1-520-888-2549