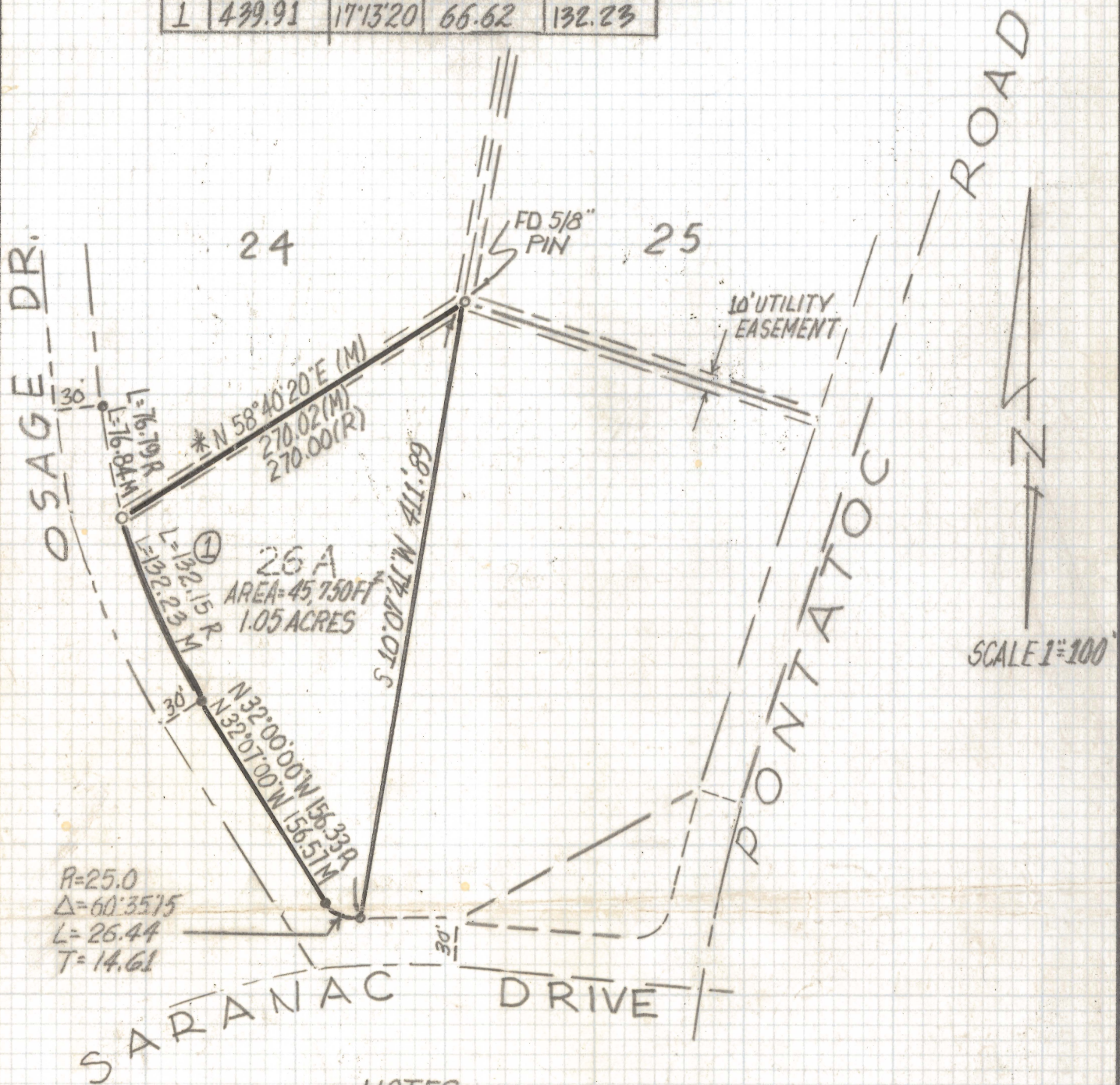


# **DISCLAIMER:**

**This unrecorded Record of Survey was donated to the City of Tucson. The City of Tucson provides this data for your personal use "as is." Additionally, the City of Tucson provides this information with the understanding that it is not guaranteed to be accurate, correct or complete and conclusions drawn from such information are the responsibility of the user.**

CURVE DATA				
N <sup>o</sup>	RADIUS	DELTA	TANGENT	LENGTH
1	499.91	17°13'20"	66.62	132.23



$R=25.0$   
 $\Delta=60.3515$   
 $L=26.44$   
 $T=14.61$

### NOTES

- 1)  $\phi$  INDICATES SET 1/2" PIN MKD R.L.S. 25405 UNLESS NOTED
- 2) M- MEASURED
- 3) R- MAP OR DEED RECORD
- 4) \* BASIS OF BEARINGS NORTH 58°40'20" EAST NORTHWESTERLY PROPERTY LINE LOT 26 OF PONTATOC UPLANDS. BOOK 10 PAGE 83 MAPS AND PLATS.
- 5)  $\rho$  INDICATES FOUND 3/4" LEAD CAPPED PIPE

### RESULTS OF SURVEY

OF A PORTION OF LOT 26 OF PONTATOC UPLANDS AS RECORDED IN BOOK 10 OF MAPS AND PLATS AT PAGE 83 IN THE OFFICE OF THE PIMA COUNTY RECORDER PIMA COUNTY, ARIZONA



*Everett M. Trueblood*

EVERETT M. TRUEBLOOD  
 REGISTERED LAND SURVEYOR  
 TUCSON, ARIZONA  
 JOB #97-35  
 PH: 1-520-888-2649

Z-2020-1053