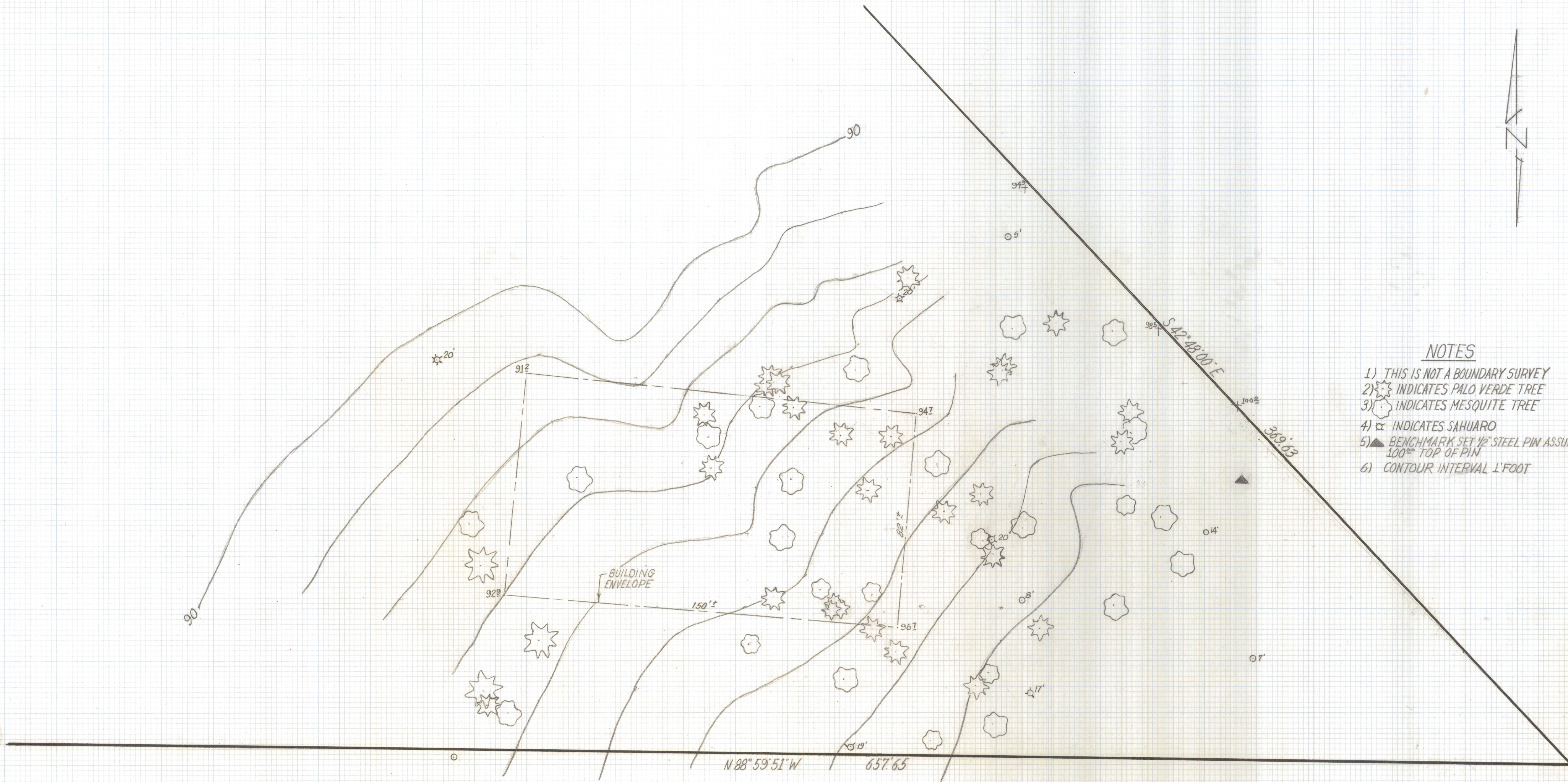


DISCLAIMER:

This unrecorded Record of Survey was donated to the City of Tucson. The City of Tucson provides this data for your personal use "as is." Additionally, the City of Tucson provides this information with the understanding that it is not guaranteed to be accurate, correct or complete and conclusions drawn from such information are the responsibility of the user.



NOTES

- 1) THIS IS NOT A BOUNDARY SURVEY
- 2) * INDICATES PALO VERDE TREE
- 3) ○ INDICATES MESQUITE TREE
- 4) □ INDICATES SAHUARO
- 5) ▲ BENCHMARK SET 1/2\"/>

SKETCH
OF

A PORTION OF THE NORTH HALF OF THE NORTHWEST QUARTER OF SECTION 28, TOWNSHIP 13 SOUTH, RANGE 16 EAST G&SRBM PIMA COUNTY ARIZONA.



DATE		REVISIONS
EVERETT M. TRUEBLOOD LAND SURVEYING 2300 West Inn Place Tucson, AZ 85741 (520) 882-2549		
Drawn By: E.M.T.	Checked By: E.M.T.	Date: 3-20-97
Job No. 97-41	Scale: 1"=20'	Sheet 1 of 1