

DISCLAIMER:

This unrecorded Record of Survey was donated to the City of Tucson. The City of Tucson provides this data for your personal use "as is." Additionally, the City of Tucson provides this information with the understanding that it is not guaranteed to be accurate, correct or complete and conclusions drawn from such information are the responsibility of the user.

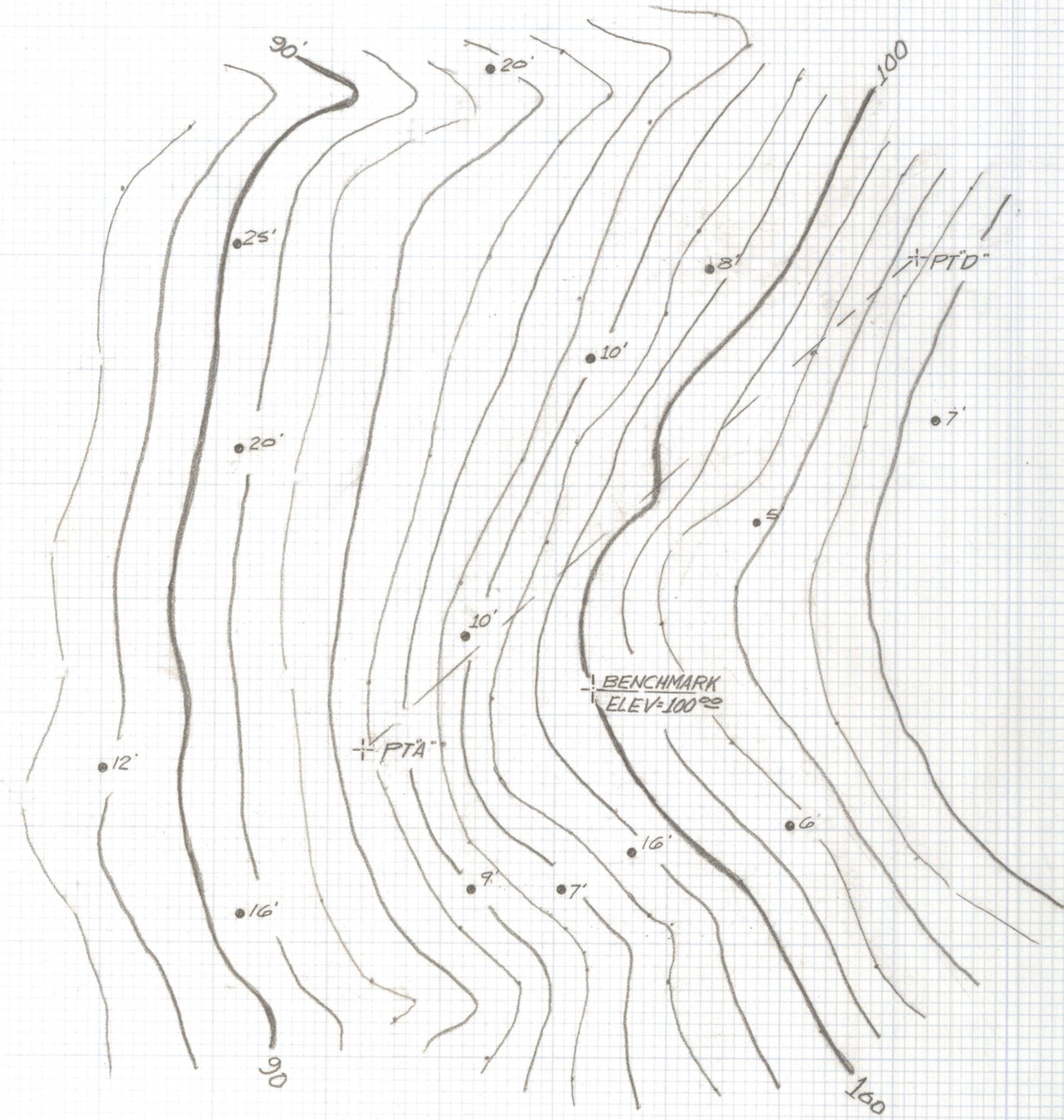


NE CORNER
PARCEL IC

SCALE 1"=20'

NOTES

- 1. ● 6' indicates saguaro and height
- 2. Benchmark assumed elevation 100.00 as located by contractor and shown on map.
- 3. Boundary Map information provided by contractor.



CONTOUR INTERVAL = 1.0 FOOT

425.0
NO 20 44 E

SKETCH OF TOPOGRAPHICAL SURVEY
 of a portion of the Northeast quarter of Section 20, Township 13 South,
 Range 16 East, Gila and Salt River Base and Meridian, Pima County,
 Arizona.



SE CORNER
PARCEL IC

DATE		REVISIONS
EVERETT M. TRUEBLOOD LAND SURVEYING 2300 West Ian Place Tucson, AZ 85741 (520) 888-2549		
Drawn By: <i>EMT</i>	Checked By: <i>EMT</i>	Date: 4-11-97
Job No. 97-46	Scale: 1"=20'	Sheet 1 of 1

Z-2020-1058