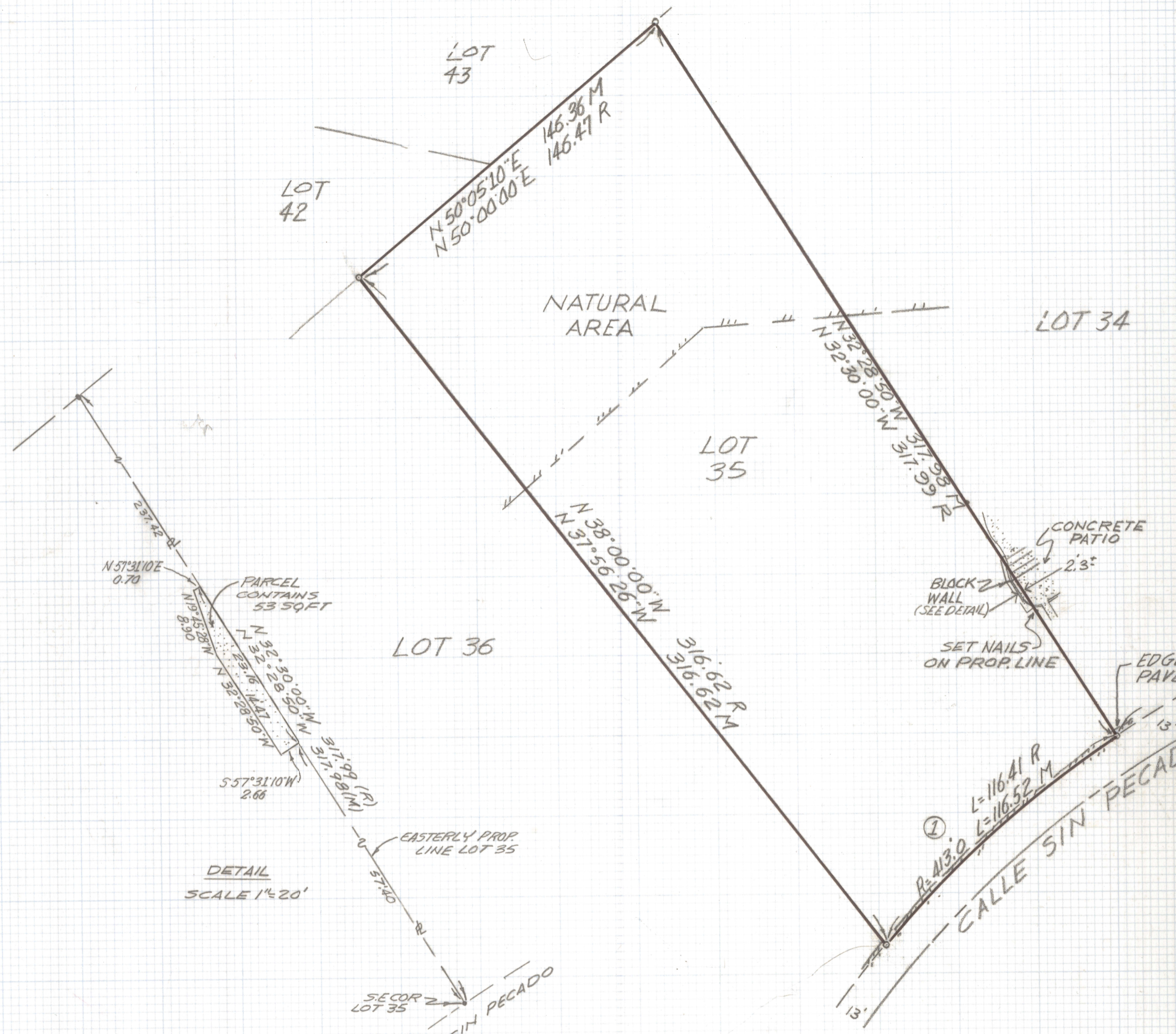
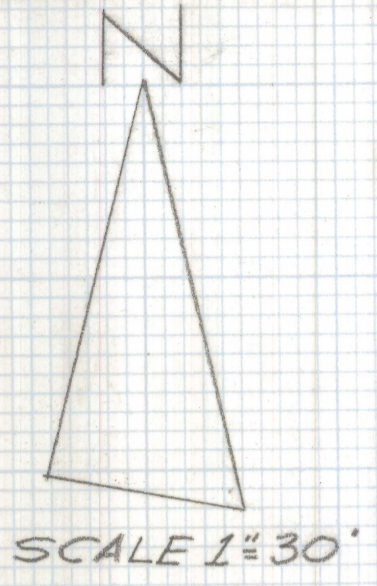
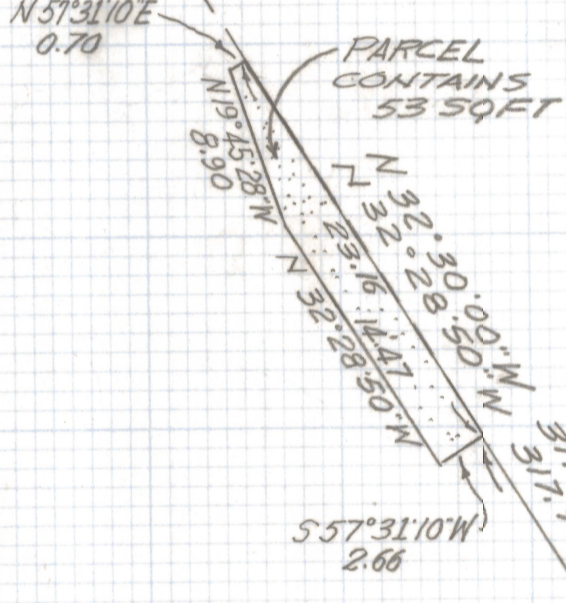


DISCLAIMER:

This unrecorded Record of Survey was donated to the City of Tucson. The City of Tucson provides this data for your personal use "as is." Additionally, the City of Tucson provides this information with the understanding that it is not guaranteed to be accurate, correct or complete and conclusions drawn from such information are the responsibility of the user.



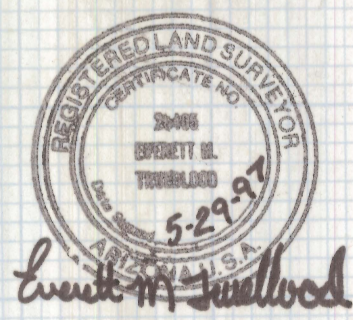
CURVE DATA					
Nº	RADIUS	DELTA	TANGENT	LENGTH	CHORD
①	413.0	1609'52"	58.65	116.52	116.13



- NOTES**
- 1) ϕ INDICATES FOUND 1/2" STEEL PIN MKD P.E. 8684 UNLESS NOTED
 - 2) M-MEASURED
 - 3) R-MAP OR DEED RECORD
 - 4) * BASIS OF BEARINGS N 72°19'33" E CENTERLINE CALLE SIN PECADO PER SIN VACAS BOOK 28 PAGE 54 MAPS AND PLATS.
 - 5) THE FRONT CORNERS OF LOT 35 FALL IN THE ASPHALT APPROXIMATELY 1 TO 2 FEET ±

RESULTS OF SURVEY

OF LOT 35 OF SIN VACAS AS RECORDED IN BOOK 28 OF MAPS AND PLATS AT PAGE 54 IN THE OFFICE OF THE PIMA COUNTY RECORDER PIMA COUNTY, ARIZONA



DATE	REVISIONS	
EVERETT M. TRUEBLOOD LAND SURVEYING 2300 West Ian Place Tucson, AZ 85741 (520) 888-2549		
Drawn By: EMT	Checked By: EMT	Date: 5-29-97
Job No. 97-60	Scale: 1"=30'	Sheet 1 of 1

Revised WALL Parcel 2-19-98