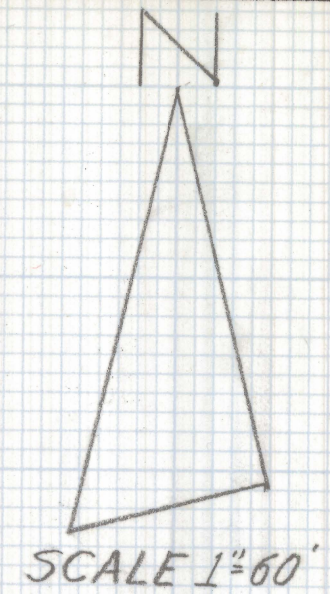
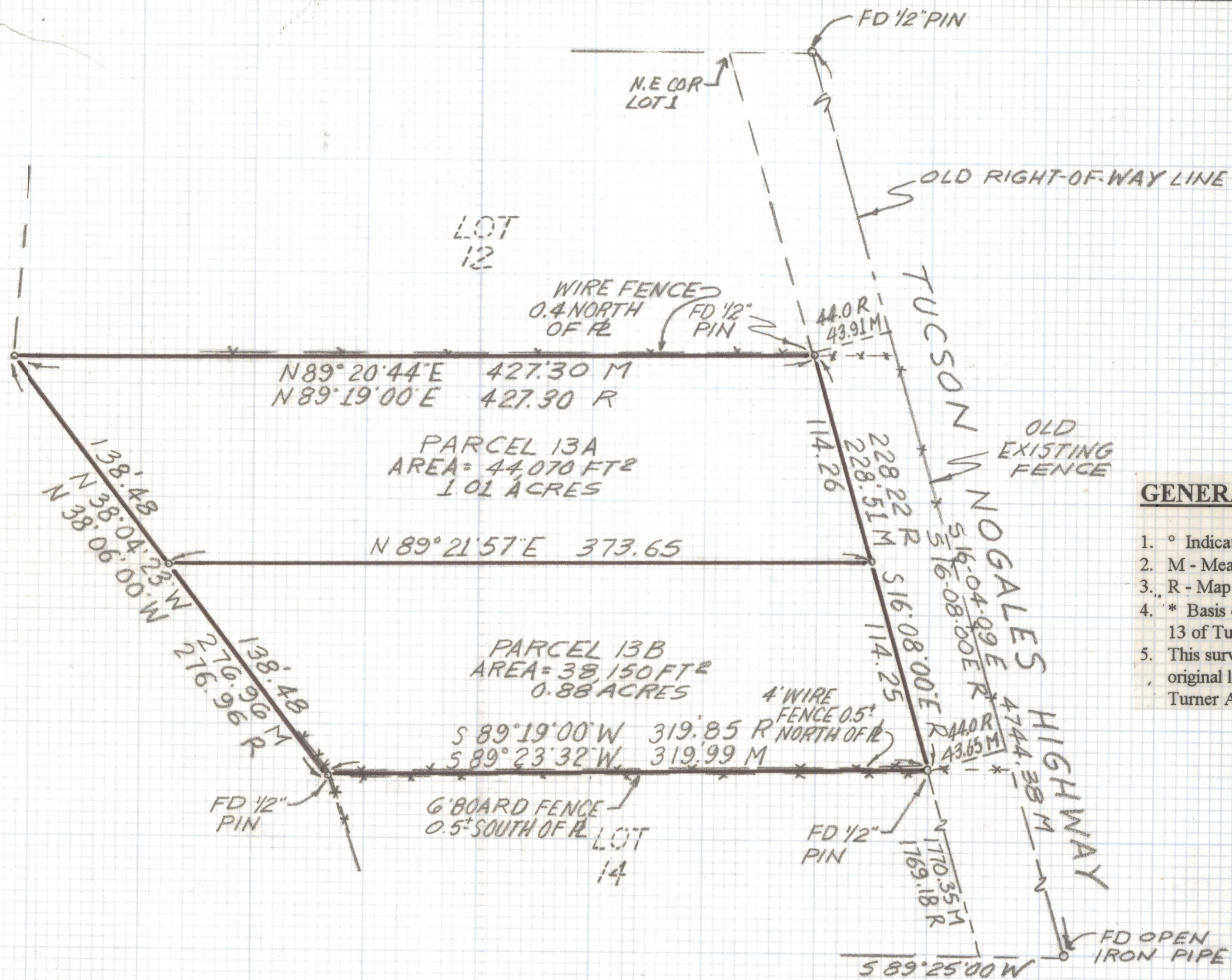


# **DISCLAIMER:**

**This unrecorded Record of Survey was donated to the City of Tucson. The City of Tucson provides this data for your personal use "as is." Additionally, the City of Tucson provides this information with the understanding that it is not guaranteed to be accurate, correct or complete and conclusions drawn from such information are the responsibility of the user.**

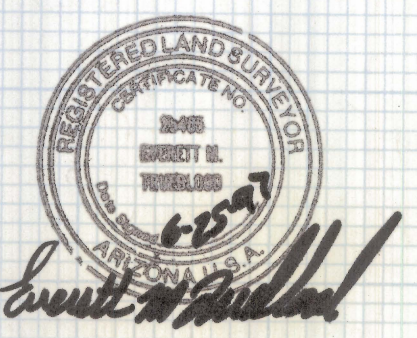


**GENERAL NOTES**

1. ° Indicates set 1/2" pin mkd RLS 25405 unless noted.
2. M - Measured
3. R - Map or deed record
4. \* Basis of bearings South 16° 08' 00" East. East property line of Lot 13 of Turner Acres Book 8 Page 55 Maps and Plats.
5. This survey is based on the found 1/2" steel pins which were set as original lot corners and noted on the recorded subdivision plat of Turner Acres.

**RESULTS OF SURVEY**

Of Lot 13 of Turner Acres as recorded in Book 8 of Maps and Plats at Page 55, in the office of the Pima County Recorder Pima County, Arizona.



DATE	REVISIONS
<b>EVERETT M. TRUEBLOOD LAND SURVEYING</b>	
2300 West Ian Place	
Tucson, AZ 85741	
(520) 888-2549	
Drawn By: E.M.T	Checked By: E.M.T
Job No. 97-69	Date: 6-20-97
Scale: 1"=60'	Sheet 1 of 1