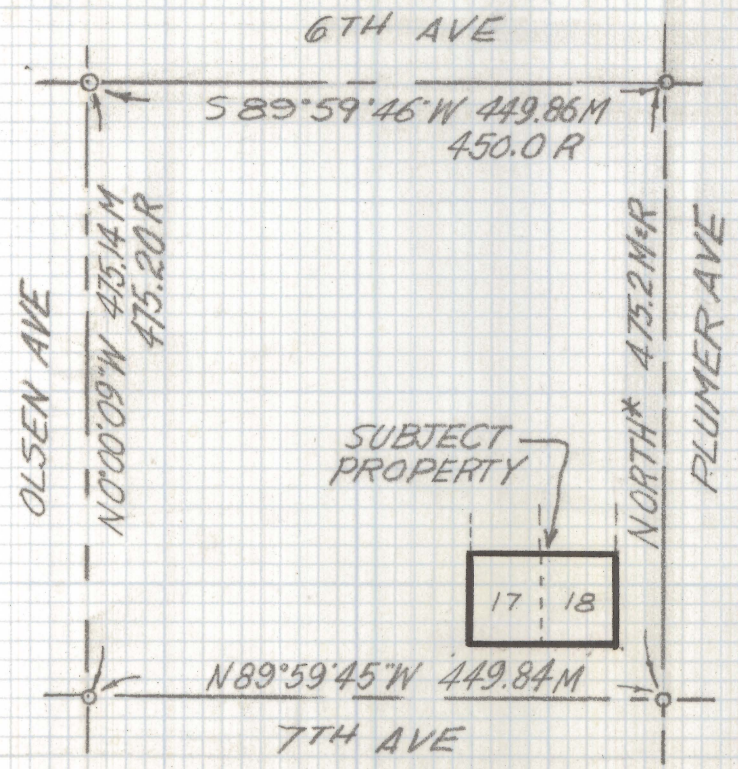
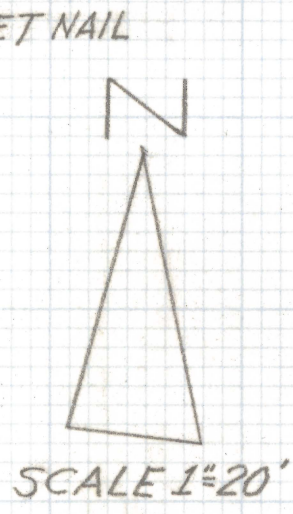
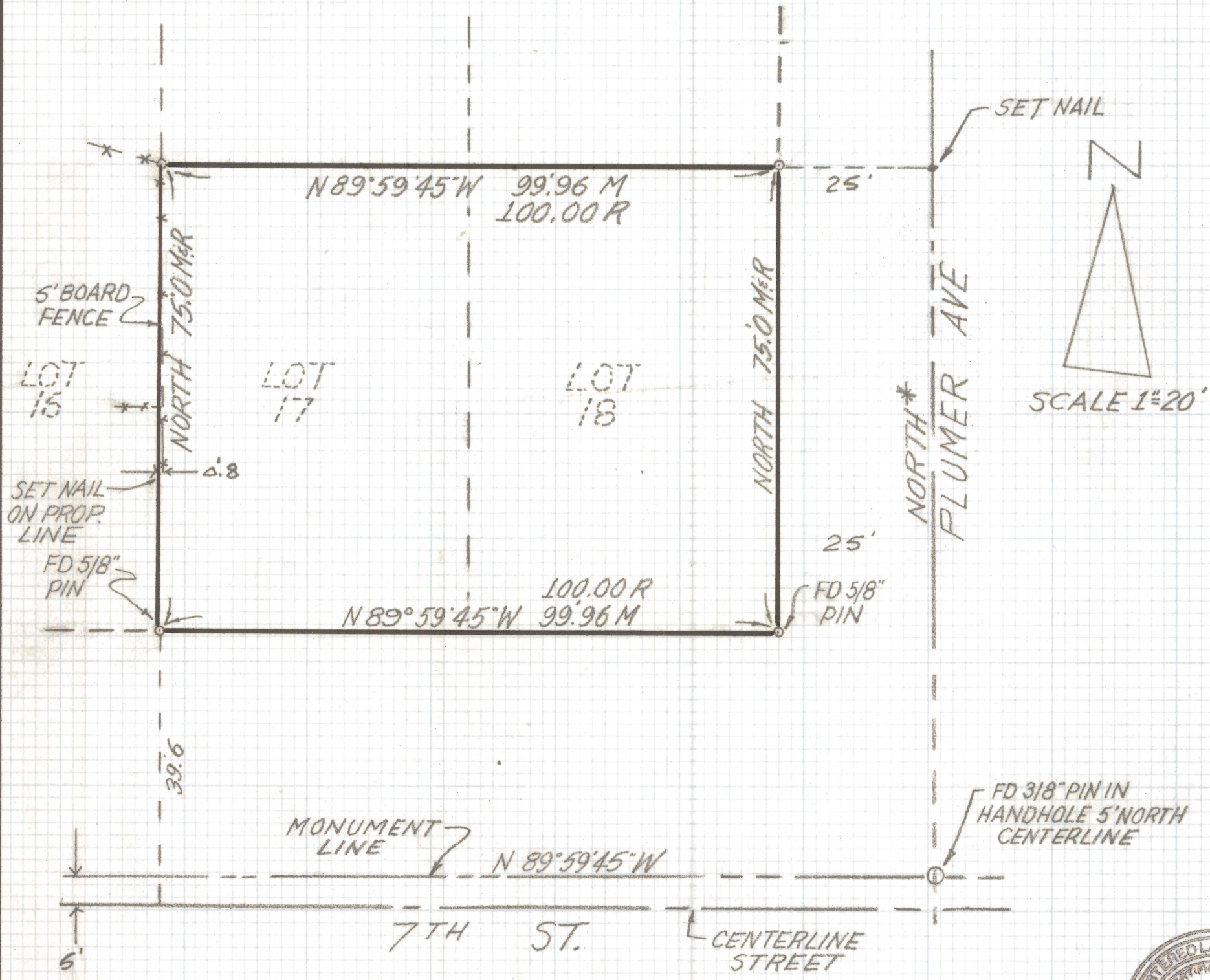


DISCLAIMER:

This unrecorded Record of Survey was donated to the City of Tucson. The City of Tucson provides this data for your personal use "as is." Additionally, the City of Tucson provides this information with the understanding that it is not guaranteed to be accurate, correct or complete and conclusions drawn from such information are the responsibility of the user.



LOCATION MAP
 BLOCK 21 FAIRMOUNT ADDITION
 BOOK 4 PAGE 32 M&P
 PIMA COUNTY ARIZ
 SCALE 1"=150'

NOTES

- 1) ♀ INDICATES SET 1/2" PIN RLS 25405 UNLESS NOTED
- 2) M-MEASURED
- 3) R- MAP OR DEED RECORD
- 4) * BASIS OF BEARINGS ASSUMED "NORTH" CENTERLINE PLUMER AVENUE

RESULTS OF SURVEY

OF THE SOUTH 75 FEET OF LOTS 17 AND 18 BLOCK 21 FAIRMOUNT ADDITION AS RECORDED IN BOOK 4 OF MAPS AND PLATS AT PAGE 32 IN THE OFFICE OF THE PIMA COUNTY RECORDER PIMA COUNTY, ARIZONA



DATE		REVISIONS
EVERETT M. TRUEBLOOD LAND SURVEYING		
2300 West Ian Place Tucson, AZ 85741 (520) 888-2549		
Drawn By: EMT	Checked By: EMT	Date: 6-30-97
Job No. 97-75	Scale: 1"=20'	Sheet 1 of 1