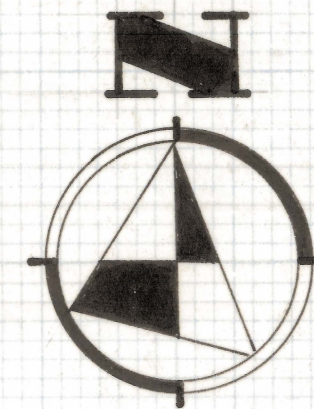


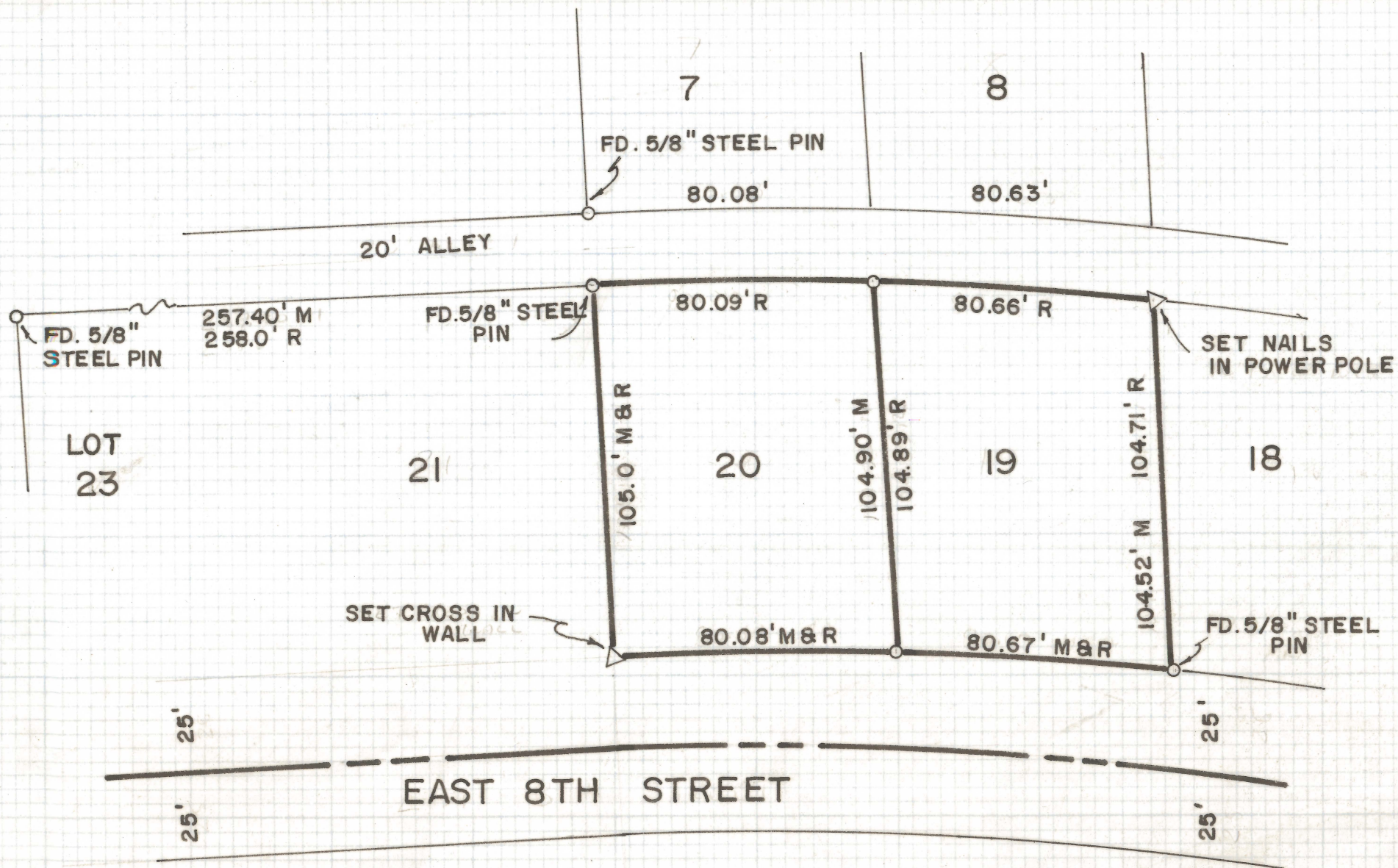
# **DISCLAIMER:**

**This unrecorded Record of Survey was donated to the City of Tucson. The City of Tucson provides this data for your personal use "as is." Additionally, the City of Tucson provides this information with the understanding that it is not guaranteed to be accurate, correct or complete and conclusions drawn from such information are the responsibility of the user.**





SCALE 1" = 40'



## RESULTS OF SURVEY OF

LOTS 19 AND 20 OF HIGHLAND VISTA SUBDIVISION AS RECORDED IN BOOK 9 AT PAGE 87 OF MAPS AND PLATS IN THE OFFICE OF THE PIMA COUNTY RECORDER, PIMA COUNTY, ARIZONA

M - MEASURED DISTANCE  
 R - MAP RECORD  
 ○ INDICATES 5/8" STEEL PIN MKD. L.S. 4680

ROBERT F. MELLEN  
 REGISTERED LAND SURVEYOR  
 TUCSON, ARIZONA

JOB #72-119 IM

Z-2020-109