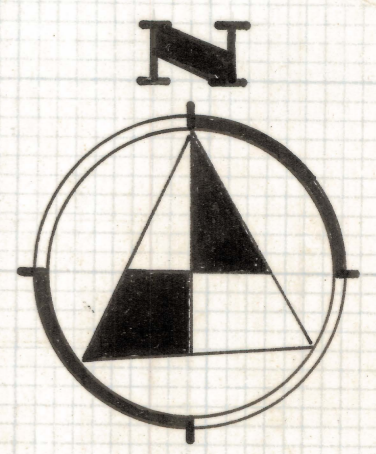
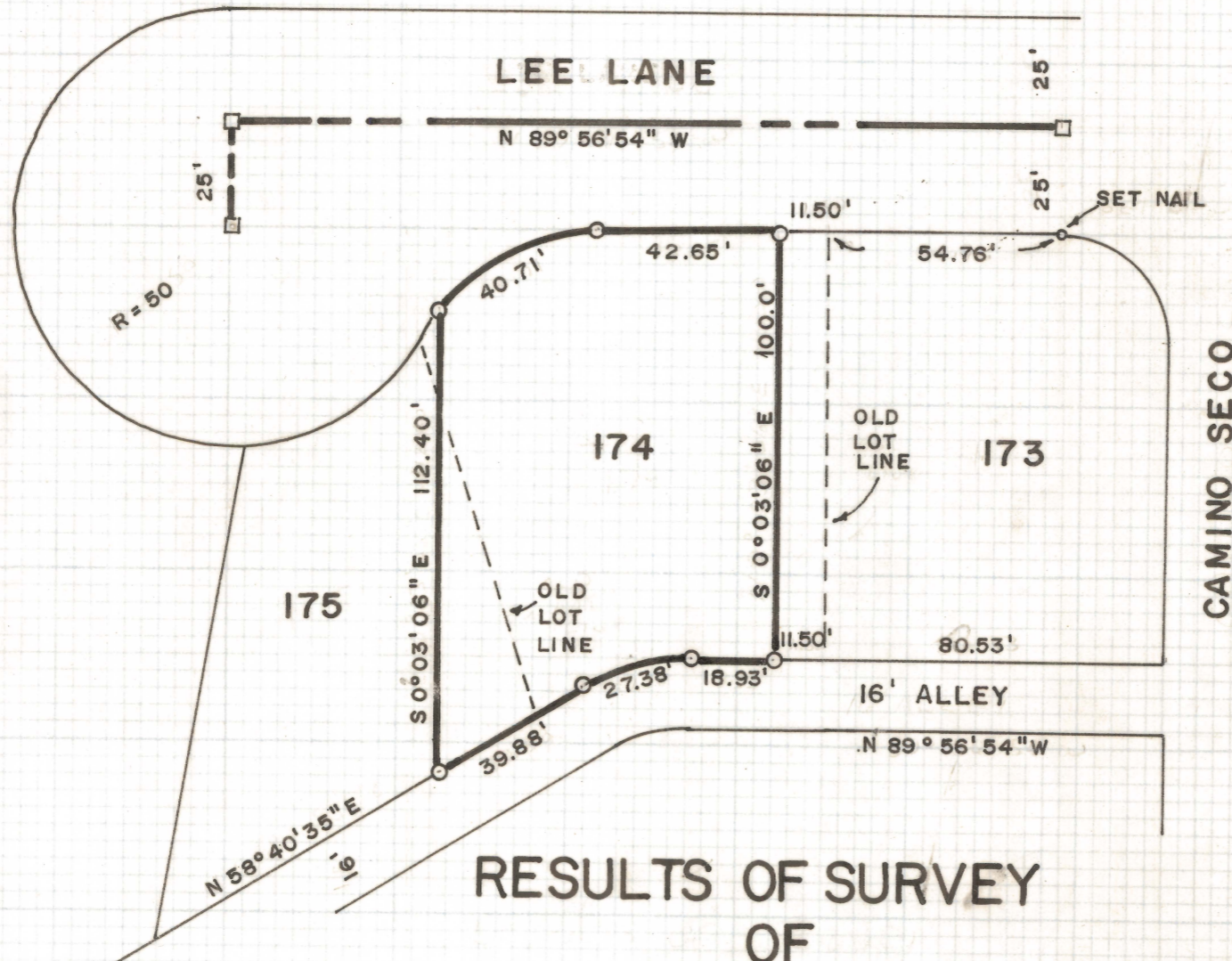
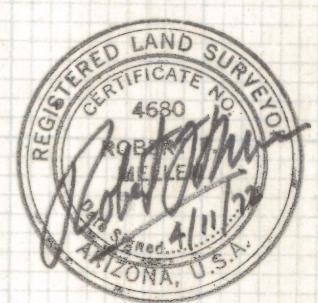


DISCLAIMER:

This unrecorded Record of Survey was donated to the City of Tucson. The City of Tucson provides this data for your personal use "as is." Additionally, the City of Tucson provides this information with the understanding that it is not guaranteed to be accurate, correct or complete and conclusions drawn from such information are the responsibility of the user.



SCALE 1" = 40'



RESULTS OF SURVEY OF

PORTIONS OF LOTS 174 AND 175 OF HIDDEN HILLS SUBDIVISION AS RECORDED IN BOOK 20 AT PAGE 68 IN THE OFFICE OF THE PIMA COUNTY RECORDER, PIMA COUNTY, ARIZONA

**ROBERT F. MELLEN
REGISTERED LAND SURVEYOR
TUCSON, ARIZONA**

INDICATES STEEL PIN SET MARKED L.S. 4680

JOB # 72-44 IM

Z-2020-115

CLEARPRINT