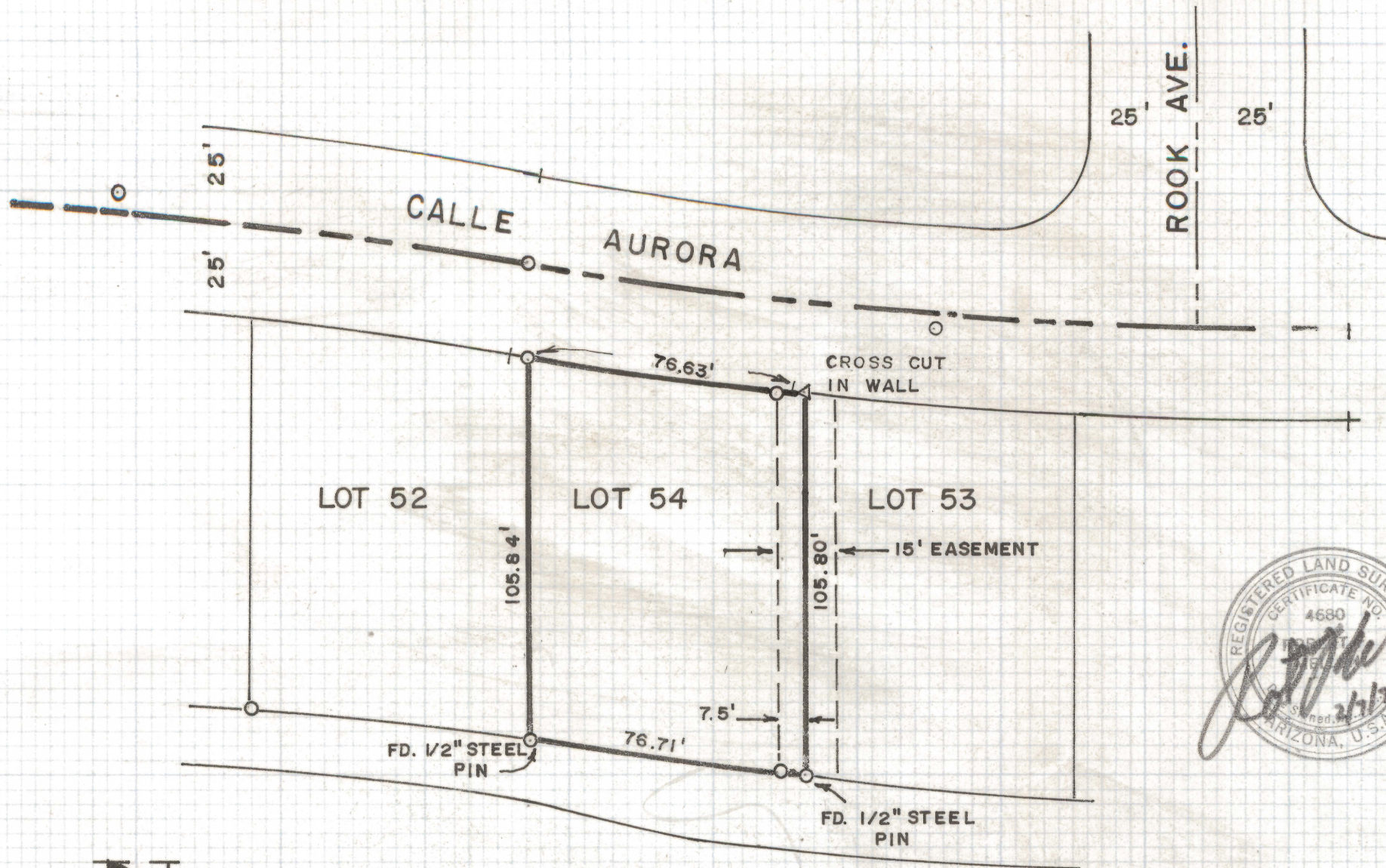


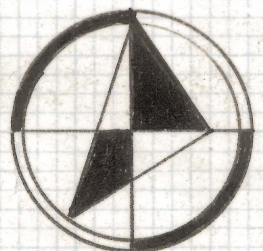
# **DISCLAIMER:**

**This unrecorded Record of Survey was donated to the City of Tucson. The City of Tucson provides this data for your personal use "as is." Additionally, the City of Tucson provides this information with the understanding that it is not guaranteed to be accurate, correct or complete and conclusions drawn from such information are the responsibility of the user.**





N



SCALE 1" = 40'

## RESULTS OF SURVEY OF

LOT 54 OF CAVALIER ESTATES SUBDIVISION  
AS RECORDED IN BOOK 12 OF MAPS AND PLATS  
AT PAGE 28 IN THE OFFICE OF THE PIMA  
COUNTY RECORDER, PIMA COUNTY, ARIZONA

ROBERT F. MELLEN  
REGISTERED LAND SURVEYOR  
TUCSON, ARIZONA

72-15

IM

Z-2020-125