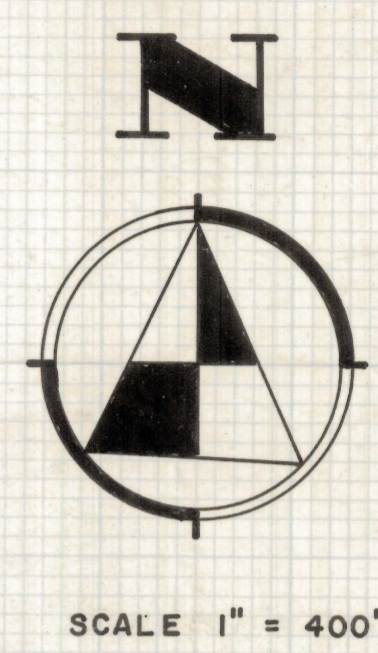
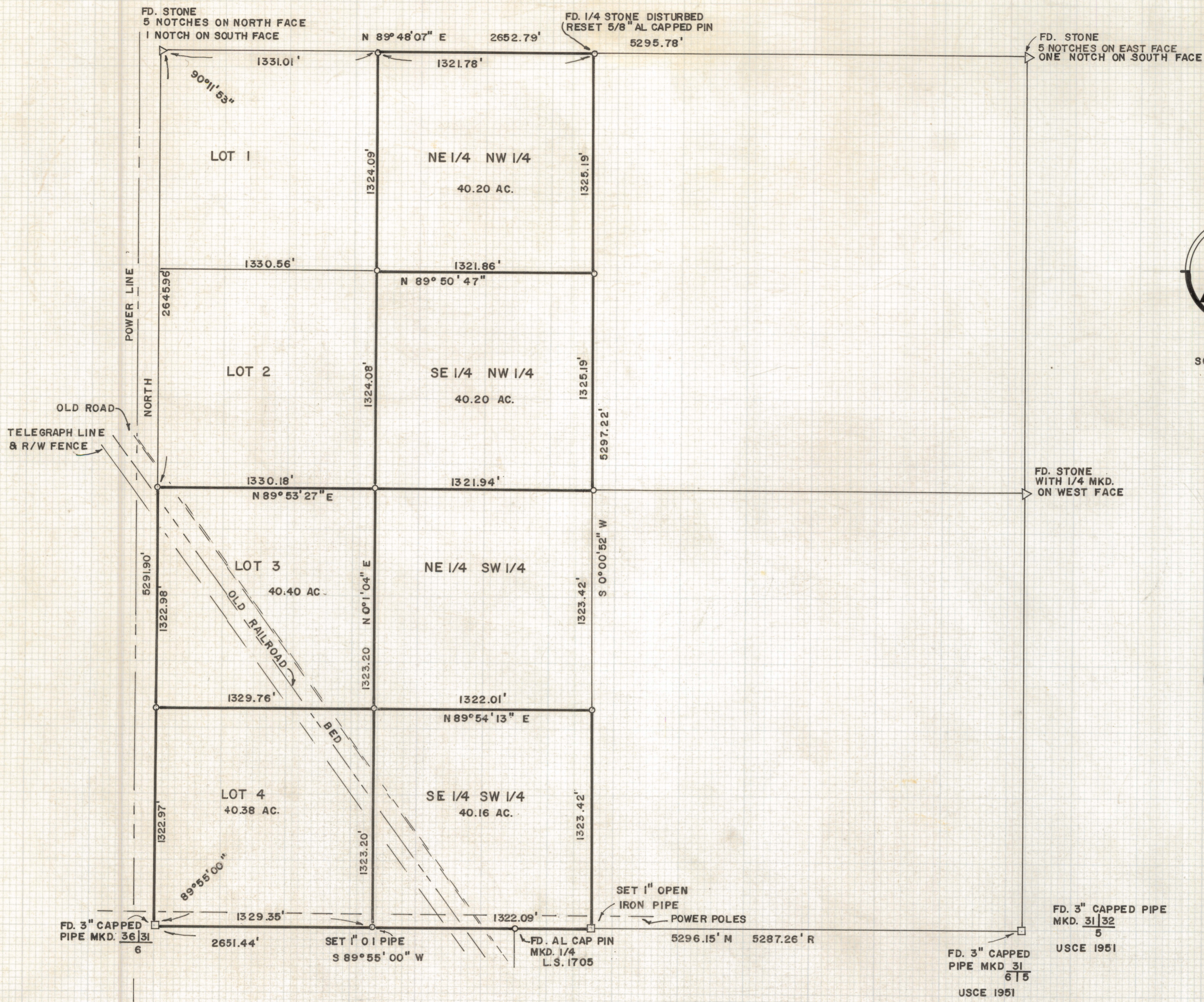


DISCLAIMER:

This unrecorded Record of Survey was donated to the City of Tucson. The City of Tucson provides this data for your personal use "as is." Additionally, the City of Tucson provides this information with the understanding that it is not guaranteed to be accurate, correct or complete and conclusions drawn from such information are the responsibility of the user.



RESULTS OF SURVEY
OF

LOTS 3 AND 4, THE EAST ONE HALF OF THE NORTHWEST QUARTER
AND THE SOUTHEAST QUARTER OF THE SOUTHWEST QUARTER OF
SECTION 31, TOWNSHIP 15 SOUTH, RANGE 16 EAST, GILA AND SALT
RIVER BASE AND MERIDIAN, PIMA COUNTY, ARIZONA

ROBERT F. MELLEN
REGISTERED LAND SURVEYOR
TUCSON, ARIZONA

INDICATES 5/8" STEEL PIN
WITH AL CAP MARKED L.S. 4680
SET UNLESS OTHERWISE NOTED
R = G.L.O. RECORD PLAT DISTANCE.
M = MEASURED