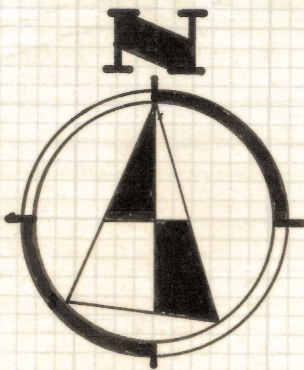
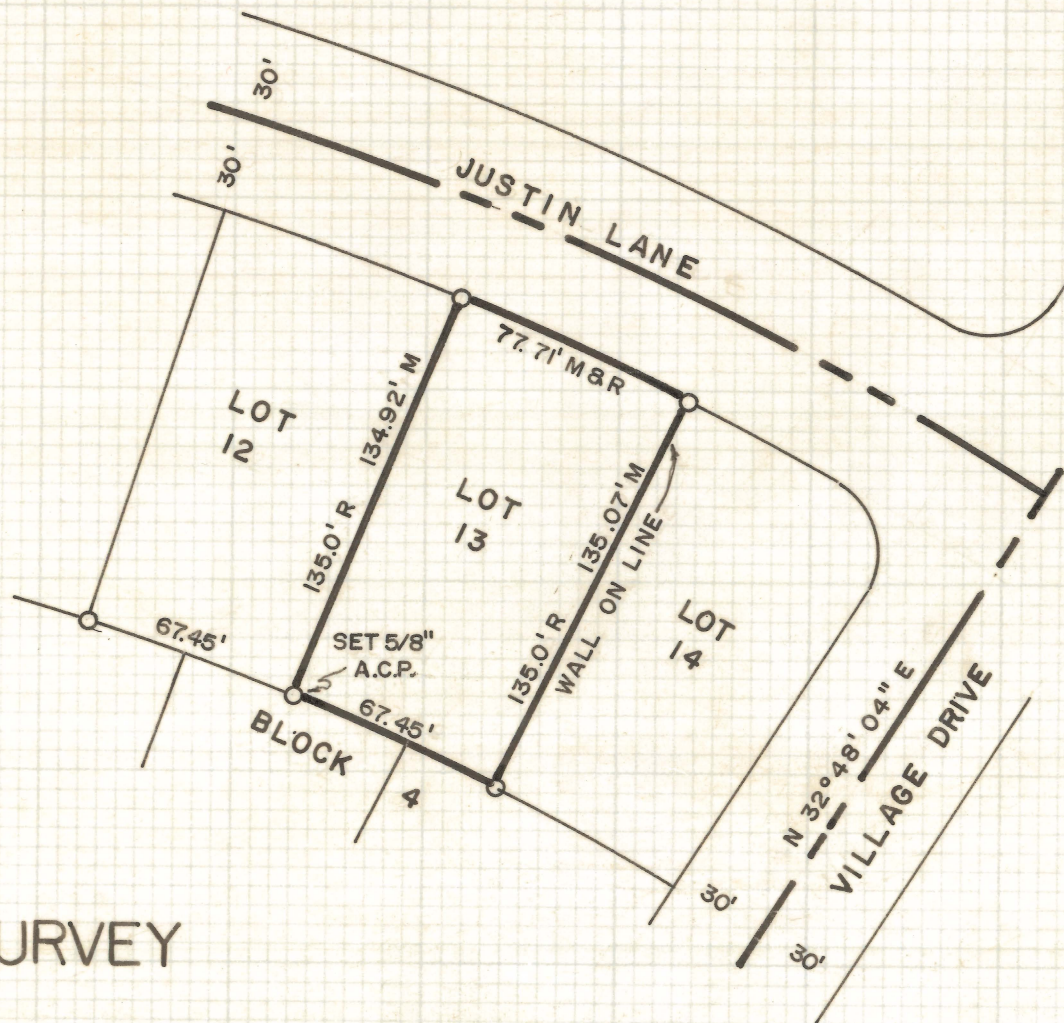


DISCLAIMER:

This unrecorded Record of Survey was donated to the City of Tucson. The City of Tucson provides this data for your personal use "as is." Additionally, the City of Tucson provides this information with the understanding that it is not guaranteed to be accurate, correct or complete and conclusions drawn from such information are the responsibility of the user.



SCALE 1" = 60'



RESULTS OF SURVEY OF

LOT 13 BLOCK 4 OF FRONTIER VILLAGE
SUBDIVISION AS RECORDED IN BOOK 7
OF MAPS AND PLATS AT PAGE 69 IN
THE OFFICE OF THE PIMA COUNTY RE-
CORDER, PIMA COUNTY, ARIZONA

INDICATES 3/4" OPEN IRON PIPE FOUND
ACP ALUMINUM CAPPED PIN

ROBERT F. MELLEN
REGISTERED LAND SURVEYOR
TUCSON, ARIZONA

JOB # 72-32

Z-2020-134