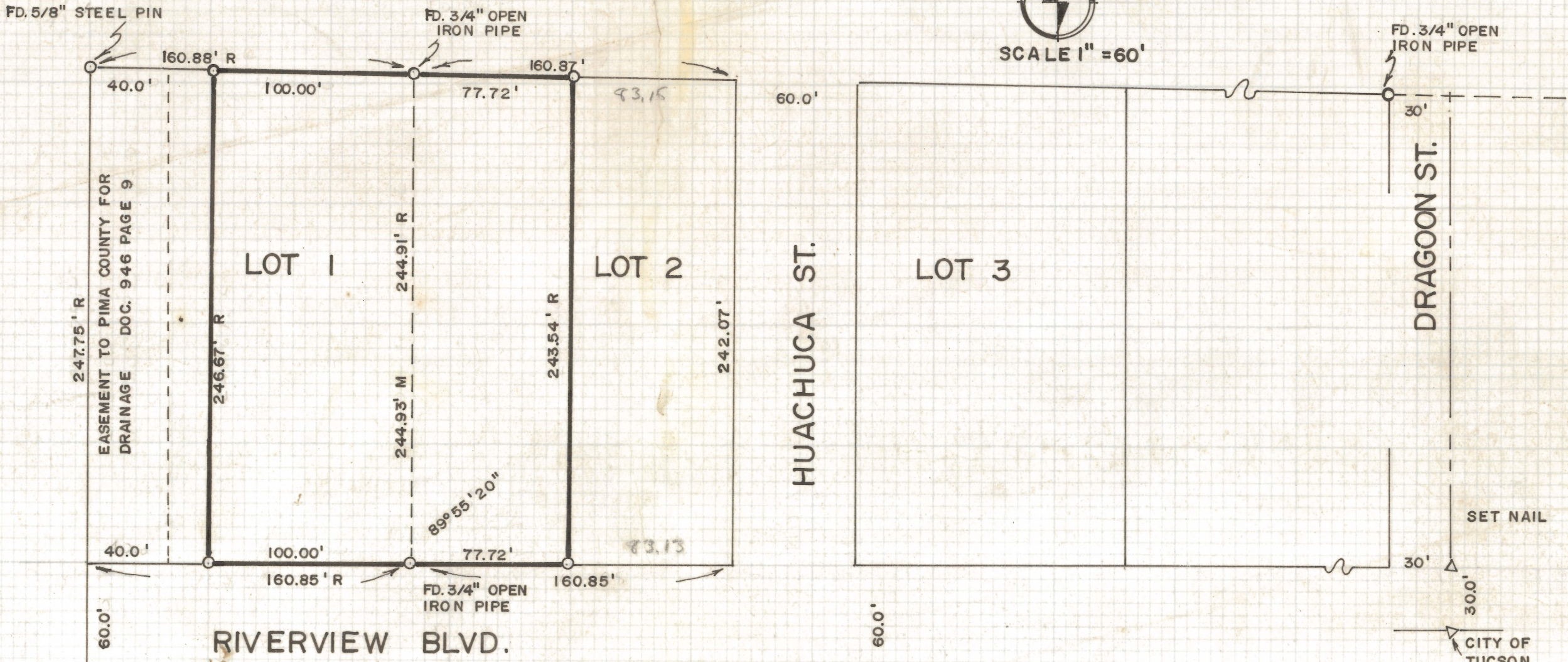
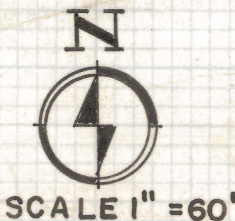


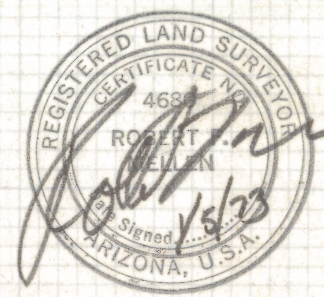
# **DISCLAIMER:**

**This unrecorded Record of Survey was donated to the City of Tucson. The City of Tucson provides this data for your personal use "as is." Additionally, the City of Tucson provides this information with the understanding that it is not guaranteed to be accurate, correct or complete and conclusions drawn from such information are the responsibility of the user.**



**RESULTS OF SURVEY OF**

THE EAST 100.0 FEET OF LOT 1 AND THE WEST 77.72 FEET OF LOT 2 OF EL RIO ACRES SUB-DIVISION AS RECORDED IN BOOK 6 OF MAPS AND PLATS AT PAGE II IN THE OFFICE OF PIMA COUNTY RECORDER, PIMA CO., ARIZONA



ROBERT F. MELLEN  
REGISTERED LAND SURVEYOR  
TUCSON, ARIZONA  
JOB # 72-167

M - MEASURED DISTANCE  
R - MAP RECORD

○ INDICATES 5/8" STEEL PIN SET MKD. L.S. 4680 UNLESS NOTED