

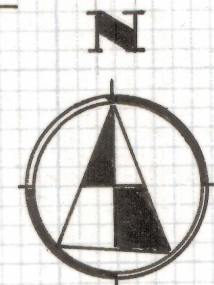
DISCLAIMER:

This unrecorded Record of Survey was donated to the City of Tucson. The City of Tucson provides this data for your personal use "as is." Additionally, the City of Tucson provides this information with the understanding that it is not guaranteed to be accurate, correct or complete and conclusions drawn from such information are the responsibility of the user.

FD. 5/8" STEEL PIN
SET IN CONC.

RESULTS OF SURVEY OF

THE SOUTH 85.0 FEET OF LOT 34
BLOCK B OF VISTA DEL MONTE TRACT
AS RECORDED IN BOOK 5 OF MAPS &
PLATS AT PAGE 63 IN THE OFFICE
OF THE PIMA COUNTY RECORDER, PIMA
COUNTY, ARIZONA



SCALE 1" = 50'

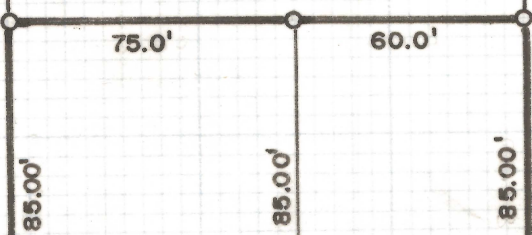


COLUMBUS BLVD.

ORCHARD AVE.

LOT 34

LOT 35



30' 30'

89°20'00"

85.00'

75.0'

85.00'

60.0'

85.00'

75.05'

60.0'

135.05' M 135.0' R

FLOWER AVE.

300.10' M

300.0' R

CITY OF TUCSON
STD. S.M.

CITY OF TUCSON
STD. S.M.

M - MEASURED

R - RECORD

ROBERT F. MELLEN
REGISTERED LAND SURVEYOR
TUCSON, ARIZONA

JOB # 72-87

IM

Z-2020-137