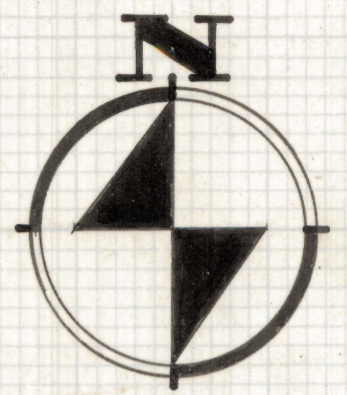
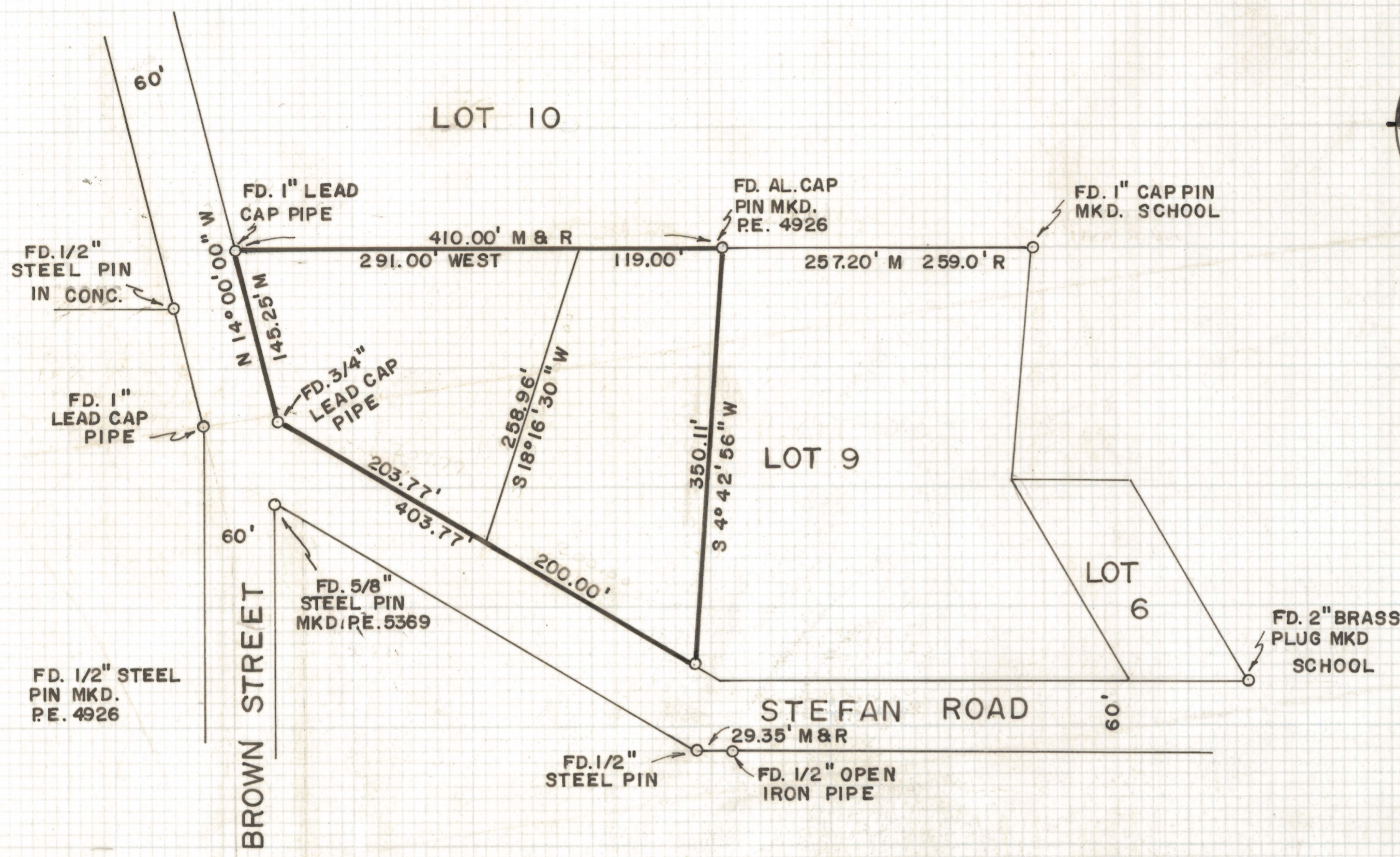


DISCLAIMER:

This unrecorded Record of Survey was donated to the City of Tucson. The City of Tucson provides this data for your personal use "as is." Additionally, the City of Tucson provides this information with the understanding that it is not guaranteed to be accurate, correct or complete and conclusions drawn from such information are the responsibility of the user.



SCALE 1" = 100'

RESULTS OF SURVEY OF

PART OF LOT 9 OF HALCYON ACRES
 SUBDIVISION AS RECORDED IN BOOK
 6 OF MAPS AND PLATS AT PAGE 40
 IN THE OFFICE OF THE PIMA COUNTY
 RECORDER, PIMA COUNTY, ARIZONA



NOTES

- (1) INDICATES 5/8" STEEL PIN SET MKD. L.S. 4680 UNLESS NOTED
- (2) R - MAP RECORD
- (3) M - MEASURED DISTANCE OR ANGLE
- (4) TOTAL ACREAGE 2.11 ACRES

ROBERT F. MELLEN
 REGISTERED LAND SURVEYOR
 TUCSON, ARIZONA

JOB # 72-165

IM