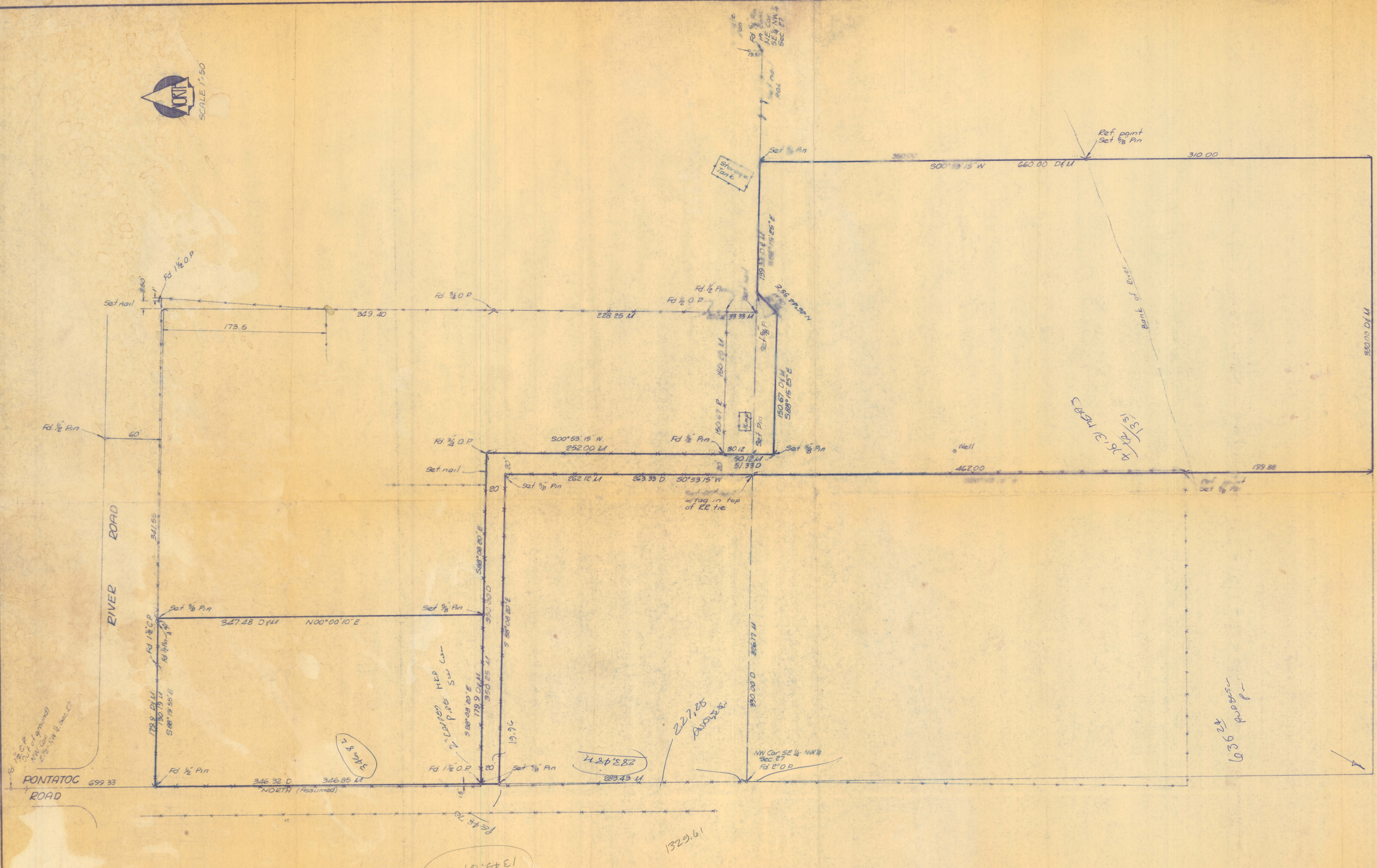


# **DISCLAIMER:**

**This unrecorded Record of Survey was donated to the City of Tucson. The City of Tucson provides this data for your personal use "as is." Additionally, the City of Tucson provides this information with the understanding that it is not guaranteed to be accurate, correct or complete and conclusions drawn from such information are the responsibility of the user.**





8 1/2" C.P.  
Set out ground  
M.C. Co.  
1872-1874 & 1880-82

PONTATOC ROAD  
699.33

RIVER ROAD

73.50

1343.61 H

4245.82

227.25  
ROAD

1329.61

NW 1/4 SE 1/4 NW 1/4  
SEC 27

4763.94  
1/5 SL  
CASH

6036  
24  
p. 0052

7240

Note:  
'D' indicates Deed distance  
'M' indicates measured distance



SURVEY OF PART OF THE E 1/2 - NW 1/4  
OF SECTION 27, T. 13 S., R. 14 E., G. & S.  
R.B. & M., PIMA COUNTY, ARIZONA  
Feb. 1971 For Frank Durin 70353  
CELLA, BARR, EVANS AND ASSOCIATES  
ENGINEERS AND PLANNERS  
2075 North Sixth Avenue • Tucson, Arizona 85705 • (602) 622-5445



