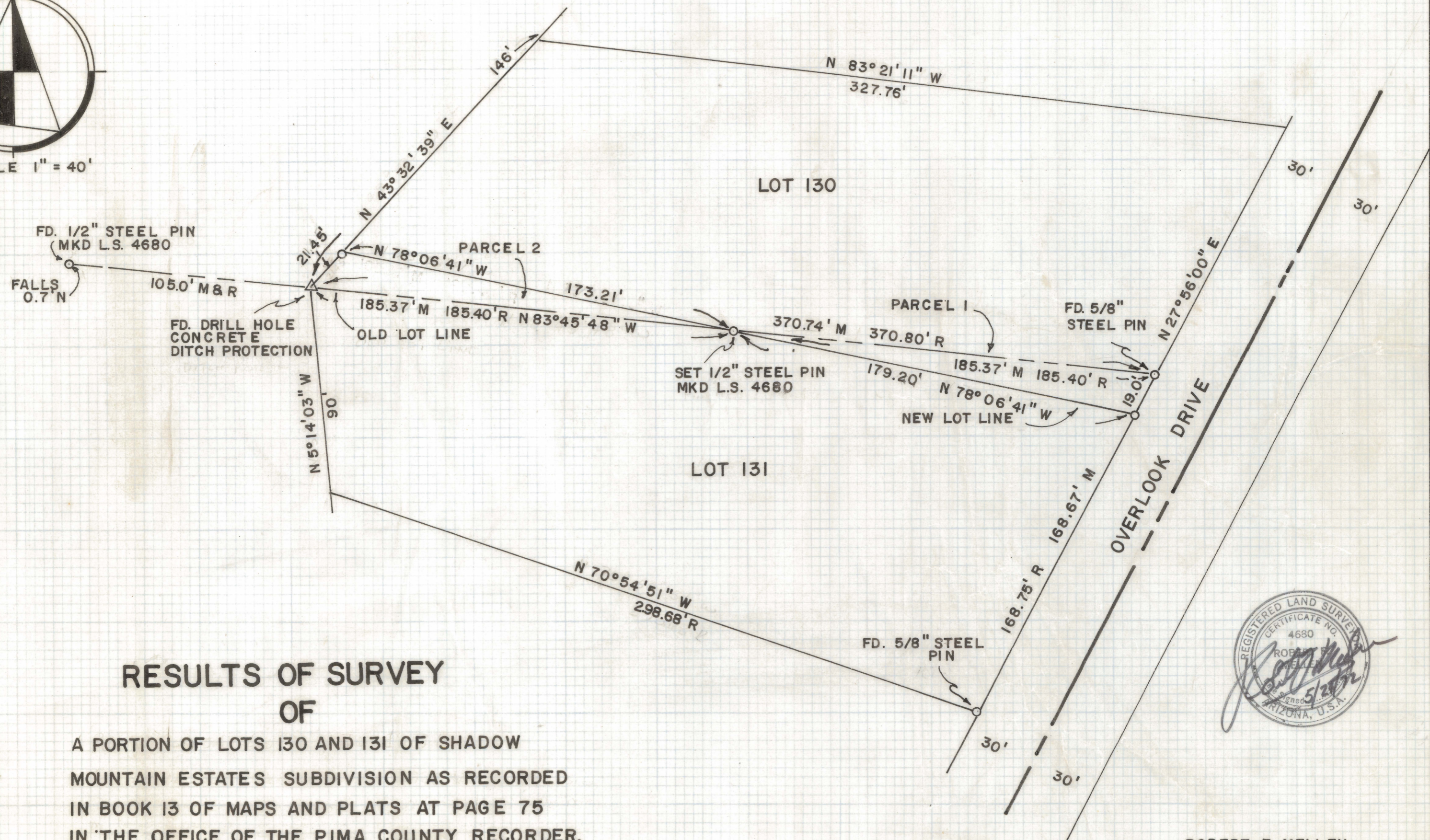
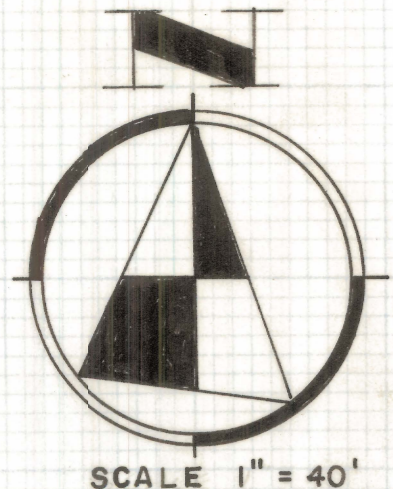


DISCLAIMER:

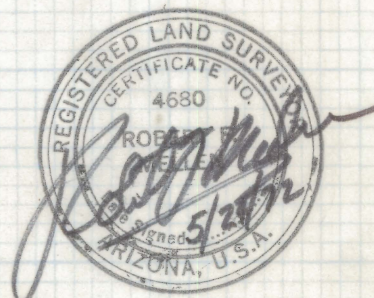
This unrecorded Record of Survey was donated to the City of Tucson. The City of Tucson provides this data for your personal use "as is." Additionally, the City of Tucson provides this information with the understanding that it is not guaranteed to be accurate, correct or complete and conclusions drawn from such information are the responsibility of the user.



**RESULTS OF SURVEY
OF**

A PORTION OF LOTS 130 AND 131 OF SHADOW MOUNTAIN ESTATES SUBDIVISION AS RECORDED IN BOOK 13 OF MAPS AND PLATS AT PAGE 75 IN THE OFFICE OF THE PIMA COUNTY RECORDER, PIMA COUNTY, ARIZONA

M = MEASURED
R = RECORD



ROBERT F. MELLEN
REGISTERED LAND SURVEYOR
TUCSON, ARIZONA

JOB # 72-68 IM

Z-2020-142