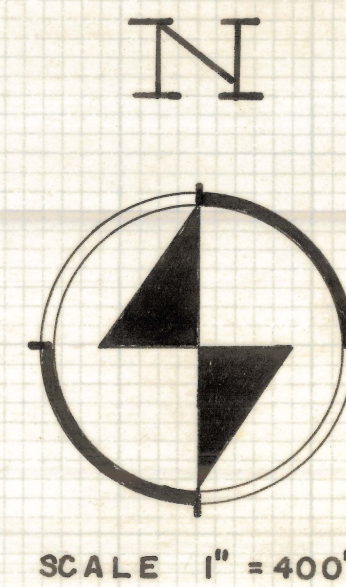
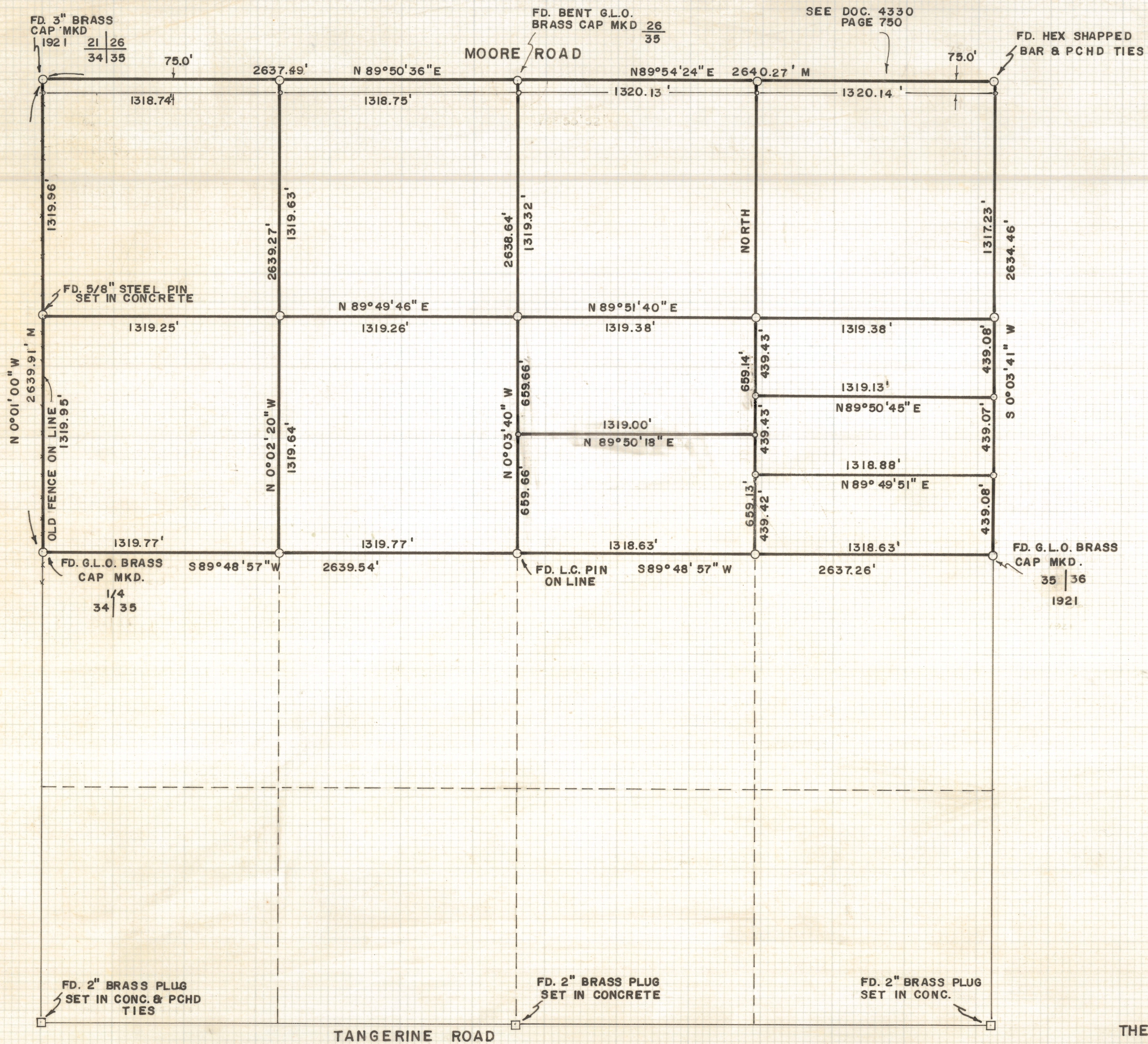


DISCLAIMER:

This unrecorded Record of Survey was donated to the City of Tucson. The City of Tucson provides this data for your personal use "as is." Additionally, the City of Tucson provides this information with the understanding that it is not guaranteed to be accurate, correct or complete and conclusions drawn from such information are the responsibility of the user.



RESULTS OF SURVEY OF

THE NORTH ONE-HALF OF SECTION THIRTY-FIVE, TOWNSHIP ELEVEN SOUTH OF RANGE THIRTEEN EAST, GILA AND SALT RIVER BASE AND MERIDIAN, PIMA COUNTY, ARIZONA

NOTES

- (1) A 5/8" ALUMINIUM CAP PIN WAS SET ALONG SIDE THE NORTH 1/4 CORNER 6" DEEP TO PRESERVE SAID CORNER
- (2) L.C. PIN - LEAD CAPPED PIN
- (3) 5/8" STEEL PIN ARE ALSO SET 75.0' SOUTH OF THE NORTH SECTION LINE FOR EACH 40 ACRE PARCEL
- (4) BASIS OF BEARINGS G.L.O. PLAT OF TWP. 11 S., R. 13 E. SHOWING WEST LINE OF SECTION 35 AS N 0°01' W

ROBERT F. MELLEN
REGISTERED LAND SURVEYOR
TUCSON, ARIZONA

JOB # 72-140
REVISED JOB # 73-82 (SW 1/4 NE 1/4)

Z-2020-143

1 M

12