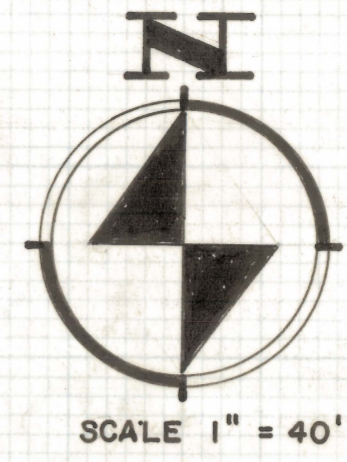


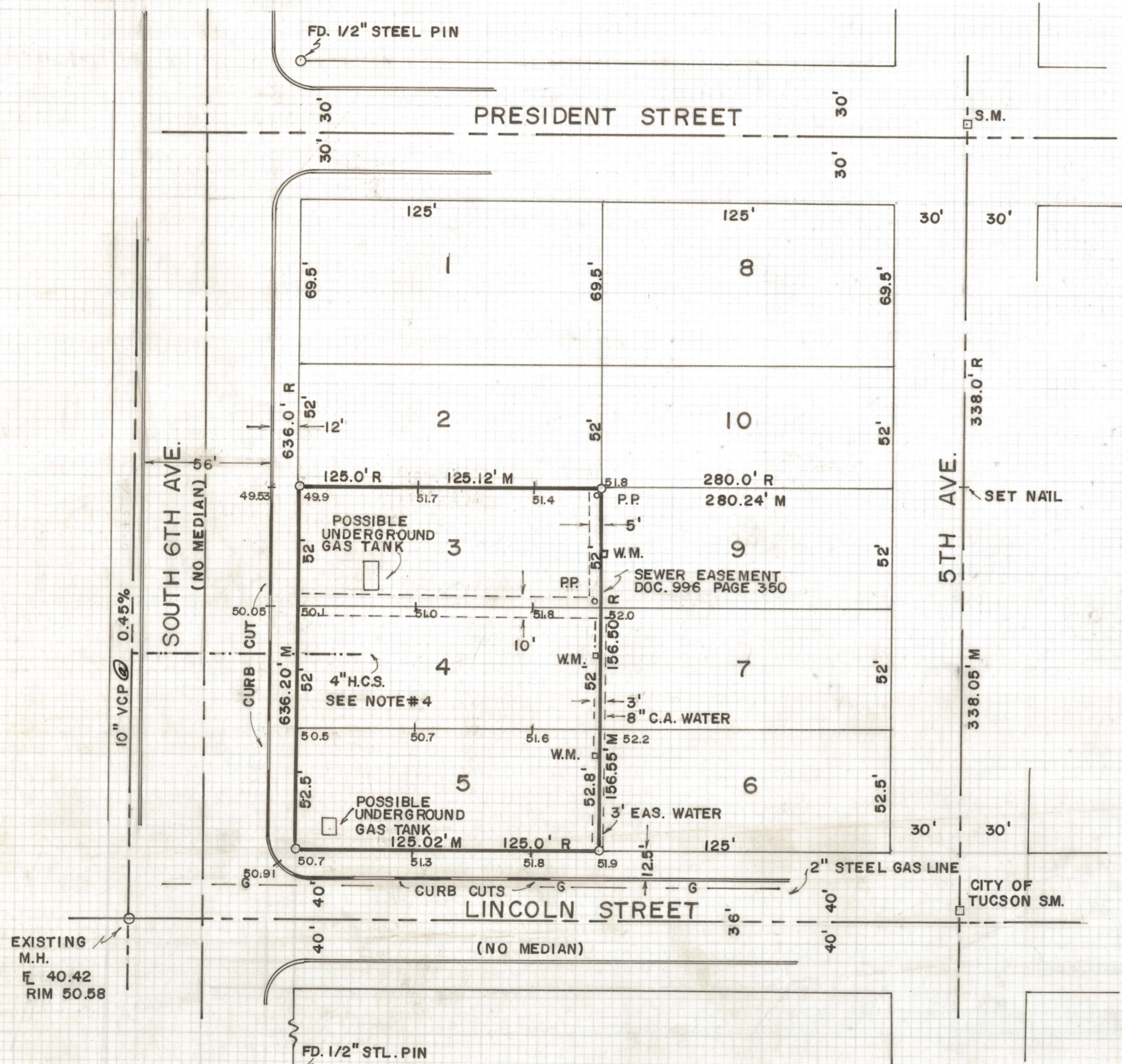
DISCLAIMER:

This unrecorded Record of Survey was donated to the City of Tucson. The City of Tucson provides this data for your personal use "as is." Additionally, the City of Tucson provides this information with the understanding that it is not guaranteed to be accurate, correct or complete and conclusions drawn from such information are the responsibility of the user.



RESULTS OF SURVEY OF

LOTS 3, 4 & 5 OF BLOCK 6, SUPPLEMENTAL
MAP OF AMENDED GOVERNMENT HEIGHTS
SUBDIVISION NO. 2 AS RECORDED IN BOOK 5
OF MAPS & PLATS AT PAGE 65 IN THE
OFFICE OF THE PIMA COUNTY RECORDER,
PIMA COUNTY, ARIZONA



NW COR.
LOT 3 BLK 16

NOTES

- (1) THIS AREA APPEARS TO BE AN
OLD ENCO SERVICE STATION
- (2) RR - POWER POLE
- (3) W.M. - WATER METER
- (4) LOCATION NOT VERIFIED
(OLD KELLY OIL CO. STATION)



ROBERT F. MELLEN
REGISTERED LAND SURVEYOR
TUCSON, ARIZONA

JOB # 72-162

IM