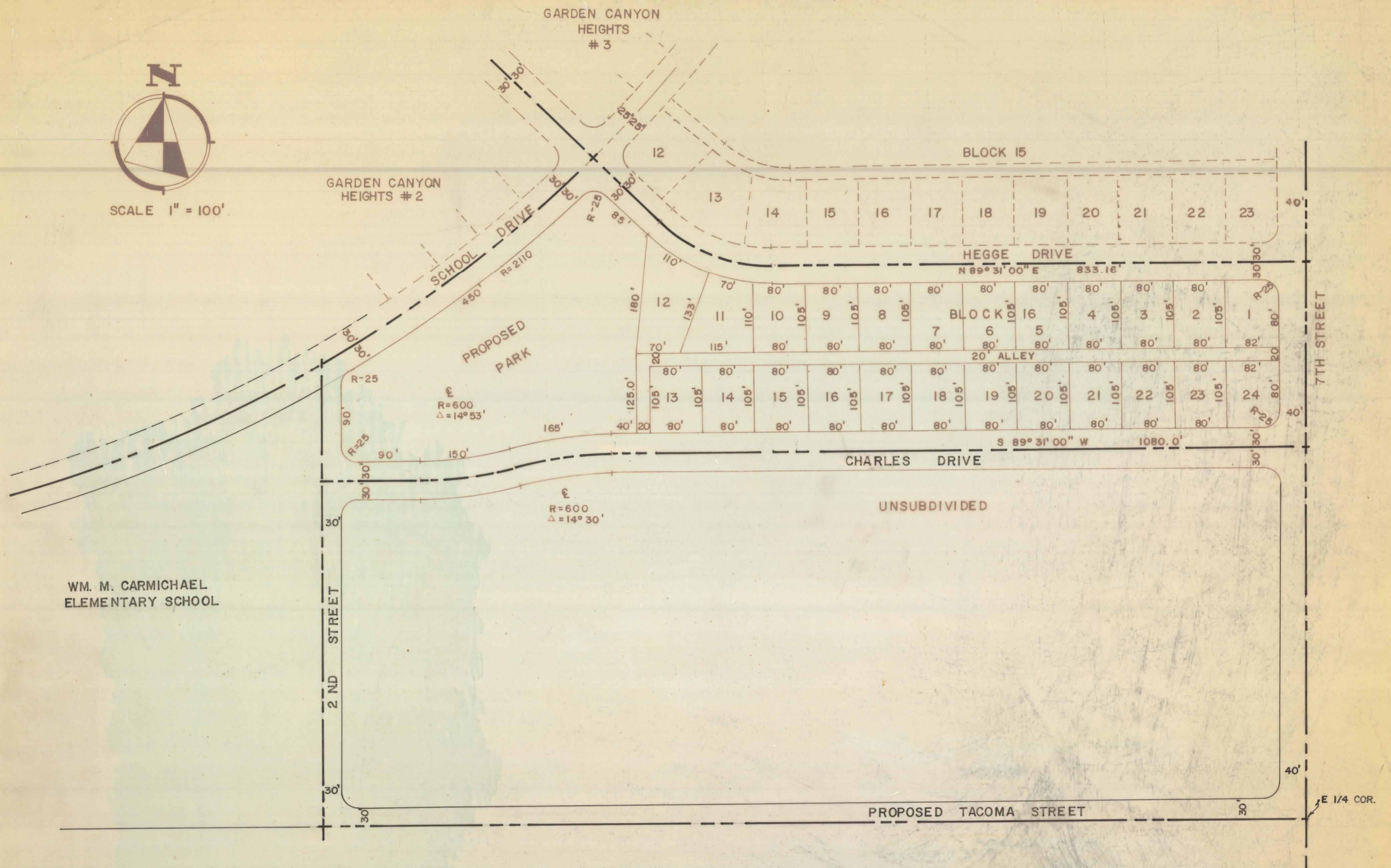


# **DISCLAIMER:**

**This unrecorded Record of Survey was donated to the City of Tucson. The City of Tucson provides this data for your personal use "as is." Additionally, the City of Tucson provides this information with the understanding that it is not guaranteed to be accurate, correct or complete and conclusions drawn from such information are the responsibility of the user.**



SCALE 1" = 100'



WM. M. CARMICHAEL  
ELEMENTARY SCHOOL

NOTES

- (1) GROSS ACREAGE 10.8 ACRES
- (2) MILES OF NEW STREETS 60' R/W - 0.3
- (3) MILES OF NEW STREETS 30' R/W - 0.20
- (4) AREA OF PROPOSED PARK - 2.8
- (5) MINIMUM LOT AREA - 8,400
- (6) RADIUS AT RETURNS - 25'

PROPOSED ADDITION  
TO

GARDEN CANYON HEIGHTS  
STRATCOM VILLAGE  
BLOCK 16 - LOTS 1 THRU 24

BEING A SUBDIVISION OF PART OF THE NORTHEAST  
QUARTER OF SECTION 34, TOWNSHIP 21 SOUTH, RANGE  
20 EAST, GILA AND SALT RIVER BASE AND MERIDIAN,  
COCHISE COUNTY, ARIZONA

ROBERT F. MELLEN  
REGISTERED LAND SURVEYOR  
TUCSON, ARIZONA