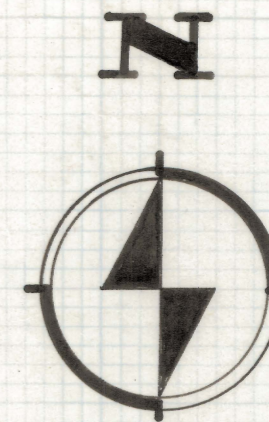


DISCLAIMER:

This unrecorded Record of Survey was donated to the City of Tucson. The City of Tucson provides this data for your personal use "as is." Additionally, the City of Tucson provides this information with the understanding that it is not guaranteed to be accurate, correct or complete and conclusions drawn from such information are the responsibility of the user.

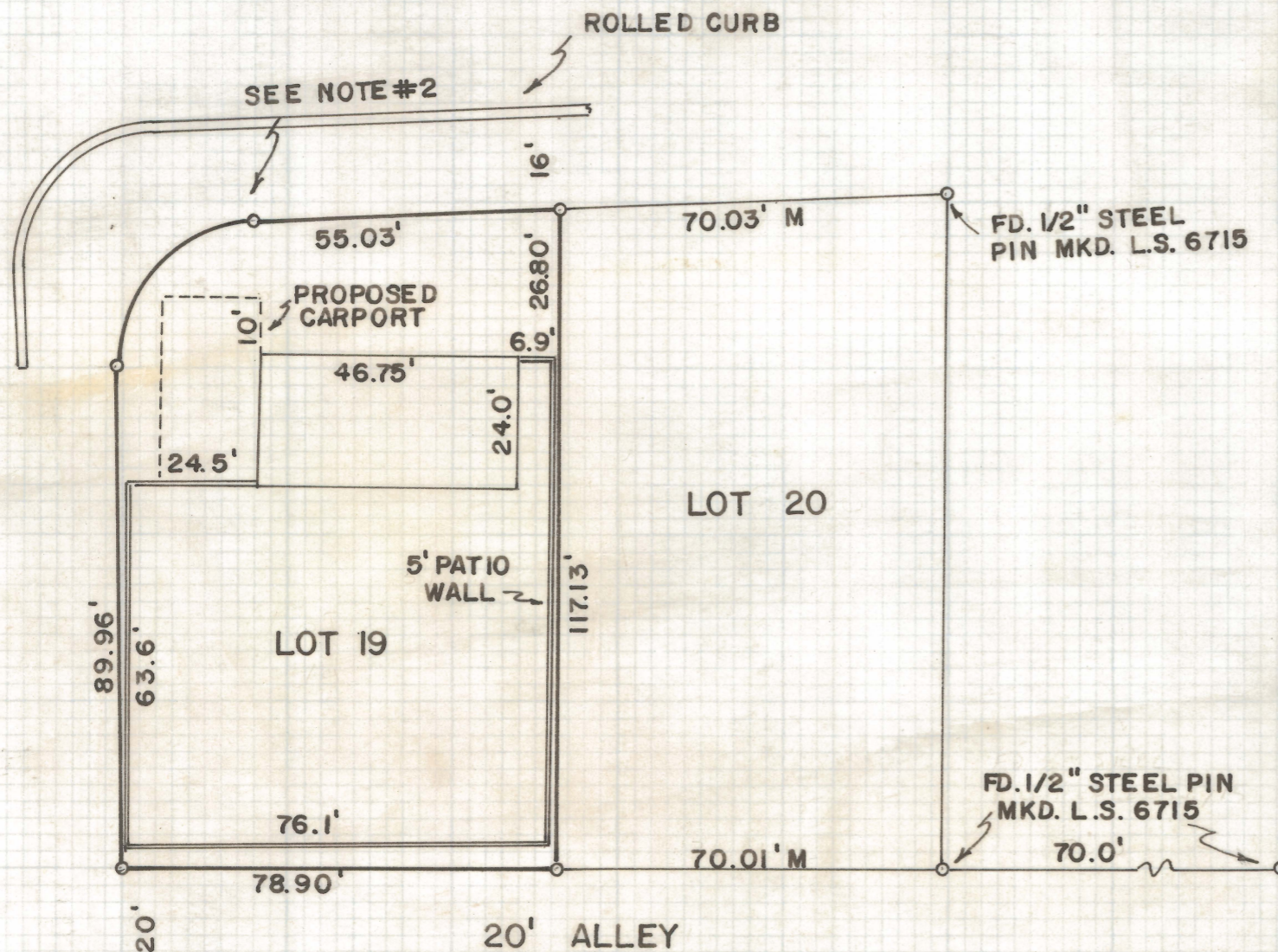


SCALE 1" = 30'

FREEWAY I-19

PINTA AVE.

DREXEL ROAD



RESULTS OF SURVEY OF

LOT 19, BLOCK 32 OF MISSION MANOR
#7 SUBDIVISION AS RECORDED IN BOOK
10 OF MAPS AND PLATS AT PAGE 20
IN THE OFFICE OF THE PIMA COUNTY
RECORDER, PIMA COUNTY, ARIZONA

NOTES

- (1) INDICATES 5/8" AL. CAPPED
PIN SET MKD. L.S. 4680
- (2) FD. 1/2" STEEL PIN NOT MKD. (BENT)
RESET 5/8" ACP

ROBERT F. MELLEN
REGISTERED LAND SURVEYOR
TUCSON, ARIZONA

JOB # 73-32

IM

Z-2020-153

2