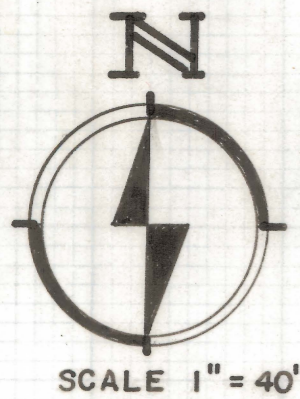
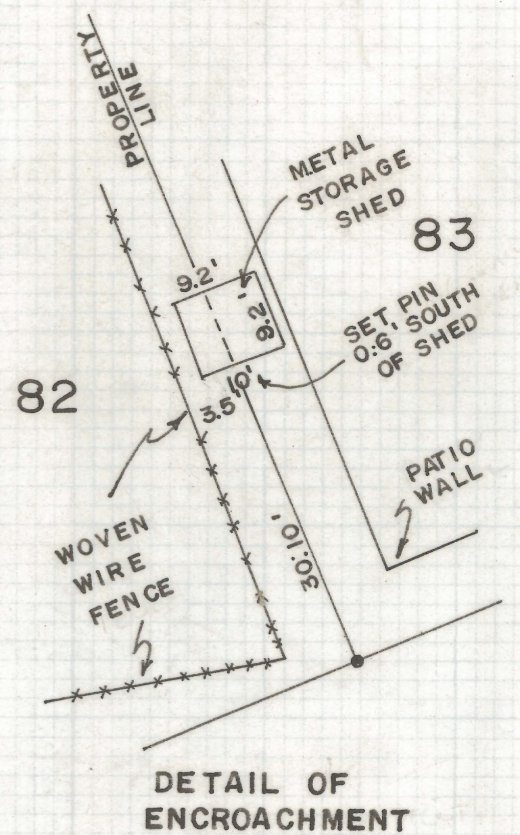
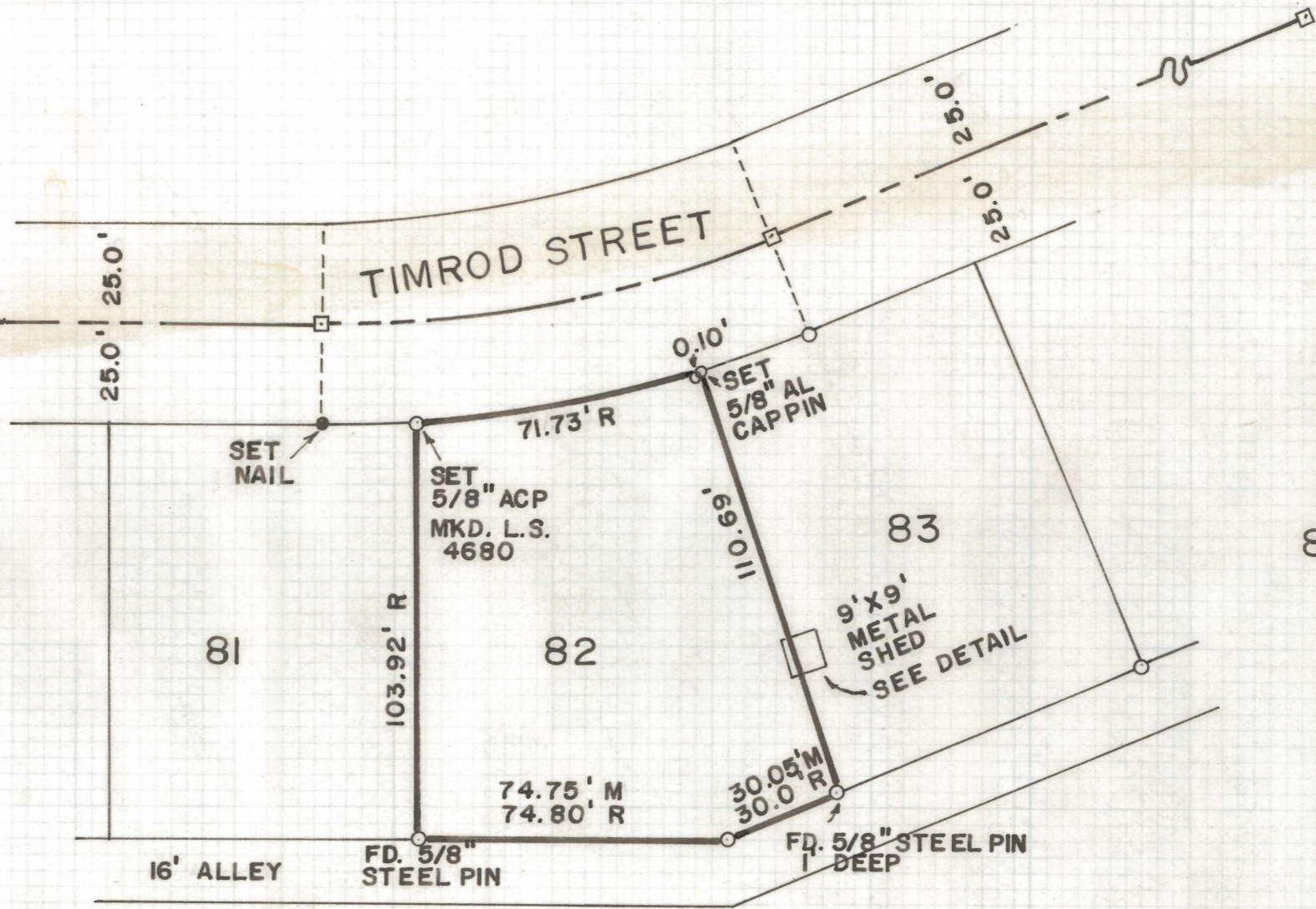


# **DISCLAIMER:**

**This unrecorded Record of Survey was donated to the City of Tucson. The City of Tucson provides this data for your personal use "as is." Additionally, the City of Tucson provides this information with the understanding that it is not guaranteed to be accurate, correct or complete and conclusions drawn from such information are the responsibility of the user.**



SCALE 1" = 40'



## RESULTS OF SURVEY OF

LOT 82 OF SHERWOOD VILLAGE TERRACE  
 SUBDIVISION AS RECORDED IN BOOK 13 OF  
 MAPS AND PLATS AT PAGE 100 IN THE  
 OFFICE OF THE PIMA COUNTY, PIMA COUNTY,  
 ARIZONA

- INDICATES 5/8" AL. CAP PIN FOUND MARKED L.S. 7490 UNLESS NOTED
- ⊠ INDICATES STANDARD CITY OF TUCSON SURVEY MONUMENT

ROBERT F. MELLEN  
 REGISTERED LAND SURVEYOR  
 TUCSON, ARIZONA

JOB # 73-30

IM

CLEARPRINT

Z-2020-154

2