

# **DISCLAIMER:**

**This unrecorded Record of Survey was donated to the City of Tucson. The City of Tucson provides this data for your personal use "as is." Additionally, the City of Tucson provides this information with the understanding that it is not guaranteed to be accurate, correct or complete and conclusions drawn from such information are the responsibility of the user.**

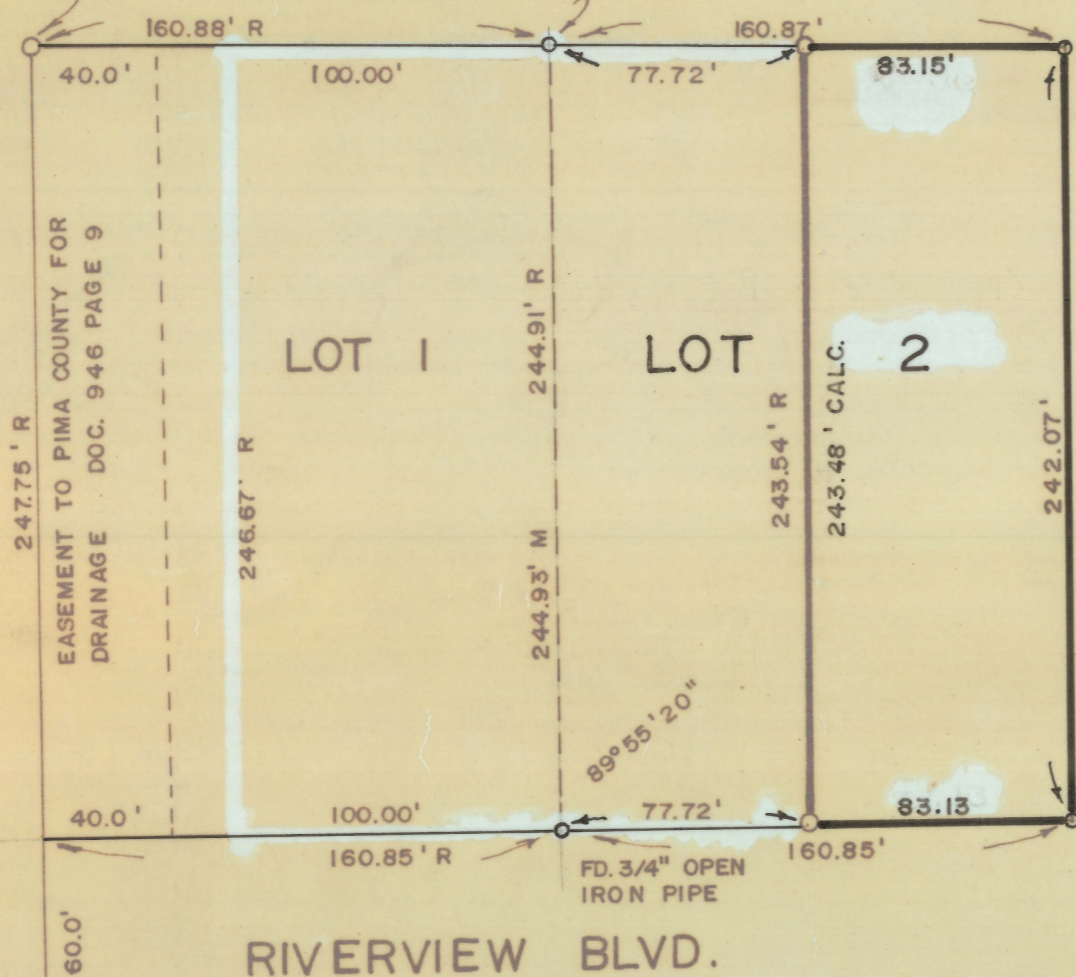




FD. 5/8" STEEL PIN

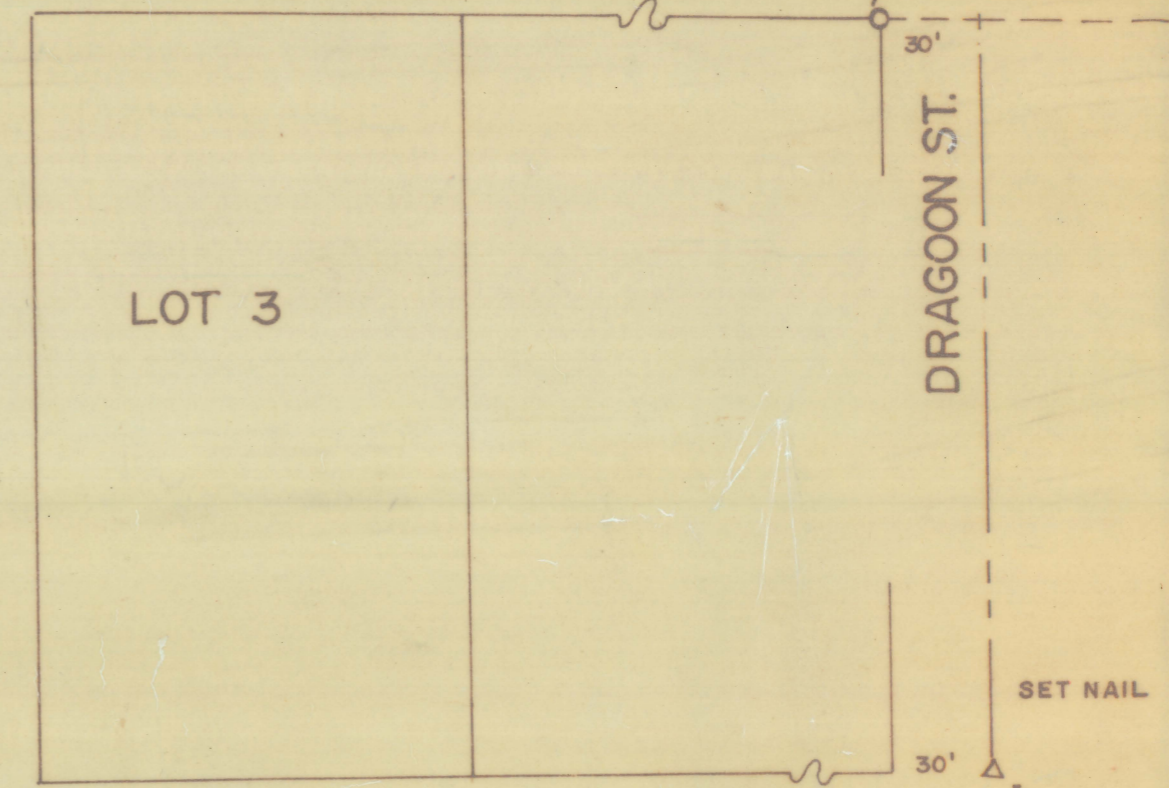
FD. 3/4" OPEN IRON PIPE

FD. 3/4" OPEN IRON PIPE



60.0'

HUACHUCA ST.



60.0'

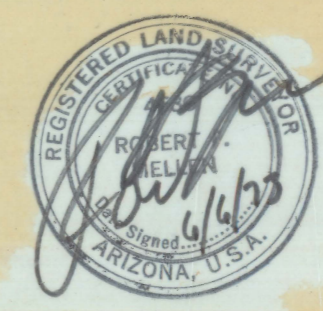
SET NAIL

CITY OF TUCSON

300'

### RESULTS OF SURVEY OF

ALL OF LOT 2 OF EL RIO SUBDIVISION AS RECORDED IN BOOK 6 OF MAPS AND PLATS AT PAGE II IN THE OFFICE OF THE PIMA COUNTY RECORDER, PIMA COUNTY, ARIZONA, EXCEPT THE WEST 77.72 FEET THEREOF.



ROBERT F. MELLEN  
REGISTERED LAND SURVEYOR  
TUCSON, ARIZONA

JOB #73-87

M - MEASURED DISTANCE  
R - MAP RECORD  
○ INDICATES 5/8" STEEL PIN SET MKD. L.S. 4680 UNLESS NOTED

Z-2020-155