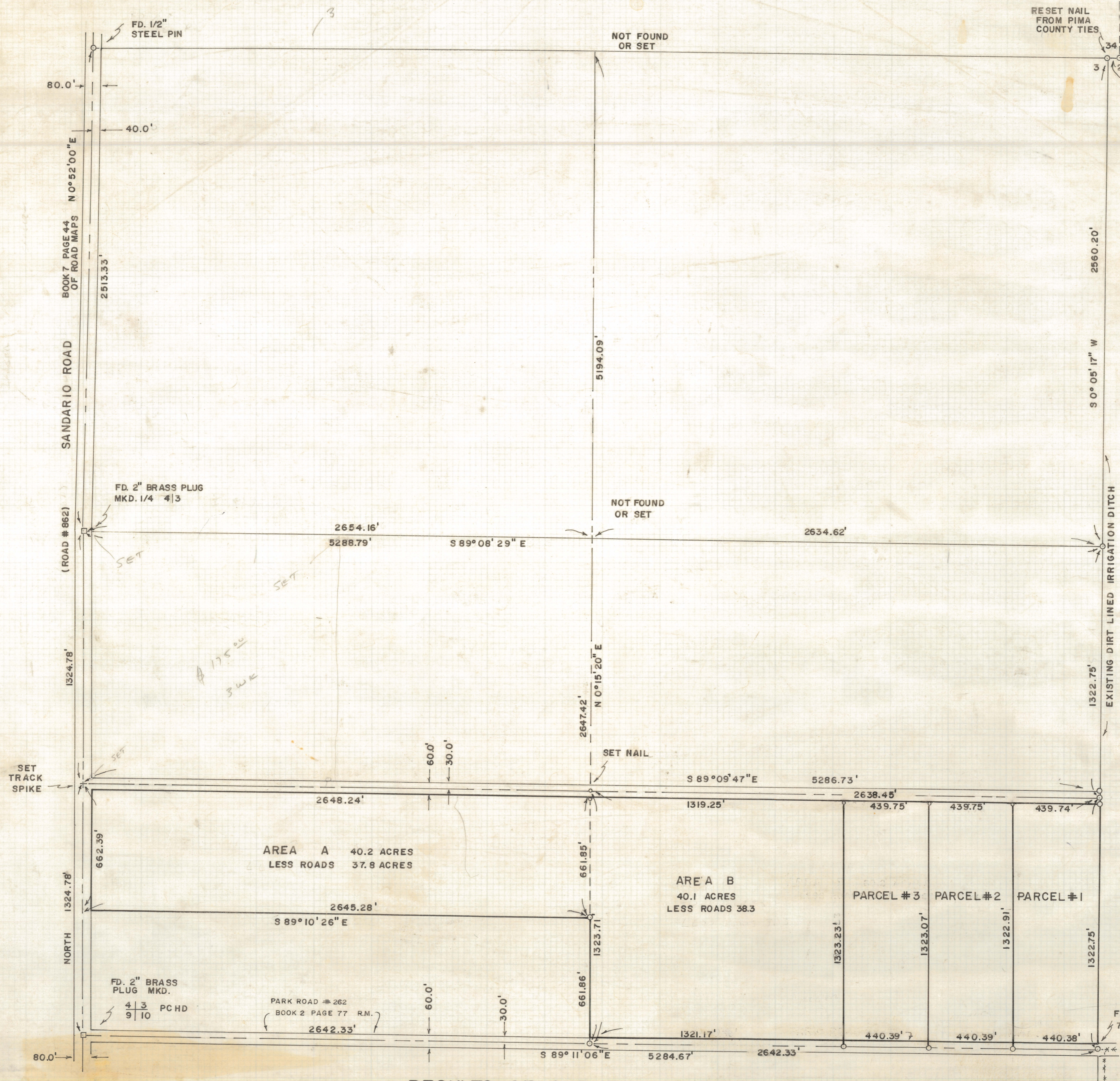
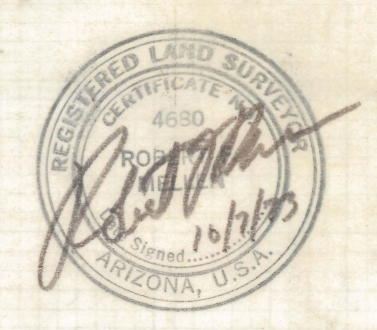


# **DISCLAIMER:**

**This unrecorded Record of Survey was donated to the City of Tucson. The City of Tucson provides this data for your personal use "as is." Additionally, the City of Tucson provides this information with the understanding that it is not guaranteed to be accurate, correct or complete and conclusions drawn from such information are the responsibility of the user.**

RESET NAIL FROM PIMA COUNTY TIES  
 34 35  
 3 2  
 37.05'



**RESULTS OF SURVEY**

- NOTES**
- (1) INDICATES 1/2" STEEL PIN SET MKD. L.S. 4680 UNLESS NOTED
  - (2) ACREAGE TO THE NEAREST 0.10 ACRE
  - (3) ALL DISTANCES TO CENTER LINE OF ROADS
  - (4) NORTH PINS PARCELS 1, 2, 3 AND AREA B SET 37.0 FEET SOUTH OF PROPERTY LINE

OF A PORTION OF THE SOUTH ONE HALF OF THE SOUTH ONE HALF OF SECTION THREE, TOWNSHIP FIFTEEN SOUTH OF RANGE ELEVEN EAST, GILA AND SALT RIVER BASE AND MERIDIAN, PIMA COUNTY, ARIZONA

REVISED 12/16/73 EAST 40 ACRES  
 ROBERT F. MELLEN  
 REGISTERED LAND SURVEYOR  
 TUCSON, ARIZONA  
 JOB #73-145