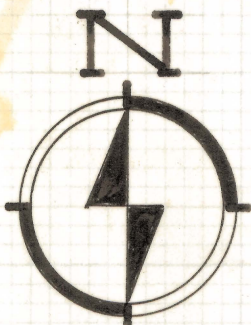
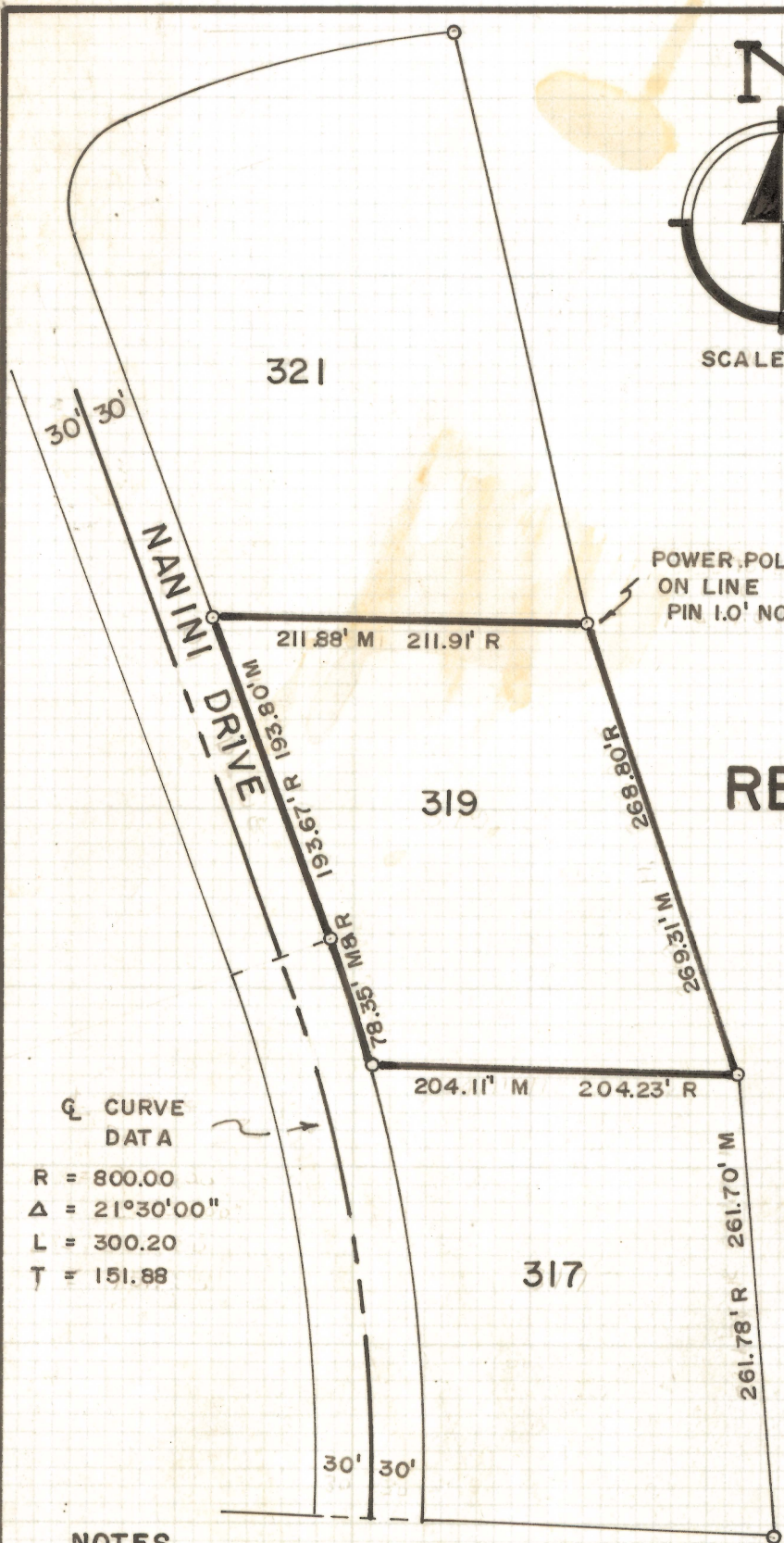
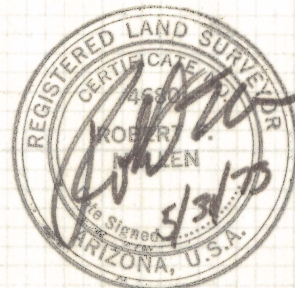


DISCLAIMER:

This unrecorded Record of Survey was donated to the City of Tucson. The City of Tucson provides this data for your personal use "as is." Additionally, the City of Tucson provides this information with the understanding that it is not guaranteed to be accurate, correct or complete and conclusions drawn from such information are the responsibility of the user.



SCALE 1" = 100'




RESULTS OF SURVEY OF

LOT 319 CASAS ADOBES
ESTATES NO. 3-A AS RECORD-
ED IN BOOK 10 OF MAPS AND
PLATS AT PAGE 54 IN THE
OFFICE OF THE PIMA COUNTY
RECORDER, PIMA COUNTY,
ARIZONA

Q CURVE DATA

R = 800.00
Δ = 21°30'00"
L = 300.20
T = 151.88

NOTES

- (1) M = MEASURED DISTANCE
- (2) R = MAP RECORD
- (3)  INDICATES 5/8" STEEL PIN FOUND

ROBERT F. MELLEN
REGISTERED LAND SURVEYOR
TUCSON, ARIZONA
JOB #73-56

IM

Z-2020-165