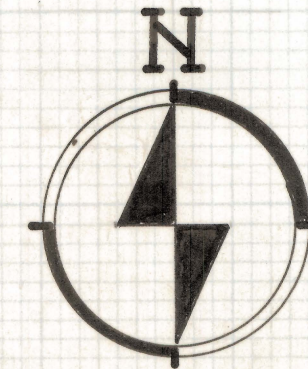


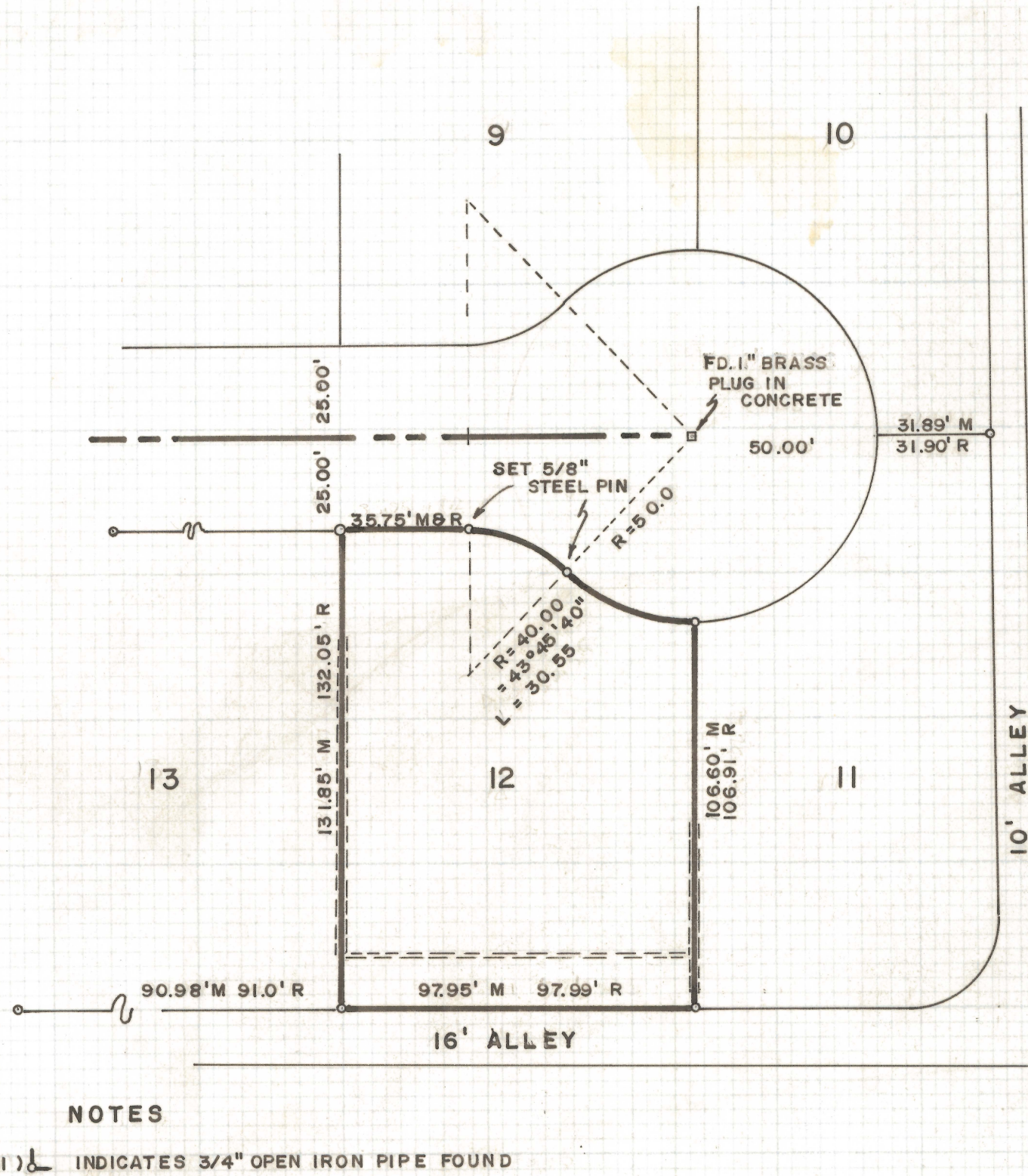
# **DISCLAIMER:**

**This unrecorded Record of Survey was donated to the City of Tucson. The City of Tucson provides this data for your personal use "as is." Additionally, the City of Tucson provides this information with the understanding that it is not guaranteed to be accurate, correct or complete and conclusions drawn from such information are the responsibility of the user.**





SCALE 1" = 40'



## RESULTS OF SURVEY OF

LOT TWELVE OF HAWTHORNE PARK  
SUBDIVISION AS RECORDED IN BOOK  
12 OF MAPS AND PLATS AT PAGE 18  
IN THE OFFICE OF THE PIMA COUNTY  
RECORDER, PIMA COUNTY, ARIZONA

### NOTES

- (1) INDICATES 3/4" OPEN IRON PIPE FOUND UNLESS NOTED
- (2) M = MEASURED DISTANCE
- (3) R = MAP RECORD
- (4) INDICATES PATIO WALLS BUILT ON LINE
- (5) REAR PATIO WALL

ROBERT F. MELLEN  
REGISTERED LAND SURVEYOR  
TUCSON, ARIZONA

JOB # 73-44

IM

168  
Z-2020-168

3