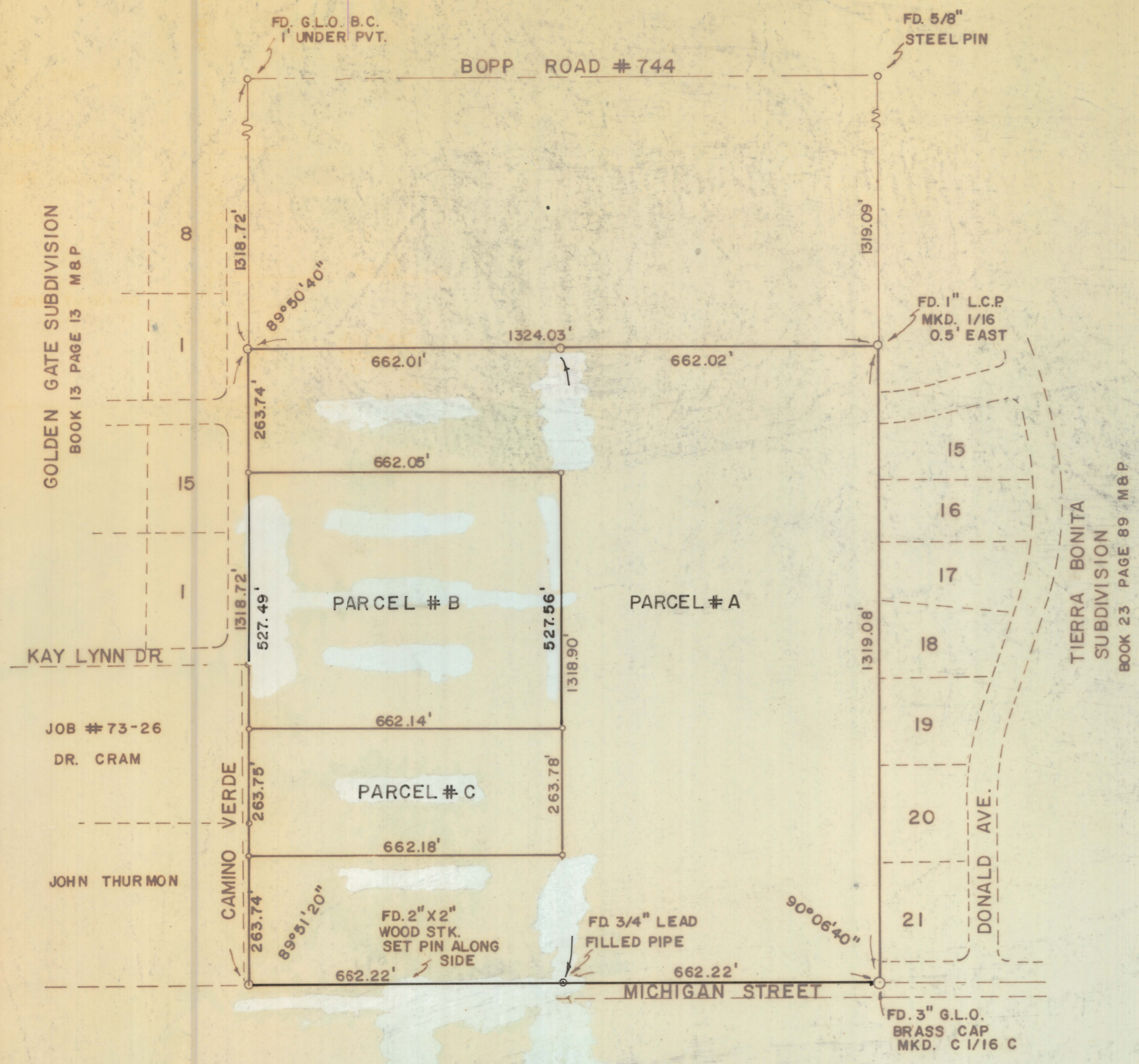


# **DISCLAIMER:**

**This unrecorded Record of Survey was donated to the City of Tucson. The City of Tucson provides this data for your personal use "as is." Additionally, the City of Tucson provides this information with the understanding that it is not guaranteed to be accurate, correct or complete and conclusions drawn from such information are the responsibility of the user.**



RESULTS OF SURVEY  
OF  
PART OF THE EAST ONE-HALF OF SECTION  
THIRTY-FOUR, TOWNSHIP FOURTEEN SOUTH OF  
RANGE TWELVE EAST, GILA AND SALT RIVER  
BASE AND MERIDIAN, PIMA COUNTY, ARIZONA

○ INDICATES 5/8" STEEL PIN  
SET MKD. L.S. 4680 UNLESS  
NOTED

ROBERT F. MELLEN  
REGISTERED LAND SURVEYOR  
TUCSON, ARIZONA  
JOB # 73-81

REVISION OF JOB # 73-41

Z-2020-170