

DISCLAIMER:

This unrecorded Record of Survey was donated to the City of Tucson. The City of Tucson provides this data for your personal use "as is." Additionally, the City of Tucson provides this information with the understanding that it is not guaranteed to be accurate, correct or complete and conclusions drawn from such information are the responsibility of the user.

FD. 6LO
BRASS CAP
MKD.

29 | 28
32 | 33

N 89° 50' 05" W

2636.23'

FD. 6LO
BRASS CAP
MKD 1/4

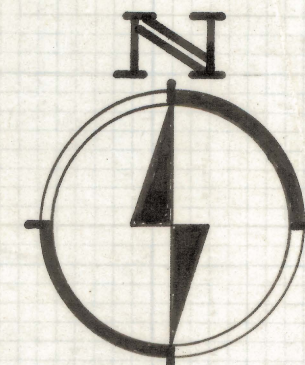
28
33

S 89° 51' 44" W

2639.23'

150.0'

FD. 2" BRASS
CAP SET IN
CONCRETE



SCALE 1" = 500'

NW 1/4
NW 1/4

NE 1/4
NW 1/4

NW 1/4
NE 1/4

NE 1/4
NE 1/4

2643.72'

SW 1/4
NW 1/4

SE 1/4
NW 1/4

SW 1/4
NE 1/4

SE 1/4
NE 1/4

N 0° 07' 37" W

2636.11'

FD. 6LO
BRASS CAP
MKD. 1/4
32 | 33

EAST 5271.71'

2635.60'

FD. 2" BRASS
CAP IN CONC.

3300.37'

LOT 4

LOT 3

LOT 2

LOT 1

5943.15'

S 0° 08' 45" E

LOT 5

LOT 6

LOT 7

LOT 8

N 0° 07' 30" W

FD. 6LO
BRASS CAP MKD
32 | 33
5 | 4

LOT 11

LOT 10

LOT 9

N 89° 51' 19" W

5269.84'

75.0'

SANDARIO ROAD

(BOOK 8 PAGE 18 ROAD MAPS)



SET NAIL
FROM PCHD
TIES

RESULTS OF SURVEY OF

NOTES

- (1) — INDICATES 5/8" STEEL PIN
MKD. L.S. 4680 SET UNLESS
NOTED
- (2) L.C.P. - LEAD CAP PIPE
- (3) — INDICATES NAIL SET
- (4) INTERIOR DISTANCES OF
ARE TO CENTERLINE OF
EXISTING ROAD

ROBERT F. MELLEN
REGISTERED LAND SURVEYOR
TUCSON, ARIZONA
JOB # 73-

Z-2020-172-001

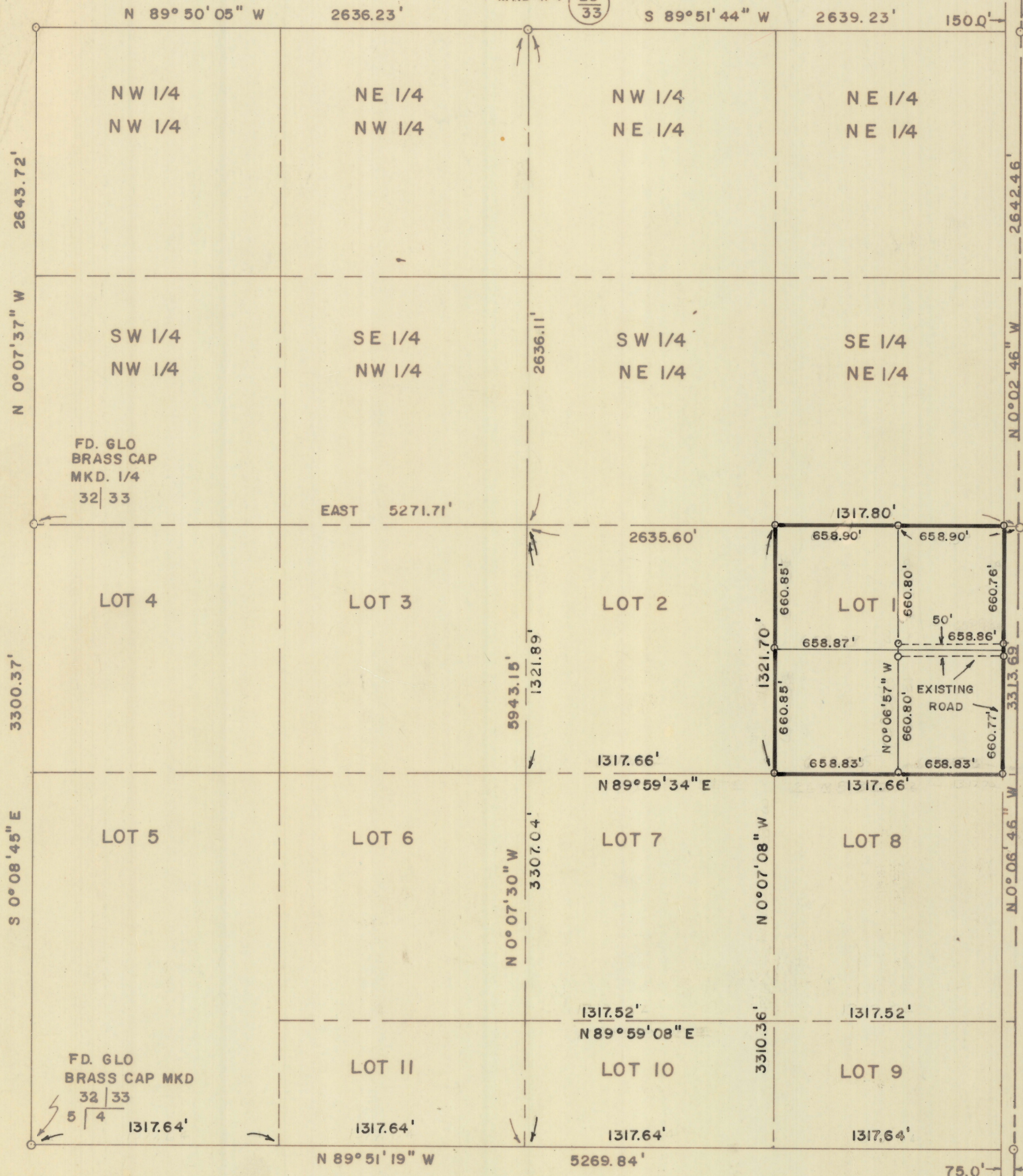
FD. 6LO
BRASS CAP
MKD.

29 | 28
32 | 33

FD. 6LO
BRASS CAP
MKD 1/4

28
33

FD. 2" BRASS
CAP SET IN
CONCRETE



(BOOK 8 PAGE 18 ROAD MAPS)

FD. 2" BRASS
CAP IN CONC.

SANDARIO ROAD

SET NAIL
FROM PCHD
TIES



RESULTS OF SURVEY OF

LOT ONE OF SECTION THIRTY-THREE, TOWNSHIP
TWELVE SOUTH, OF RANGE ELEVEN EAST, GILA
AND SALT RIVER BASE AND MERIDIAN, PIMA
COUNTY, ARIZONA

NOTES

- (1) — INDICATES 5/8" STEEL PIN
MKD. L.S. 4680 SET UNLESS
NOTED
- (2) L.C.P. - LEAD CAP PIPE
- (3) — INDICATES NAIL SET
- (4) INTERIOR DISTANCES OF LOT 1
ARE TO CENTERLINE OF
EXISTING ROADS

ROBERT F. MELLEN
REGISTERED LAND SURVEYOR
TUCSON, ARIZONA
JOB # 73-101

FD. 6LO
BRASS CAP
MKD.

29 | 28
32 | 33

N 89° 50' 05" W 2636.23'

FD. 6LO
BRASS CAP
MKD 1/4

28
33

S 89° 51' 44" W 2639.23'

FD. 2" BRASS
CAP SET IN
CONCRETE



SCALE 1" = 500'

NW 1/4
NW 1/4

NE 1/4
NW 1/4

NW 1/4
NE 1/4

NE 1/4
NE 1/4

2643.72'

N 0° 07' 37" W

SW 1/4
NW 1/4

SE 1/4
NW 1/4

SW 1/4
NE 1/4

SE 1/4
NE 1/4

FD. 6LO
BRASS CAP
MKD. 1/4
32 | 33

EAST 5271.71'

2635.60'

FD. 2" BRASS
CAP IN CONC.

LOT 4

LOT 3

LOT 2

LOT 1

3300.37'

S 0° 08' 45" E

LOT 5

LOT 6

LOT 7

LOT 8

5943.15'

N 0° 07' 30" W

FD. 6LO
BRASS CAP MKD
32 | 33
5 | 4

LOT 11

LOT 10

LOT 9

N 89° 51' 19" W

5269.84'

75.0'

SANDARIO ROAD

SET NAIL
FROM PCHD
TIES



NOTES

- (1) INDICATES 5/8" STEEL PIN MKD. L.S. 4680 SET UNLESS NOTED
- (2) L.C.P. - LEAD CAP PIPE
- (3) INDICATES NAIL SET
- (4) INTERIOR DISTANCES OF NE 1/4 NE 1/4 ARE TO CENTERLINE OF EXISTING ROADS

RESULTS OF SURVEY
OF

THE NORTHEAST QUARTER OF THE NORTHEAST
QUARTER OF SECTION THIRTY-THREE, TOWNSHIP
TWELVE SOUTH OF RANGE ELEVEN EAST, GILA
AND SALT RIVER BASE AND MERIDIAN, PIMA
COUNTY, ARIZONA

ROBERT F. MELLEN
REGISTERED LAND SURVEYOR
TUCSON, ARIZONA
JOB # 73-99

IM

Z-2020-172-004

FD. GLO
BRASS CAP
MKD.

FD. GLO
BRASS CAP
MKD 1/4

FD. 2" BRASS
CAP SET IN
CONCRETE

29 28
32 33

28
33

N 89° 50' 05" W 2636.23'

S 89° 51' 44" W 2639.23'

150.0'

NW 1/4
NW 1/4

NE 1/4
NW 1/4

NW 1/4
NE 1/4

NE 1/4
NE 1/4

2643.72'

SW 1/4
NW 1/4

SE 1/4
NW 1/4

SW 1/4
NE 1/4

SE 1/4
NE 1/4

N 0° 07' 37" W

2636.11'

2642.46'

FD. GLO
BRASS CAP
MKD. 1/4
32 | 33

EAST 5271.71'

1317.80'
2635.60'

FD. 2" BRASS
CAP IN CONC.

LOT 4

LOT 3

LOT 2

LOT 1

3300.37'

5943.15'

N 89° 59' 30" E

1317.66'

658.83'

658.83'

LOT 5

LOT 6

LOT 7

LOT 8

S 0° 08' 45" E

N 0° 07' 30" W

1321.70'
N 0° 07' 08" W

660.85'

660.85'

660.85'

660.85'

660.85'

50'
EXISTING
ROADS

FD. GLO
BRASS CAP MKD
32 | 33
5 | 4

LOT II

LOT 10

LOT 9

1317.52'
N 89° 59' 08" E

658.76'

658.76'

SANDARIO ROAD

SET NAIL
FROM PCHD
TIES

N 89° 51' 19" W

5269.84'

75.0'



SCALE 1" = 500'



RESULTS OF SURVEY OF

LOT 8 OF SECTION THIRTY-THREE, TOWNSHIP
TWELVE SOUTH OF RANGE ELEVEN EAST, GILA
AND SALT RIVER BASE AND MERIDIAN, PIMA
COUNTY, ARIZONA

NOTES

- (1) — INDICATES 5/8" STEEL PIN
MKD. L.S. 4680 SET UNLESS
NOTED
- (2) L.C.P. - LEAD CAP PIPE
- (3) — INDICATES NAIL SET
- (4) INTERIOR DISTANCES OF LOT 8
ARE TO CENTERLINE OF
EXISTING ROADS

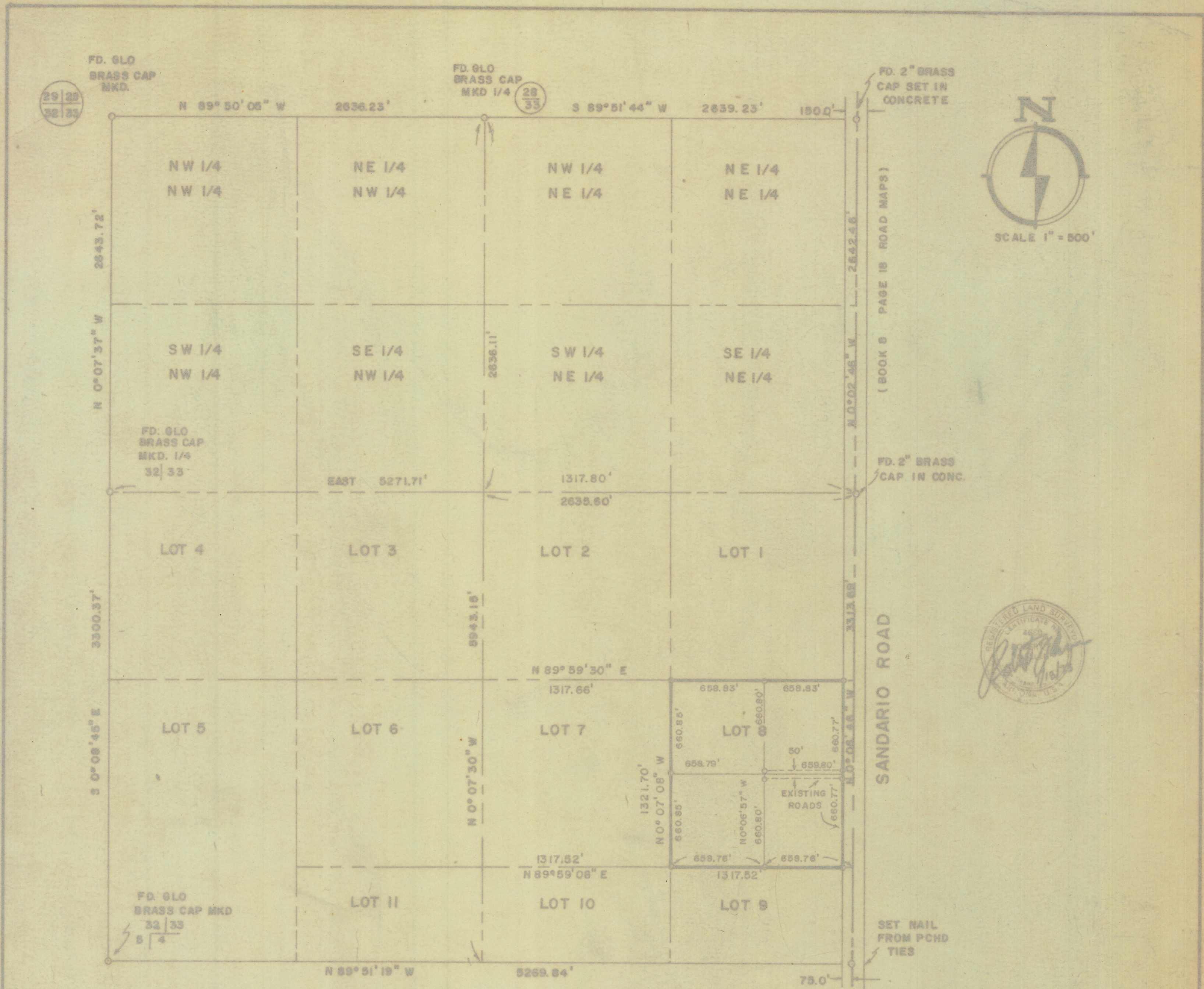
ROBERT F. MELLEN
REGISTERED LAND SURVEYOR
TUCSON, ARIZONA

JOB # 73- 102

IM

Z-2020-172-005

4 6



- NOTES**
- (1) INDICATES 5/8" STEEL PIN MKD. L.S. 4680 SET UNLESS NOTED
 - (2) L.C.P. - LEAD CAP PIPE
 - (3) INDICATES NAIL SET
 - (4) INTERIOR DISTANCES OF LOT 8 ARE TO CENTERLINE OF EXISTING ROADS

RESULTS OF SURVEY OF
LOT 8 OF SECTION THIRTY-THREE, TOWNSHIP
TWELVE SOUTH OF RANGE ELEVEN EAST, GILA
AND SALT RIVER BASE AND MERIDIAN, PIMA
COUNTY, ARIZONA

ROBERT F. MELLEN
 REGISTERED LAND SURVEYOR
 TUCSON, ARIZONA
 JOB # 73-102