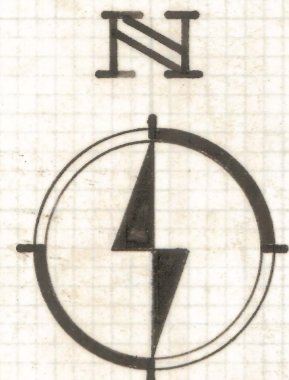


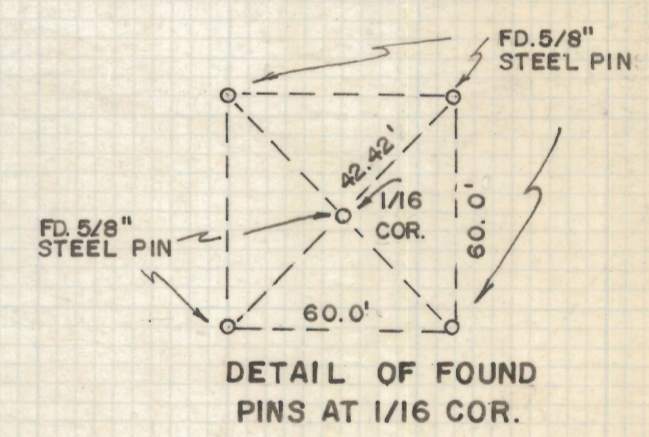
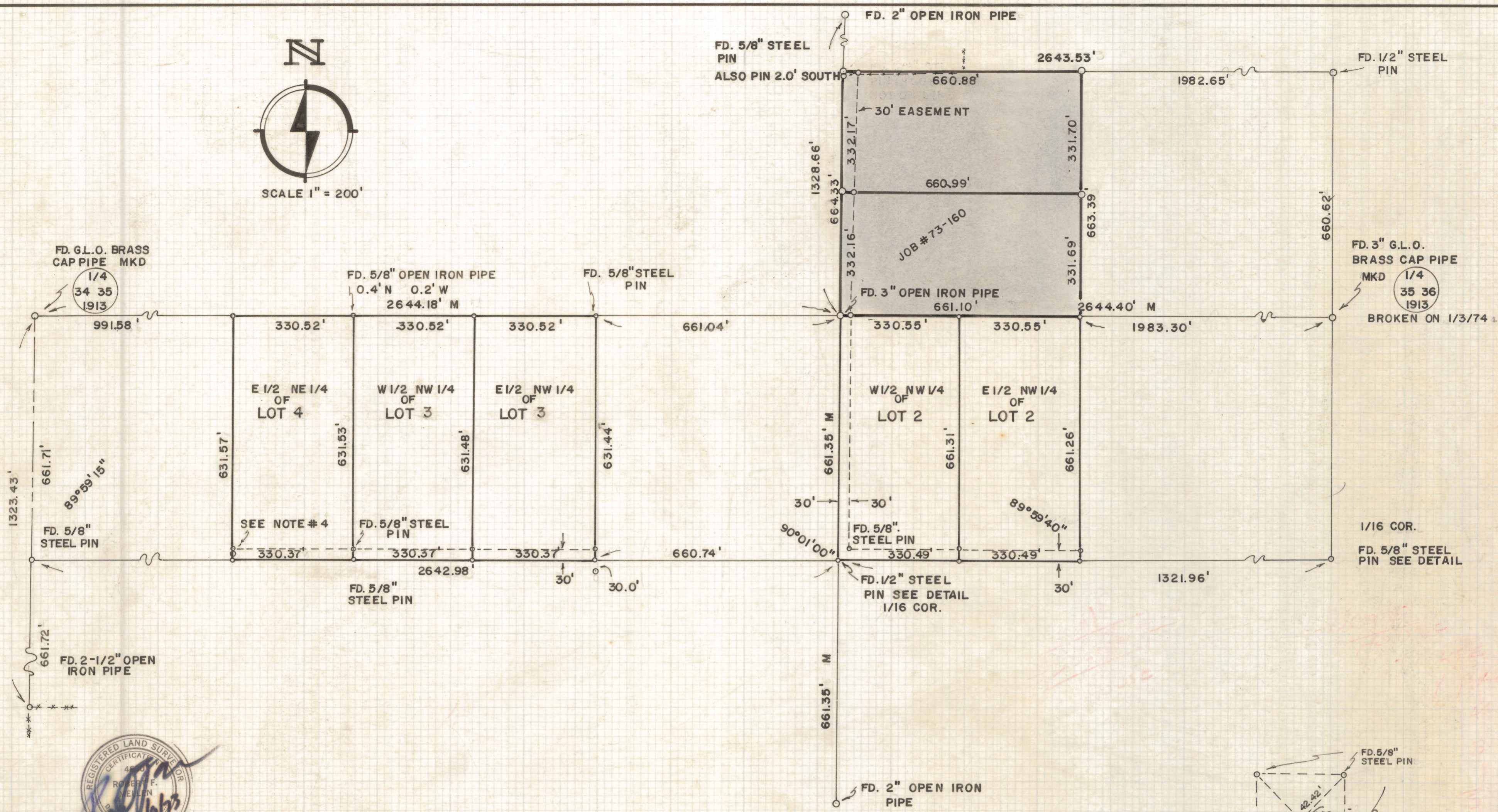
# **DISCLAIMER:**

**This unrecorded Record of Survey was donated to the City of Tucson. The City of Tucson provides this data for your personal use "as is." Additionally, the City of Tucson provides this information with the understanding that it is not guaranteed to be accurate, correct or complete and conclusions drawn from such information are the responsibility of the user.**





SCALE 1" = 200'



## RESULTS OF SURVEY OF

THE NORTHWEST QUARTER OF LOT 2, THE NORTHWEST QUARTER OF LOT 3 AND THE EAST ONE-HALF OF THE NORTHEAST QUARTER OF LOT 4 IN SECTION THIRTY-FIVE, TOWNSHIP TWELVE SOUTH OF RANGE ELEVEN EAST, GILA AND SALT RIVER BASE AND MERIDIAN, PIMA COUNTY, ARIZONA

### NOTES

- (1) INDICATES 5/8" STEEL PIN MKD. L.S. 4680 UNLESS NOTED
- (2) M. - MEASURED DISTANCE
- (3) R - MAP RECORD
- (4) THIS CORNER FALLS IN WASH SET REFERENCE CORNER 15.0' SOUTH

ROBERT F. MELLEN  
REGISTERED LAND SURVEYOR  
TUCSON, ARIZONA

REVISED 1/4/74 JOB # 73-160  
REVISED 4/10/74 JOB # 73-160  
EASEMENT

JOB # 73-27 IM

Z-2020-173