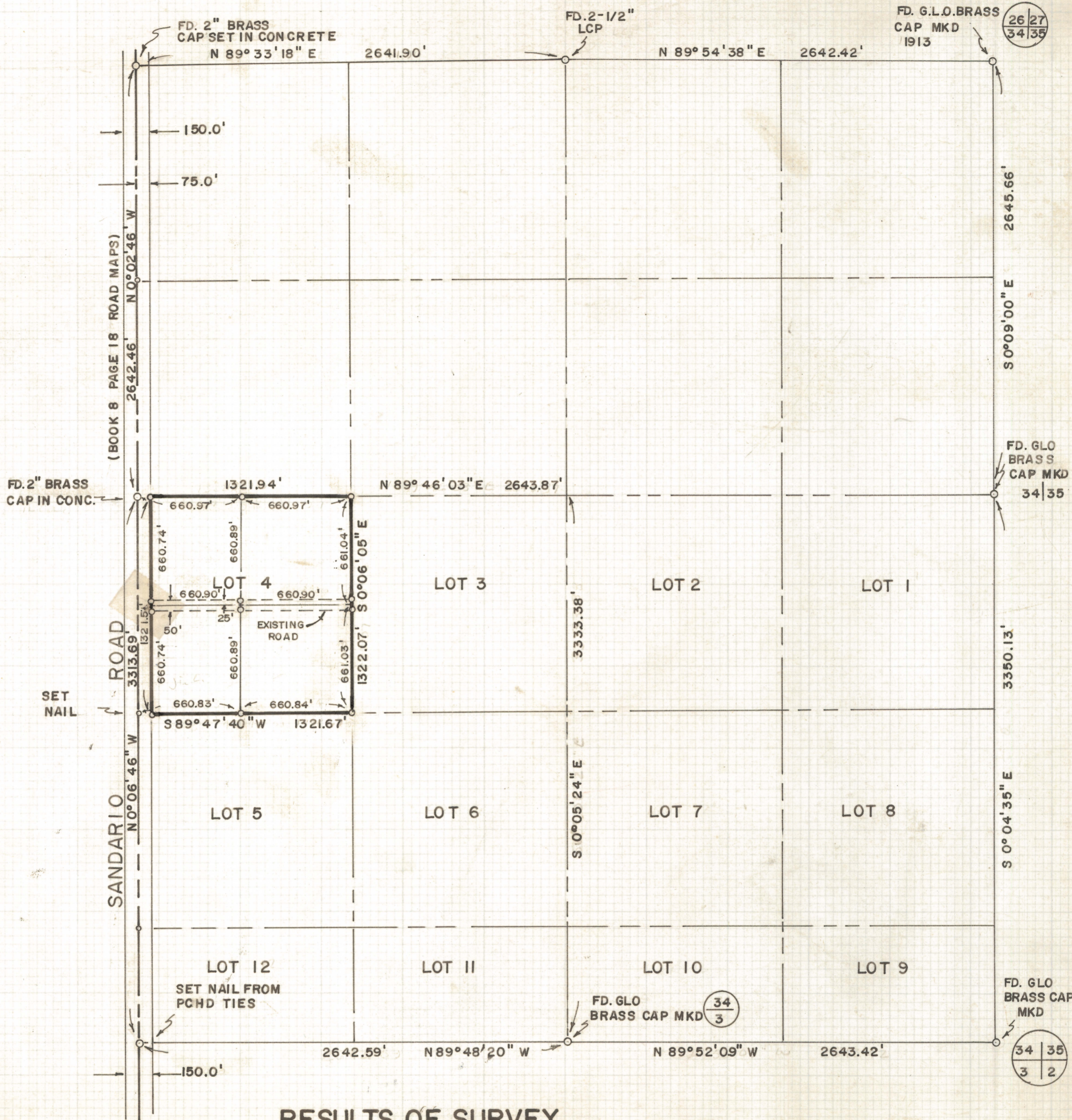
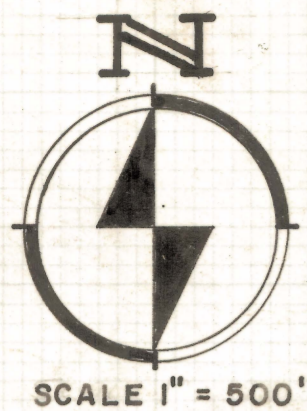


DISCLAIMER:

This unrecorded Record of Survey was donated to the City of Tucson. The City of Tucson provides this data for your personal use "as is." Additionally, the City of Tucson provides this information with the understanding that it is not guaranteed to be accurate, correct or complete and conclusions drawn from such information are the responsibility of the user.



- NOTES**
- (1) — INDICATES 5/8" STEEL PIN MKD. L.S. 4680 SET UNLESS NOTED
 - (2) — L.C.P. LEAD CAP PIPE
 - (3) — INDICATES NAIL SET
 - (4) — INTERIOR DISTANCES OF LOT 4 ARE TO CENTERLINE OF EXISTING ROAD S

RESULTS OF SURVEY OF

LOT FOUR OF SECTION THIRTY-FOUR, TOWNSHIP TWELVE SOUTH OF RANGE ELEVEN EAST, GILA AND SALT RIVER BASE AND MERIDIAN, PIMA COUNTY, ARIZONA

ROBERT F. MELLEN
REGISTERED LAND SURVEYOR
TUCSON, ARIZONA

JOB # 73-38 IM

Z-2020-174