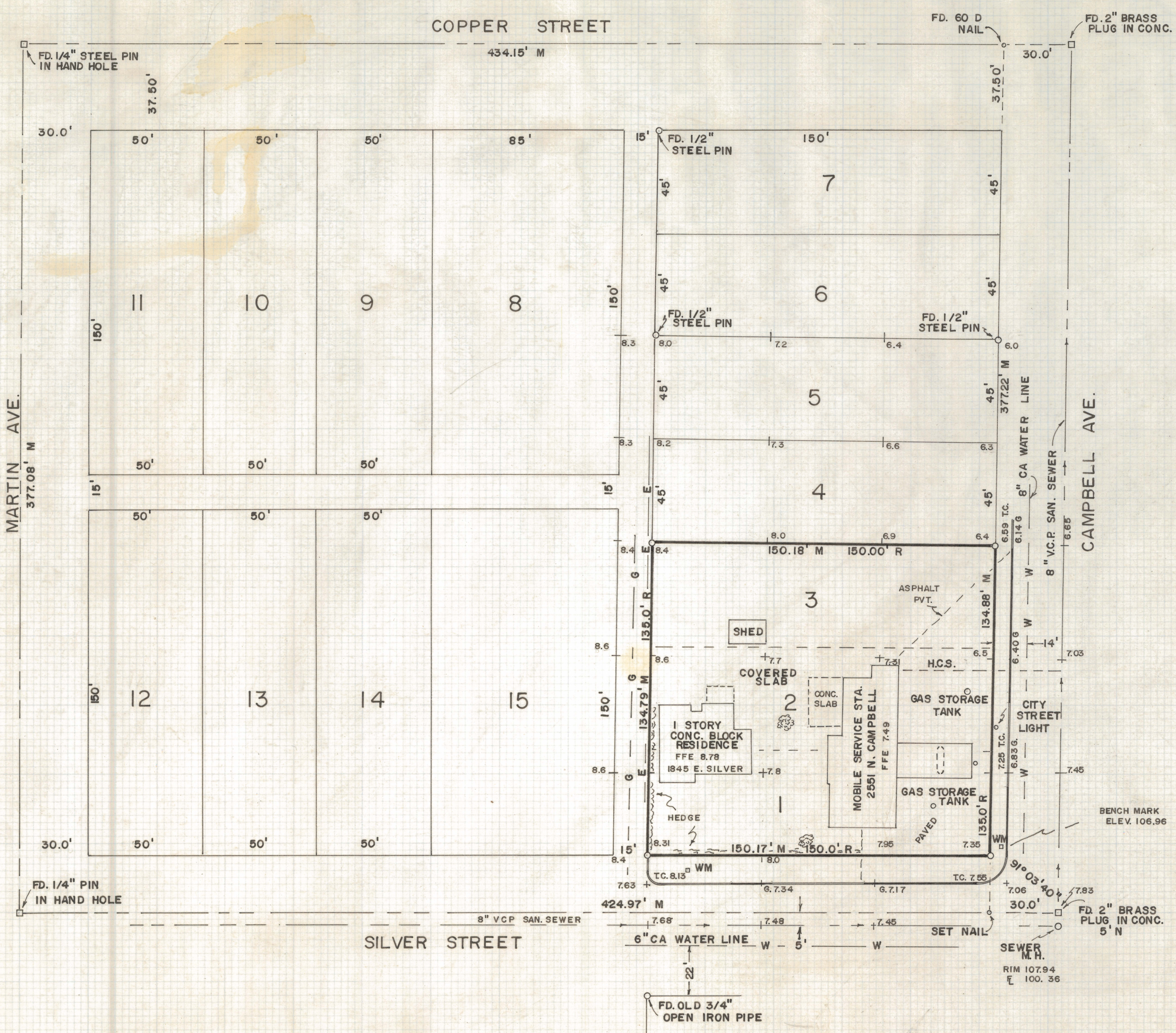
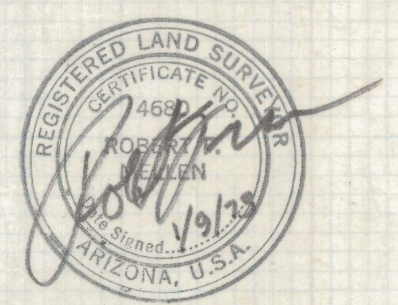


DISCLAIMER:

This unrecorded Record of Survey was donated to the City of Tucson. The City of Tucson provides this data for your personal use "as is." Additionally, the City of Tucson provides this information with the understanding that it is not guaranteed to be accurate, correct or complete and conclusions drawn from such information are the responsibility of the user.



RESULTS OF SURVEY OF

LOTS ONE, TWO AND THREE, BLOCK ONE OF JEFFERSON PARK ADDITION AS RECORDED IN BOOK FOUR OF MAPS AND PLATS AT PAGE SEVENTEEN IN THE OFFICE OF THE PIMA COUNTY RECORDER, PIMA COUNTY, ARIZONA

- NOTES**
- (1) INDICATES 5/8" AL. CAP PIN MKD. L.S. 4680
 - (2) W.M. - WATER METER
 - (3) SEWER FROM CITY OF TUCSON PLAN I-469 SHEET 4/4
 - (4) H.C.S. - HOUSE CONNECTION SEWER
 - (5) INDICATES CURB CUT
 - (6) UNDERGROUND UTILITES & TANKS NOT LOCATED
 - (7) NO EASEMENTS VISABLE ON PROPERTY
 - (8) -E- OVERHEAD ELECTRIC
 - (9) -G- 2" GAS LINE
 - (10) BENCH MARK
† ON EAST CENTER CONCRETE LAMP SERVICE STA. ELEV. 106.96 CITY OF TUCSON PLAN I-612
 - (11) INDICATES EUCALYPTUS OVER 2-1/2' DIAMETER
 - (12) HOUSE IS SERVED BY SAME SEWER (HCS) AS SERVICE STA.

ROBERT F. MELLEN
REGISTERED LAND SURVEYOR
TUCSON, ARIZONA

JOB # 73-4
REVISED 2/16/73 TOPO.