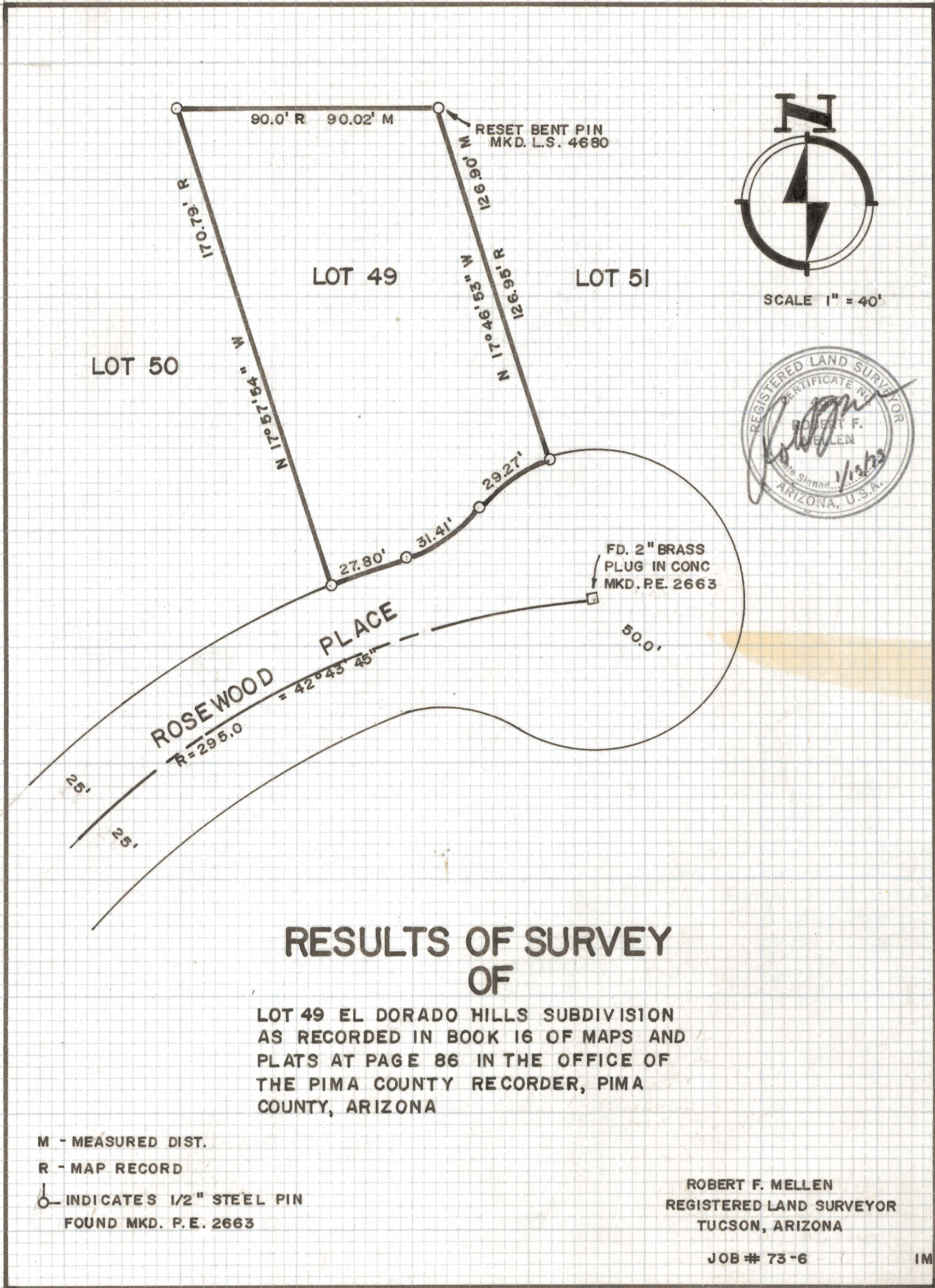


DISCLAIMER:

This unrecorded Record of Survey was donated to the City of Tucson. The City of Tucson provides this data for your personal use "as is." Additionally, the City of Tucson provides this information with the understanding that it is not guaranteed to be accurate, correct or complete and conclusions drawn from such information are the responsibility of the user.



SCALE 1" = 40'



RESULTS OF SURVEY OF

LOT 49 EL DORADO HILLS SUBDIVISION
 AS RECORDED IN BOOK 16 OF MAPS AND
 PLATS AT PAGE 86 IN THE OFFICE OF
 THE PIMA COUNTY RECORDER, PIMA
 COUNTY, ARIZONA

M - MEASURED DIST.

R - MAP RECORD

○ INDICATES 1/2" STEEL PIN
 FOUND MKD. P.E. 2663

ROBERT F. MELLEN
 REGISTERED LAND SURVEYOR
 TUCSON, ARIZONA

JOB # 73-6

IM

Z-2020-177