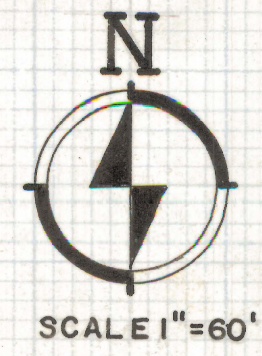
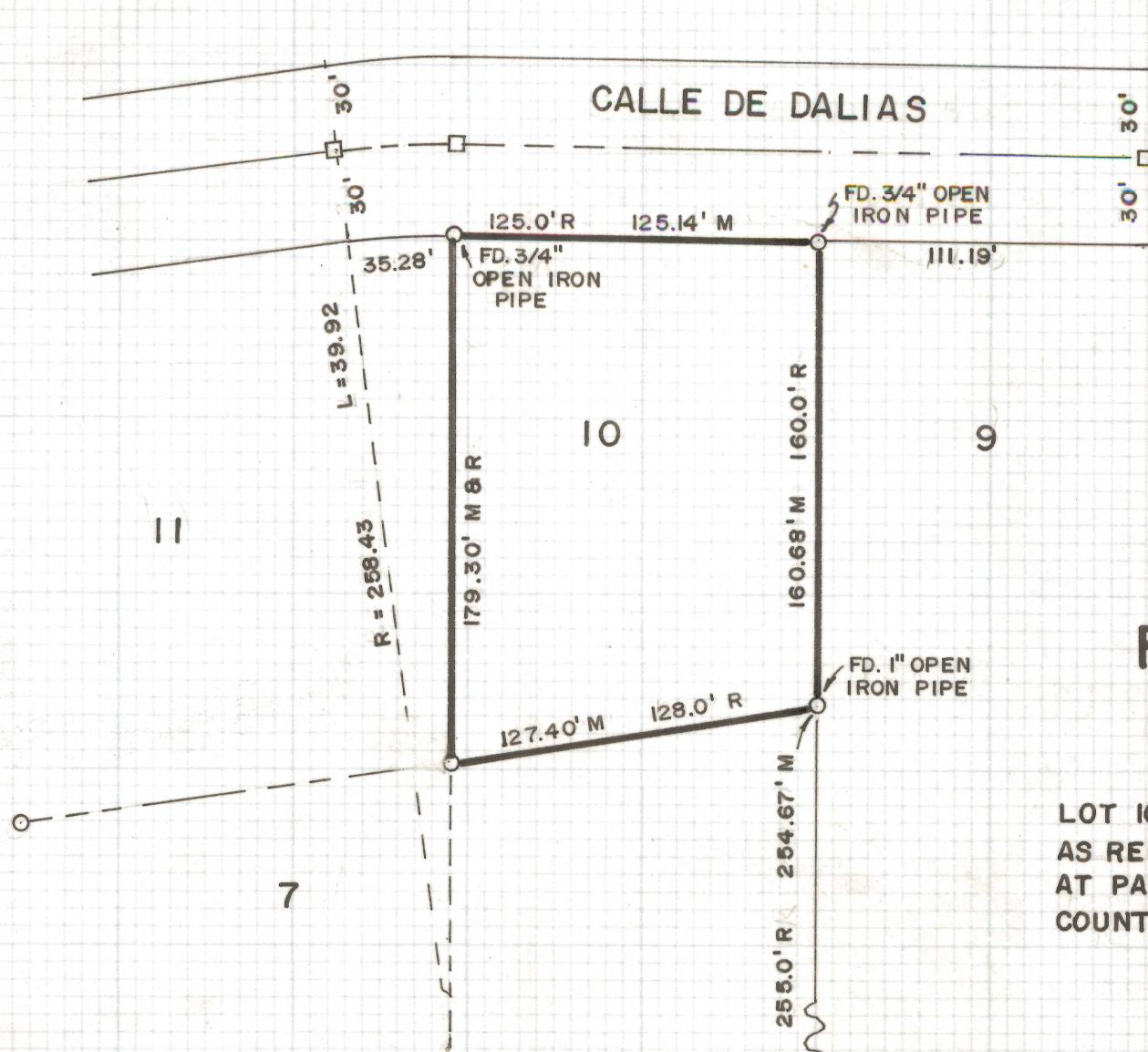


# **DISCLAIMER:**

**This unrecorded Record of Survey was donated to the City of Tucson. The City of Tucson provides this data for your personal use "as is." Additionally, the City of Tucson provides this information with the understanding that it is not guaranteed to be accurate, correct or complete and conclusions drawn from such information are the responsibility of the user.**



# RESULTS OF SURVEY OF

LOT 10 OF MIRAFLORES ESTATES SUBDIVISION  
AS RECORDED IN BOOK 12 OF MAPS AND PLATS  
AT PAGE 90 IN THE OFFICE OF THE PIMA  
COUNTY RECORDER, PIMA COUNTY, ARIZONA



ROBERT F. MELLE N  
REGISTERED LAND SURVEYOR  
TUCSON, ARIZONA  
JOB # 73-7

### NOTES

- R - MAP RECORD
- M - MEASURED DISTANCE
- INDICATES 5/8" AL. CAP PIN SET  
MKD. L.S. 4680 UNLESS NOTED
- FOUND 2" BRASS PLUG SET IN CONC.

Z-2020-178

3