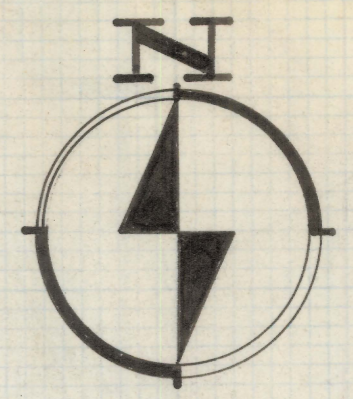
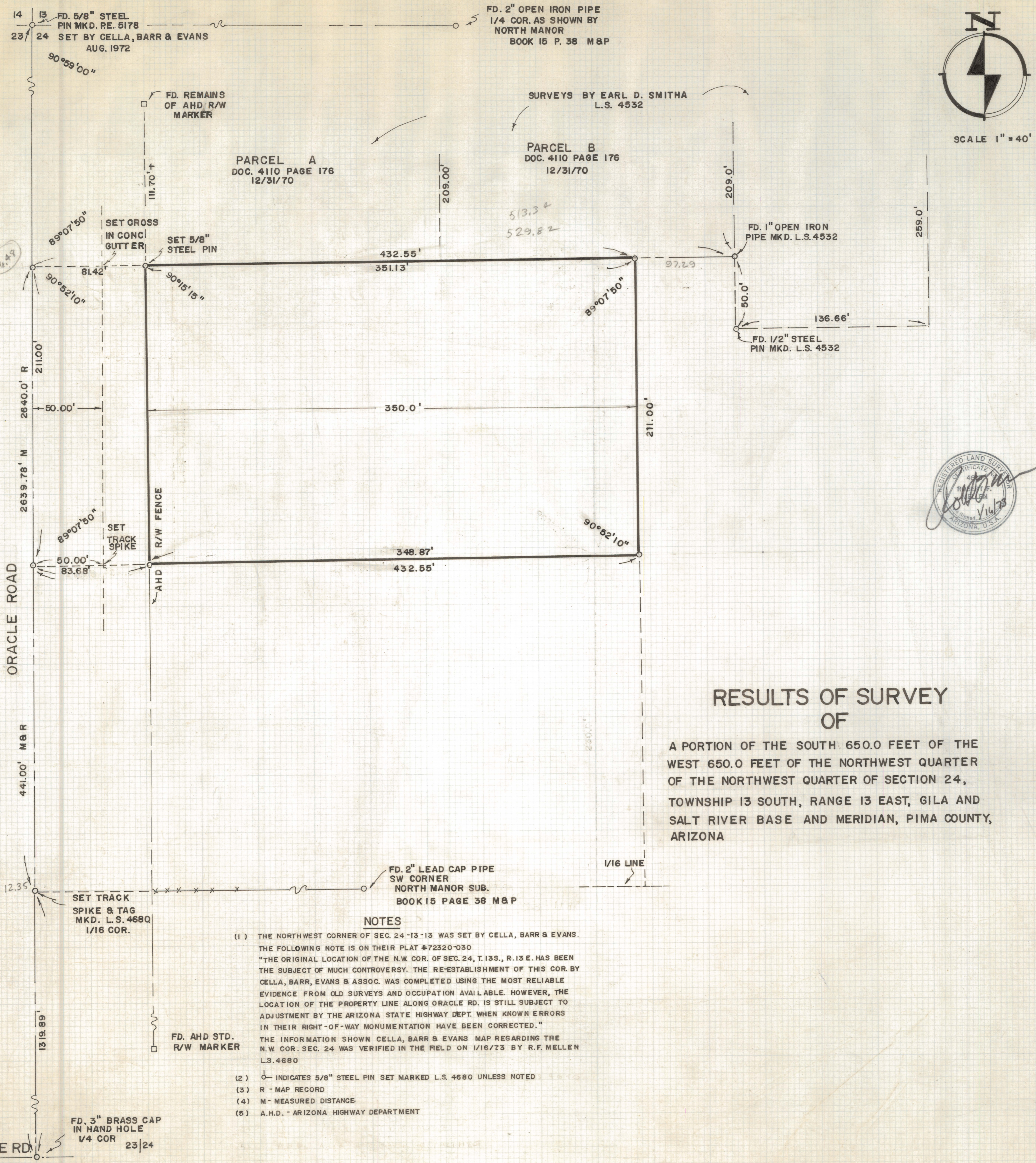
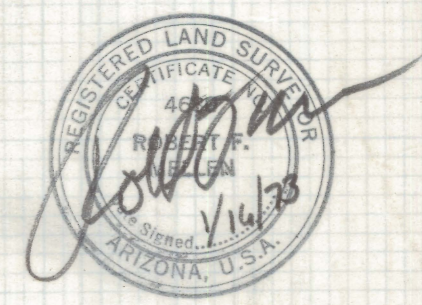


DISCLAIMER:

This unrecorded Record of Survey was donated to the City of Tucson. The City of Tucson provides this data for your personal use "as is." Additionally, the City of Tucson provides this information with the understanding that it is not guaranteed to be accurate, correct or complete and conclusions drawn from such information are the responsibility of the user.



SCALE 1" = 40'



RESULTS OF SURVEY OF

A PORTION OF THE SOUTH 650.0 FEET OF THE WEST 650.0 FEET OF THE NORTHWEST QUARTER OF THE NORTHWEST QUARTER OF SECTION 24, TOWNSHIP 13 SOUTH, RANGE 13 EAST, GILA AND SALT RIVER BASE AND MERIDIAN, PIMA COUNTY, ARIZONA

NOTES

- (1) THE NORTHWEST CORNER OF SEC. 24-13-13 WAS SET BY CELLA, BARR & EVANS. THE FOLLOWING NOTE IS ON THEIR PLAT #72320-030
"THE ORIGINAL LOCATION OF THE N.W. COR. OF SEC. 24, T.13S., R.13 E. HAS BEEN THE SUBJECT OF MUCH CONTROVERSY. THE RE-ESTABLISHMENT OF THIS COR. BY CELLA, BARR, EVANS & ASSOC. WAS COMPLETED USING THE MOST RELIABLE EVIDENCE FROM OLD SURVEYS AND OCCUPATION AVAILABLE. HOWEVER, THE LOCATION OF THE PROPERTY LINE ALONG ORACLE RD. IS STILL SUBJECT TO ADJUSTMENT BY THE ARIZONA STATE HIGHWAY DEPT. WHEN KNOWN ERRORS IN THEIR RIGHT-OF-WAY MONUMENTATION HAVE BEEN CORRECTED."
THE INFORMATION SHOWN CELLA, BARR & EVANS MAP REGARDING THE N.W. COR. SEC. 24 WAS VERIFIED IN THE FIELD ON 1/16/73 BY R.F. MELLEN L.S. 4680
- (2) ○ INDICATES 5/8" STEEL PIN SET MARKED L.S. 4680 UNLESS NOTED
- (3) R - MAP RECORD
- (4) M - MEASURED DISTANCE
- (5) A.H.D. - ARIZONA HIGHWAY DEPARTMENT

ROBERT F. MELLEN
REGISTERED LAND SURVEYOR
TUCSON, ARIZONA
REVISED 1/31/73 MOVE 30' EAST
JOB # 73-8