

# **DISCLAIMER:**

**This unrecorded Record of Survey was donated to the City of Tucson. The City of Tucson provides this data for your personal use "as is." Additionally, the City of Tucson provides this information with the understanding that it is not guaranteed to be accurate, correct or complete and conclusions drawn from such information are the responsibility of the user.**





SCALE 1" = 60'

# RESULTS OF SURVEY OF

LOT 21 AND THE WEST ONE HALF OF LOT 20 OF BUENA VENTURA SUBDIVISION AS RECORDED IN BOOK 13 OF MAPS AND PLATS AT PAGE 72 IN THE OFFICE OF THE PIMA COUNTY RECORDER, PIMA COUNTY, ARIZONA



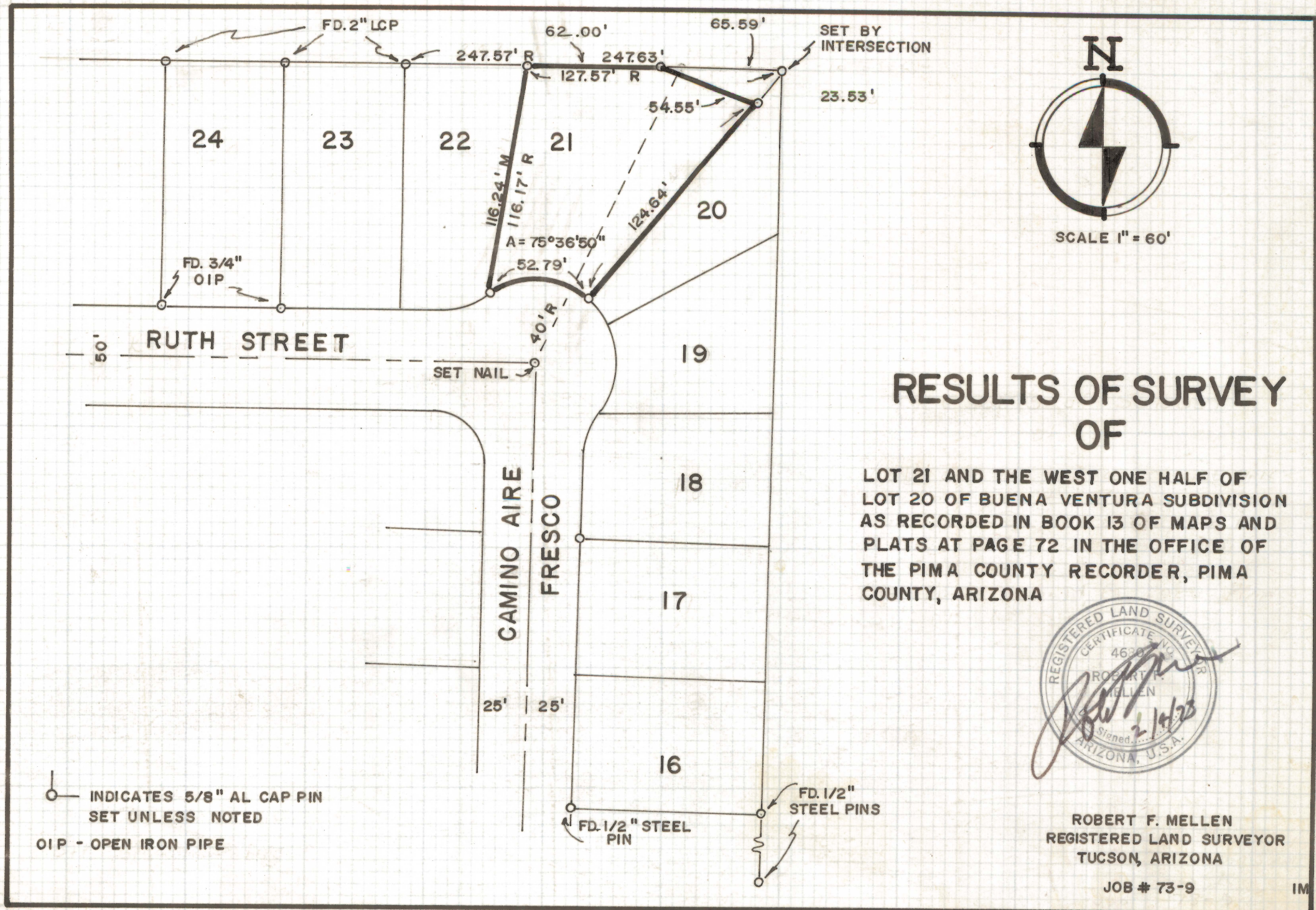
ROBERT F. MELLEN  
REGISTERED LAND SURVEYOR  
TUCSON, ARIZONA

JOB # 73-9

IM

Z-2020-180

2



○ INDICATES 5/8" AL CAP PIN SET UNLESS NOTED  
OIP - OPEN IRON PIPE

FD. 1/2" STEEL PINS  
FD. 1/2" STEEL PIN