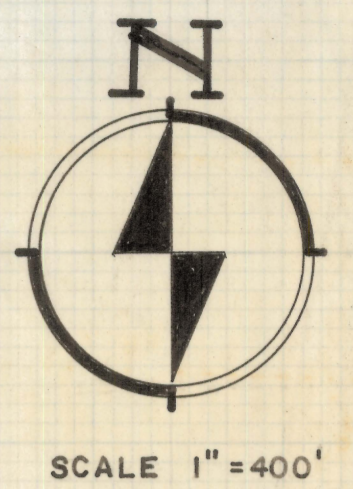
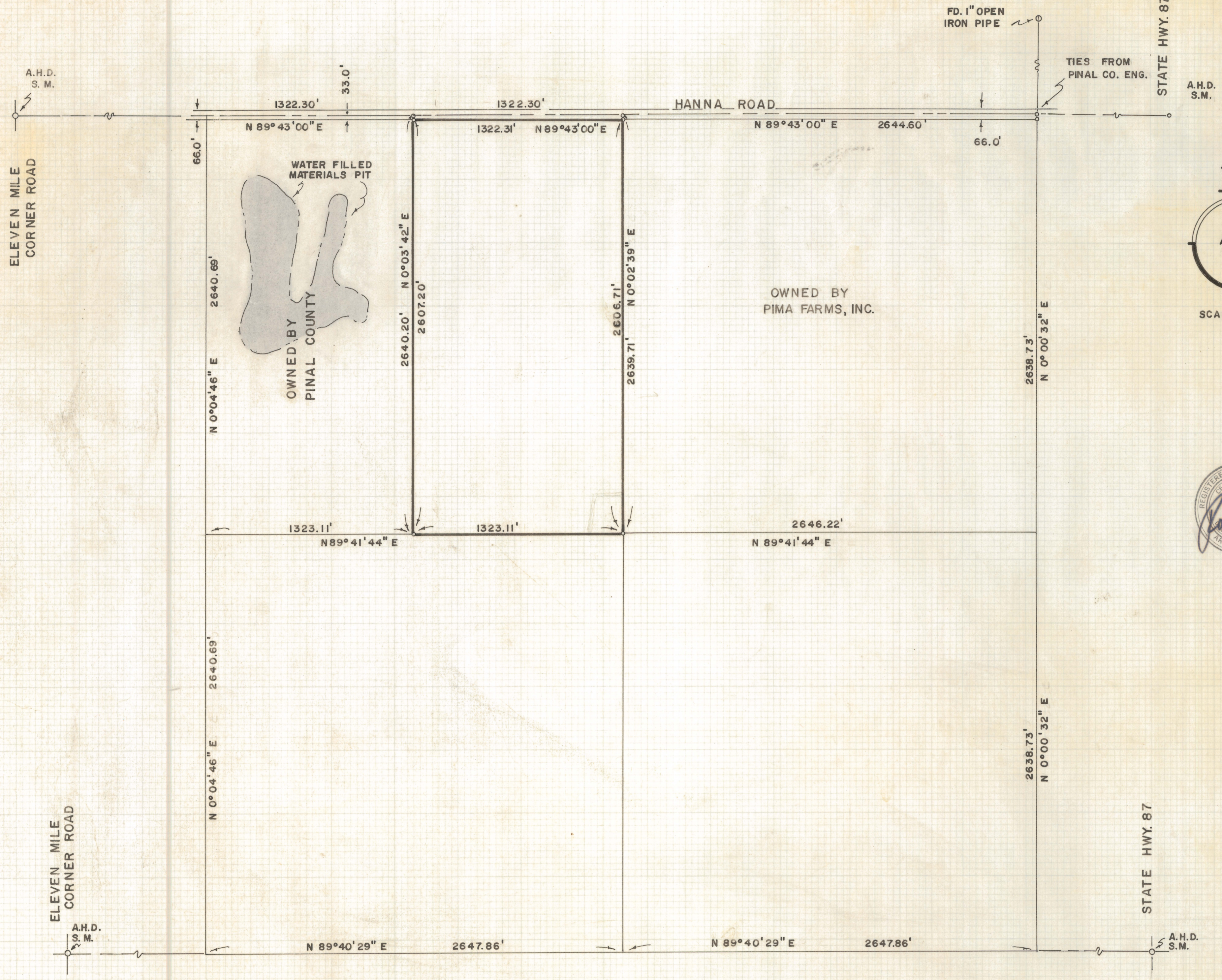


DISCLAIMER:

This unrecorded Record of Survey was donated to the City of Tucson. The City of Tucson provides this data for your personal use "as is." Additionally, the City of Tucson provides this information with the understanding that it is not guaranteed to be accurate, correct or complete and conclusions drawn from such information are the responsibility of the user.



**RESULTS OF SURVEY
OF**

THE EAST HALF OF THE NORTHWEST QUARTER OF SECTION SEVENTEEN, TOWNSHIP SEVEN SOUTH, OF RANGE EIGHT EAST, GILA AND SALT RIVER BASE AND MERIDIAN, PINAL COUNTY, ARIZONA

- NOTES
(1) INDICATES 5/8" STEEL PIN MKD. L.S. 4680 UNLESS NOTED

ROBERT F. MELLEN
REGISTERED LAND SURVEYOR
TUCSON, ARIZONA
JOB #73-71