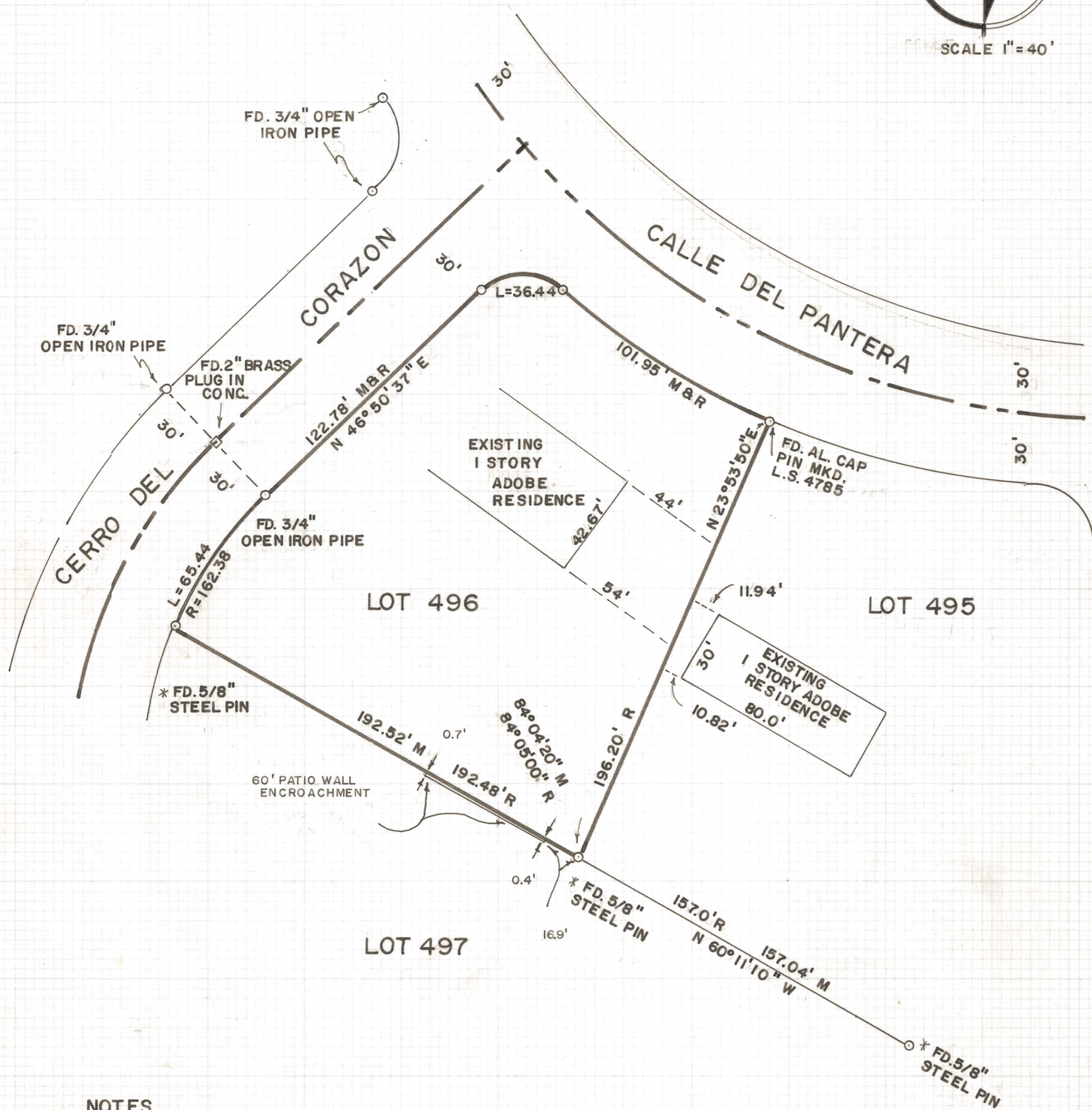
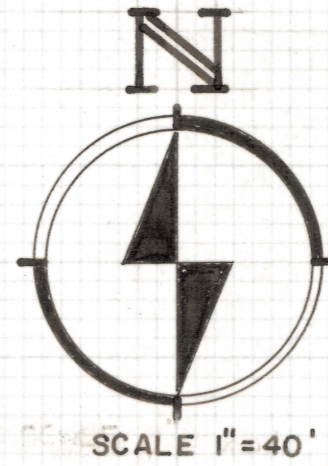


# **DISCLAIMER:**

**This unrecorded Record of Survey was donated to the City of Tucson. The City of Tucson provides this data for your personal use "as is." Additionally, the City of Tucson provides this information with the understanding that it is not guaranteed to be accurate, correct or complete and conclusions drawn from such information are the responsibility of the user.**





**RESULTS OF SURVEY OF**

**LOT 496 OF FLECHA CAIDA RANCH ESTATES #9 AS RECORDED IN BOOK 14 OF MAPS AND PLATS AT PAGE 44 IN THE OFFICE OF THE PIMA COUNTY RECORDER, PIMA COUNTY, ARIZONA**

**NOTES**

- (1) INDICATES 5/8" STEEL PIN MKD. L.S. 4680 UNLESS NOTED
- (2) \* PINS SET BY THE ABOVE UNDER ANOTHER JOB NO.

ROBERT F. MELLEN  
REGISTERED LAND SURVEYOR  
TUCSON, ARIZONA  
JOB # 73-107

IM