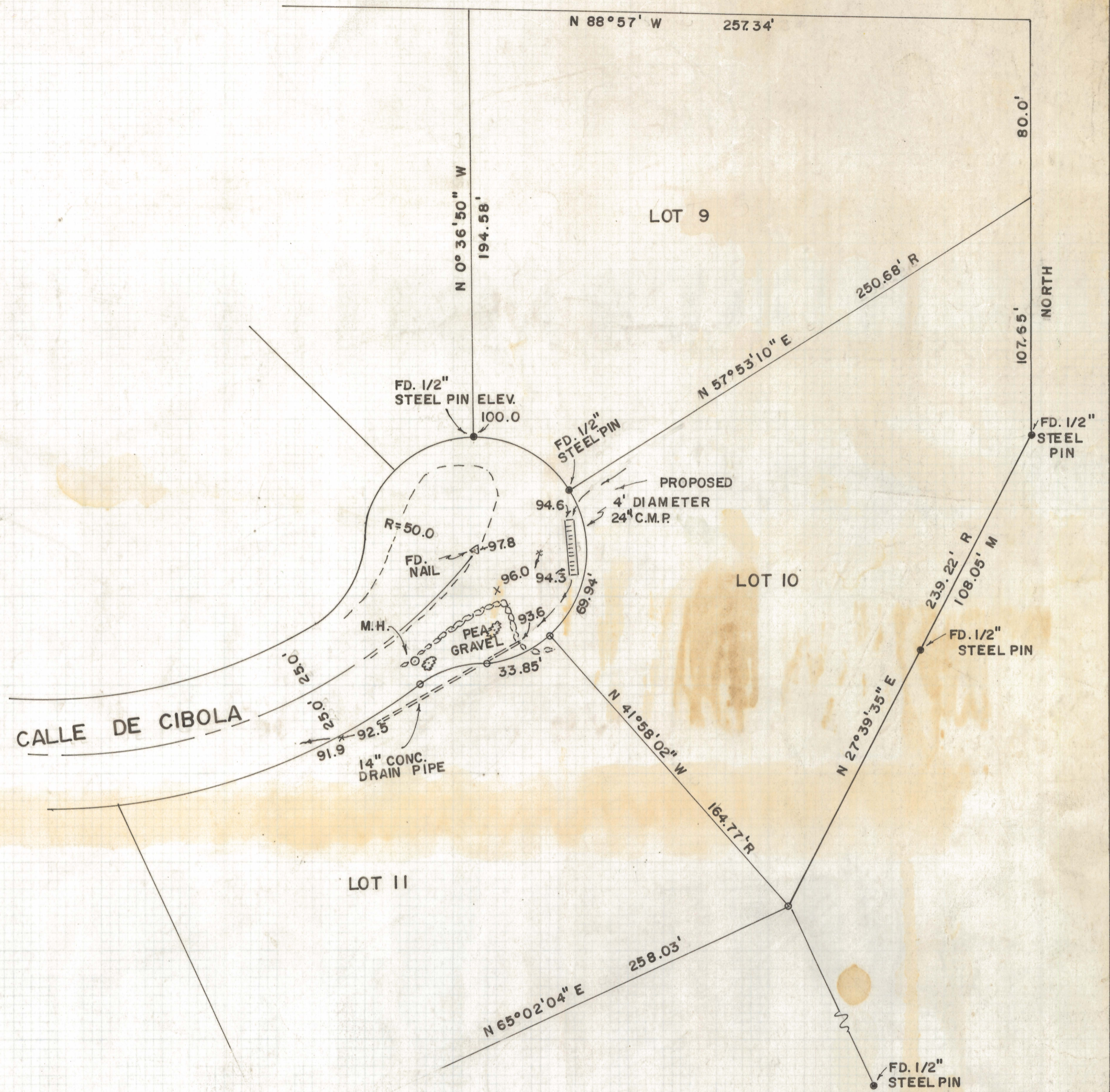
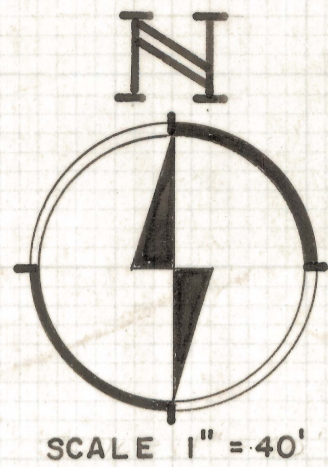


DISCLAIMER:

This unrecorded Record of Survey was donated to the City of Tucson. The City of Tucson provides this data for your personal use "as is." Additionally, the City of Tucson provides this information with the understanding that it is not guaranteed to be accurate, correct or complete and conclusions drawn from such information are the responsibility of the user.



NOTES

- (1) INDICATES 5/8" STEEL PIN MARKED L.S. 4680 UNLESS NOTED
- (2) PALM TREES (3)
- (3) ROCK OUTLINE LANDSCAPED AREA
- (4) X 93.4 RELATIVE ELEVATIONS
- (5) EXISTING PAVEMENT
- (6) R - RECORD
- (7) C.M.P. - CORRUGATED METAL PIPE

RESULTS OF SURVEY

OF PORTIONS OF LOTS 10 AND 11 OF SANTA CATALINA ESTATES SUBDIVISION AS RECORDED IN BOOK 15 OF MAPS AND PLATS AT PAGE 59 IN THE OFFICE OF THE PIMA COUNTY RECORDER, PIMA COUNTY, ARIZONA

ROBERT F. MELLEN
REGISTERED LAND SURVEYOR
TUCSON, ARIZONA

REVISED C.M.P. 12/2/73

JOB # 73-112

IM

Z-2020-189

2