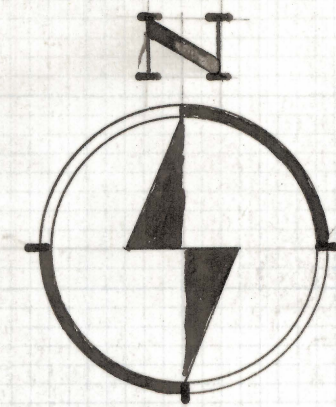
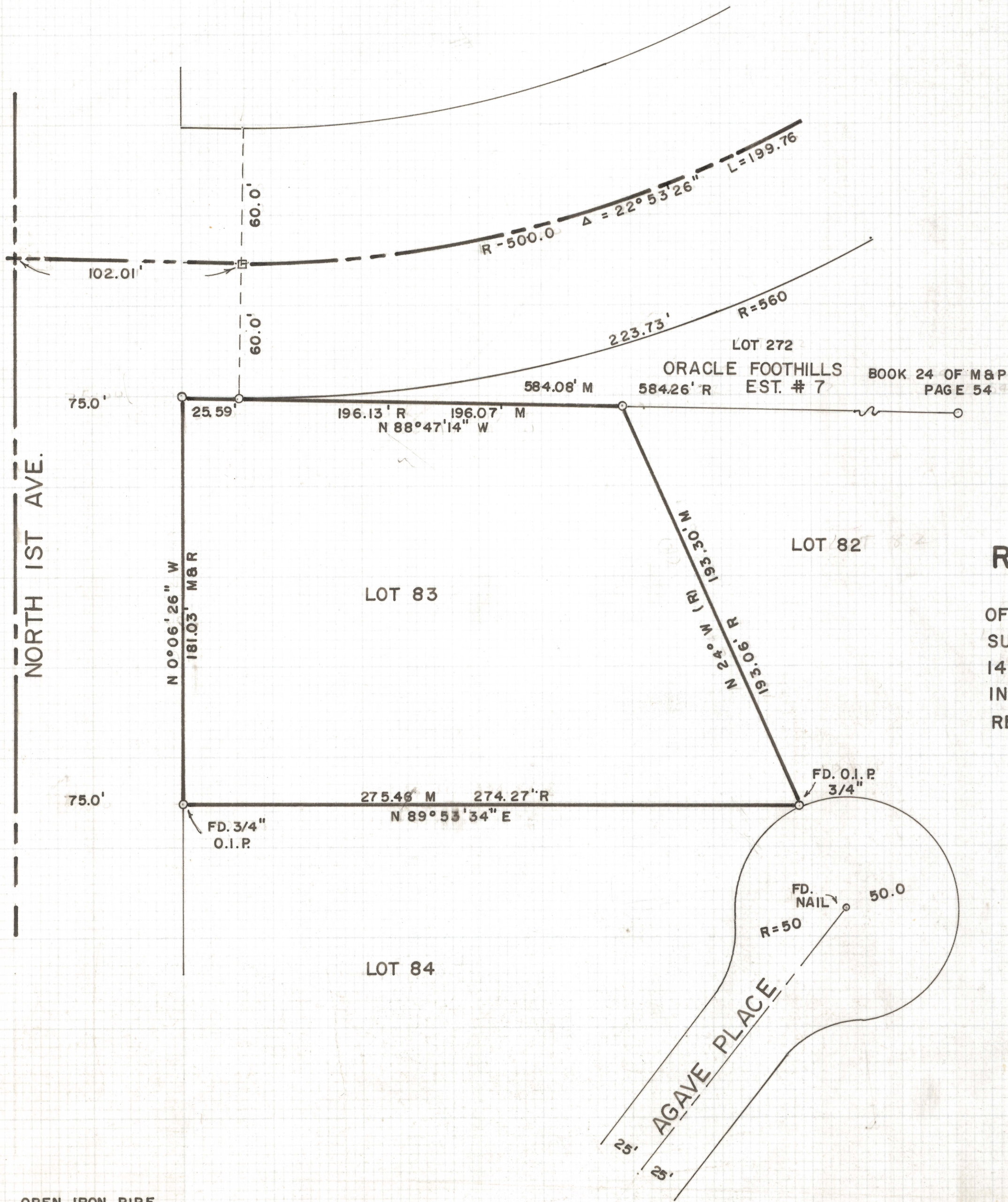
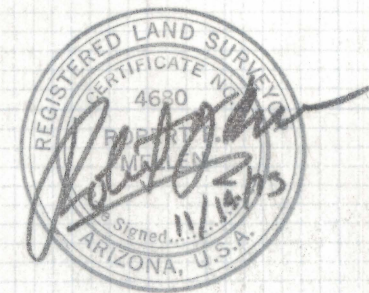


DISCLAIMER:

This unrecorded Record of Survey was donated to the City of Tucson. The City of Tucson provides this data for your personal use "as is." Additionally, the City of Tucson provides this information with the understanding that it is not guaranteed to be accurate, correct or complete and conclusions drawn from such information are the responsibility of the user.



SCALE 1" = 40'



RESULTS OF SURVEY

OF LOT 83 OF NORTHRIDGE ESTATES SUBDIVISION AS RECORDED IN BOOK 14 OF MAPS AND PLATS AT PAGE 14 IN THE OFFICE OF THE PIMA COUNTY RECORDER, PIMA COUNTY, ARIZONA

NOTE

- (1) O.I.P. OPEN IRON PIPE
- (2) M - MEASURED
- (3) R - MAP RECORD

ROBERT F. MELLEN
 REGISTERED LAND SURVEYOR
 TUCSON, ARIZONA
 JOB # 73-118

IM