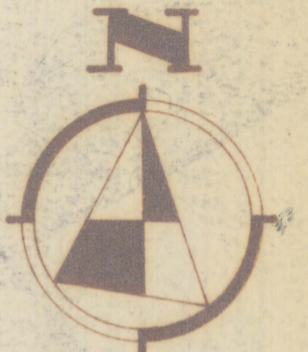
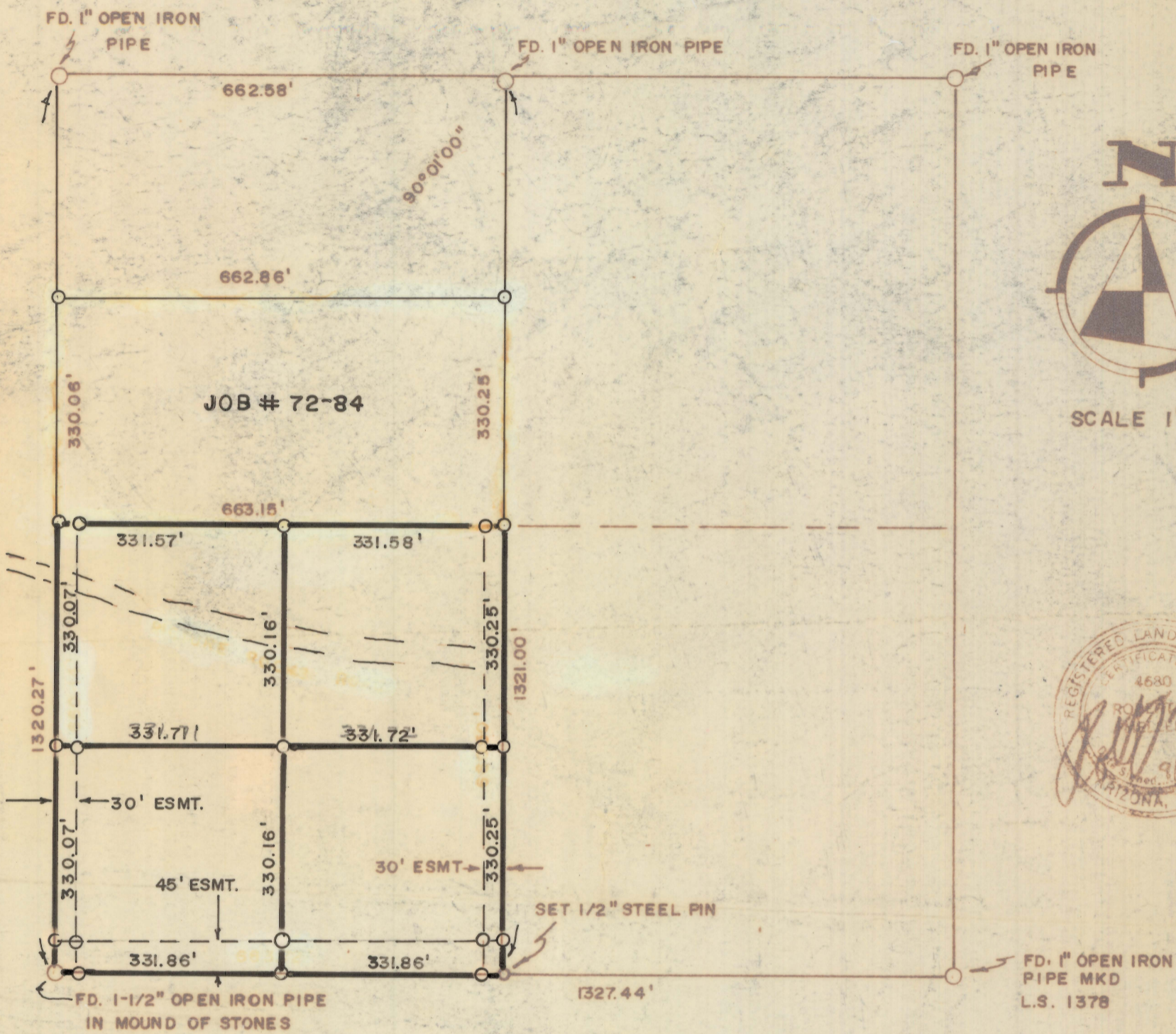


# **DISCLAIMER:**

**This unrecorded Record of Survey was donated to the City of Tucson. The City of Tucson provides this data for your personal use "as is." Additionally, the City of Tucson provides this information with the understanding that it is not guaranteed to be accurate, correct or complete and conclusions drawn from such information are the responsibility of the user.**



SCALE 1" = 200'



## RESULTS OF SURVEY OF

THE SOUTHWEST QUARTER OF THE SOUTH-  
EAST QUARTER OF THE NORTHWEST QUARTER  
OF SECTION 4, TOWNSHIP 13 SOUTH, RANGE  
11 EAST, GILA AND SALT RIVER BASE AND  
MERIDIAN, PIMA COUNTY, ARIZONA

**NOTES**

- SET AS PART OF JOB # 72-84
- INDICATES 1/2" STEEL PIN SET MKD. L.S. 4680

ROBERT F. MELLEN  
REGISTERED LAND SURVEYOR  
TUCSON, ARIZONA

JOB # 72-158  
REV. # 73-13

IM