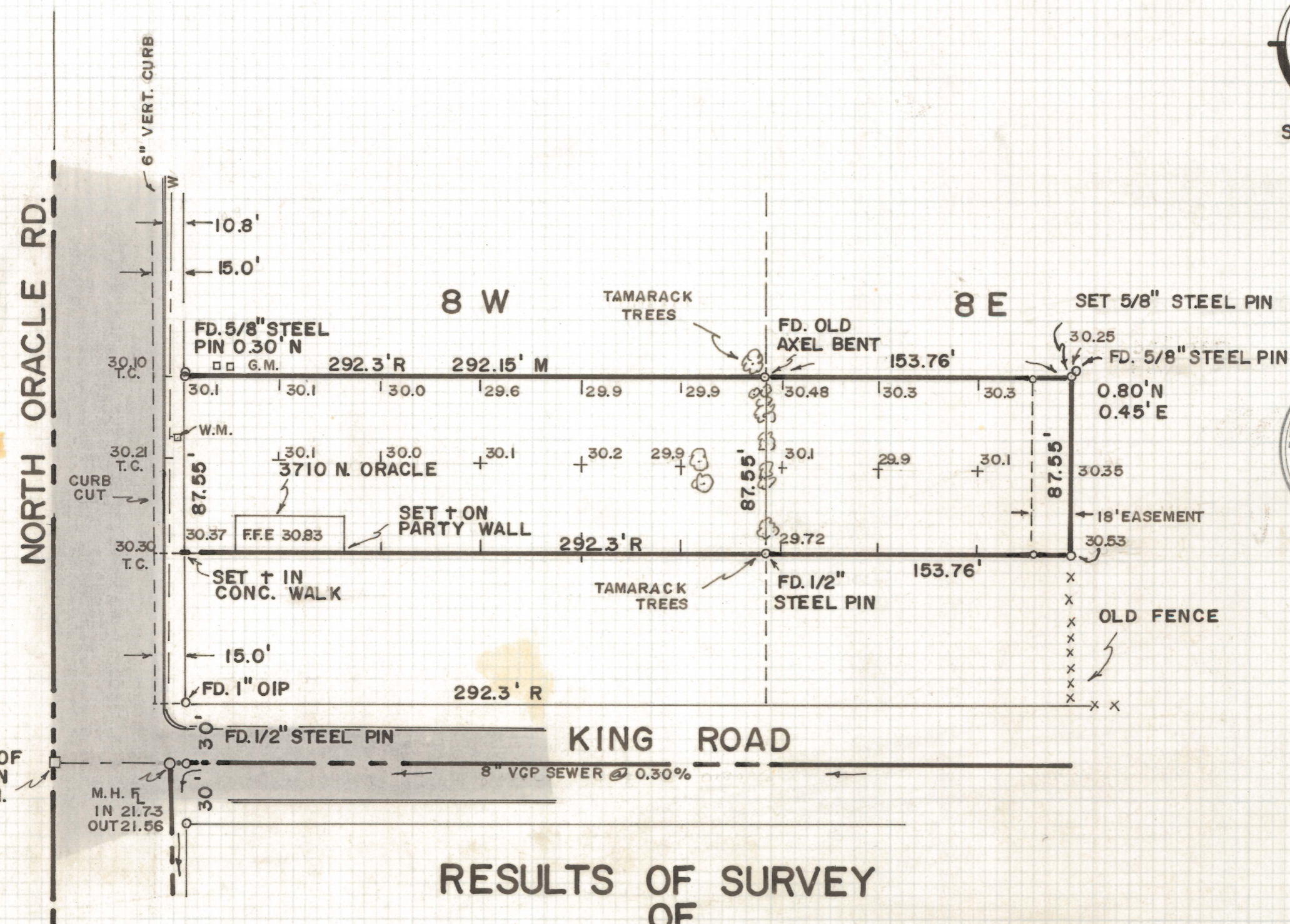


DISCLAIMER:

This unrecorded Record of Survey was donated to the City of Tucson. The City of Tucson provides this data for your personal use "as is." Additionally, the City of Tucson provides this information with the understanding that it is not guaranteed to be accurate, correct or complete and conclusions drawn from such information are the responsibility of the user.



RESULTS OF SURVEY OF

PORTIONS OF THE NORTH 87.55' OF THE SOUTH 162.55' OF LOT 8 EAST AND 8 WEST OF PASTIME ACRES RESUBDIVISION AS RECORDED IN BOOK 5 OF MAPS AND PLATS AT PAGE 37 IN THE OFFICE OF THE PIMA COUNTY RECORDER, PIMA COUNTY, ARIZONA

NOTES

- (1) OIP - OPEN IRON PIPE
- (2) INDICATES 5/8" STEEL PIN MKD. L.S. 4680 UNLESS NOTED
- (3) M - MEASURED DISTANCE
- (4) R - MAP RECORD
- (5) REVISED 6/13/73 TOPO & EASEMENT
- (6) BENCH MARK DATUM CITY OF TUCSON
- (7) W.M. - WATER METER G.M. - GAS METER

ROBERT F. MELLEEN
 REGISTERED LAND SURVEYOR
 TUCSON, ARIZONA
 JOB # 73-18

Z-2020-193

IM

CLEARPRINT