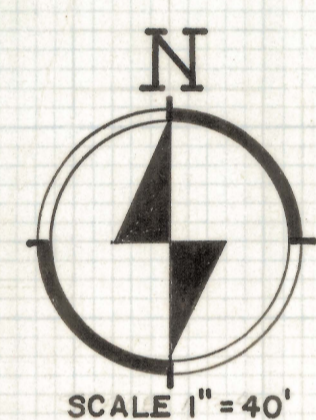
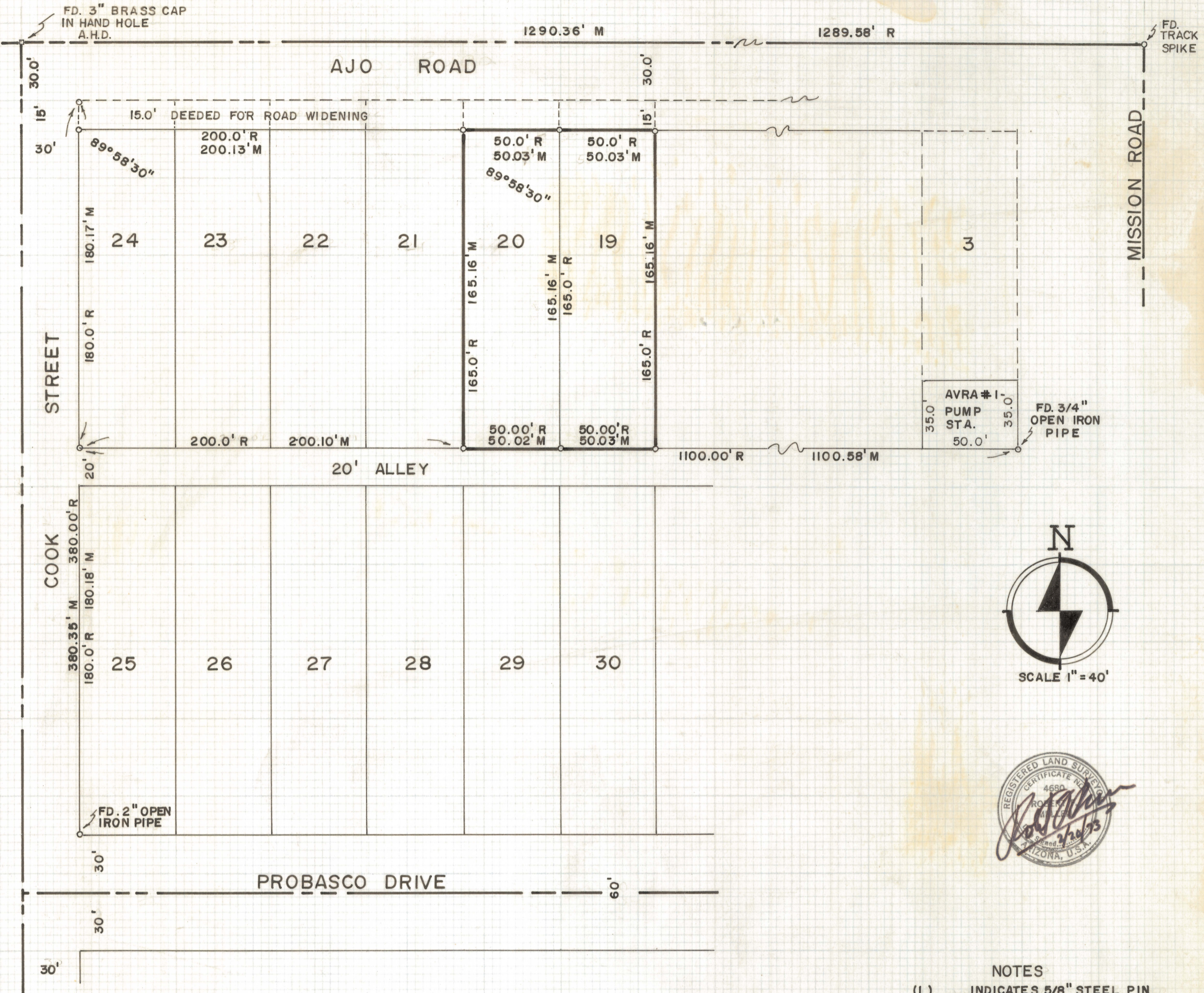


DISCLAIMER:

This unrecorded Record of Survey was donated to the City of Tucson. The City of Tucson provides this data for your personal use "as is." Additionally, the City of Tucson provides this information with the understanding that it is not guaranteed to be accurate, correct or complete and conclusions drawn from such information are the responsibility of the user.



RESULTS OF SURVEY OF

LOTS 19 AND 20 OF PROBASCO ADDITION AS RECORDED
IN BOOK SIX OF MAPS AND PLATS AT PAGE FORTY -
TWO IN THE OFFICE OF THE PIMA COUNTY RECORDER,
PIMA COUNTY, ARIZONA

- NOTES**
- (1) INDICATES 5/8" STEEL PIN
MKD. 4680 UNLESS NOTED
 - (2) R - MAP RECORD
 - (3) M - MEASURED DISTANCE OR
ANGLE

ROBERT F. MELLEN
REGISTERED LAND SURVEYOR
TUCSON, ARIZONA
JOB # 73-24

Z-2020-195

IM